

*kadaster*



# Dutch One-portal: combined information exchange underground utilities

conference-session: Extending INSPIRE  
Wednesday, September 28 2016

**Caroline Groot/Fuat Akdeniz**  
Cadastre, Land Registry and Mapping Agency

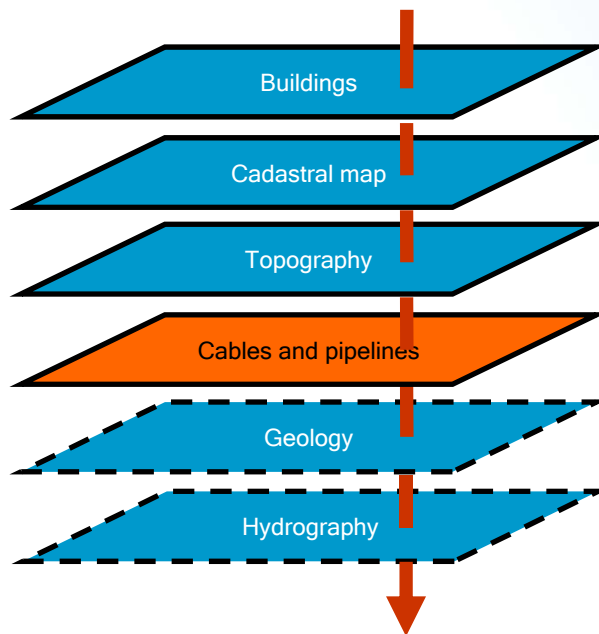
*kadaster*

# Role of the Kadaster in the Netherlands: Land registers and national facilities

- Cadastre
- Topography
- Cables and pipelines (KLIC)
- Addresses/Buildings
- Spatial planning
- Property Values



# What about INSPIRE utility services?



**Leiding**  
Thermisch - NietVanToepassing

geldig vanaf 01/01/2001

**Risicovol**  
Nauwkeurigheid ligging: Tot 30cm  
Waarschuwingsmechanisme: Net

Type: HeatingSteam Distributie  
Kleur: grijs

Diameter: Ø 8 cm  
Maximale druk: 3.5 bar

**Disclaimer**

Contact: text  
☎ text  
✉ text

**Bij noodgeval: ☎ 00.000 00 00**

gepland



# Information-exchange of underground networks

- Dedicated portal since 2010
- Limited purpose: **information exchange** between the ‘excavator’ and the cable- or pipeline company
- To **prevent damage**

Act: WION (2008)

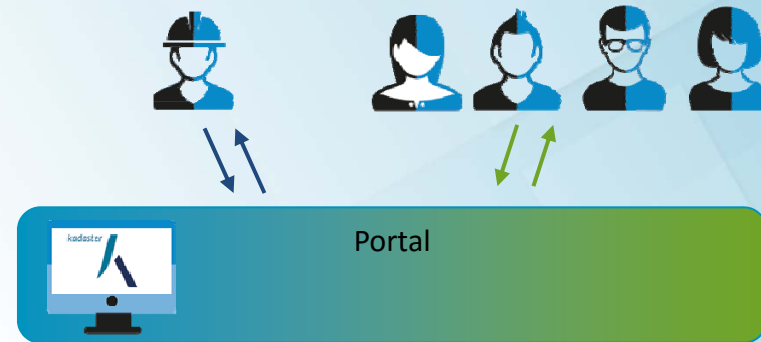


kuuaster

## The next step: Combining two tasks

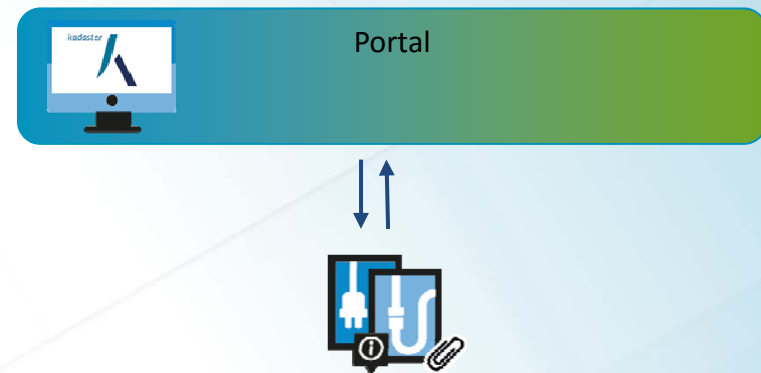
### One portal

US client  
Excavator  
Network company



### Extended information model

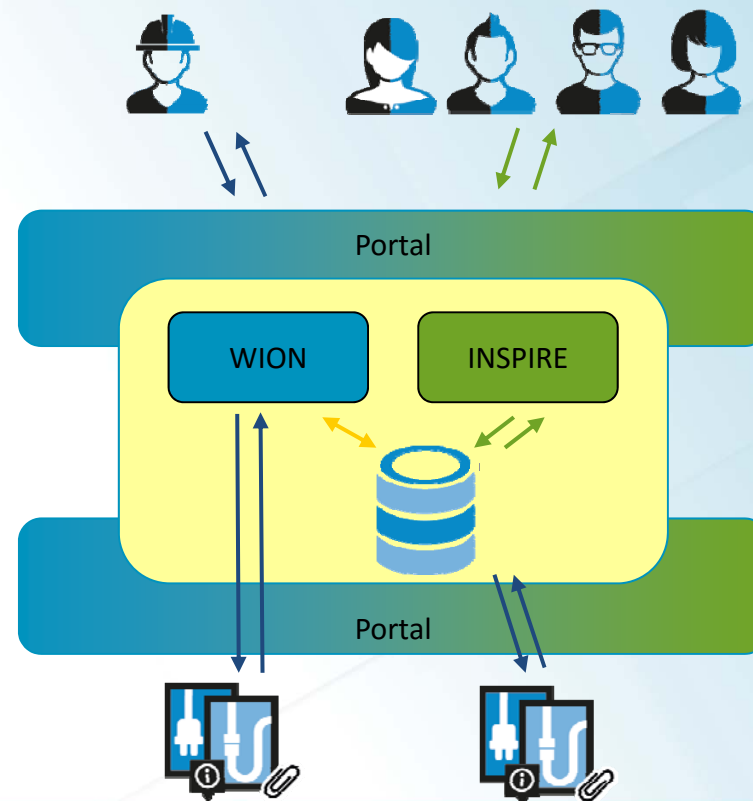
INSPIRE Utility Services  
Cable & pipeline



# Architecture

Shared requirements:

- AAA
- Maximum area per request/restricted area's
- Web services
- Exchange model



# Important conditions for successful implementation

- Cooperation sector-wide
- Legislation
- Governance
- Business model
- Standards (information models, services)



# Questions

E: [Klic-win@kadaster.nl](mailto:Klic-win@kadaster.nl)

Caroline Groot

E: [caroline.groot@kadaster.nl](mailto:caroline.groot@kadaster.nl)

