

Christian Ansorge, 27th September 2016, Barcelona

Copernicus Land products on their way towards INSPIRE

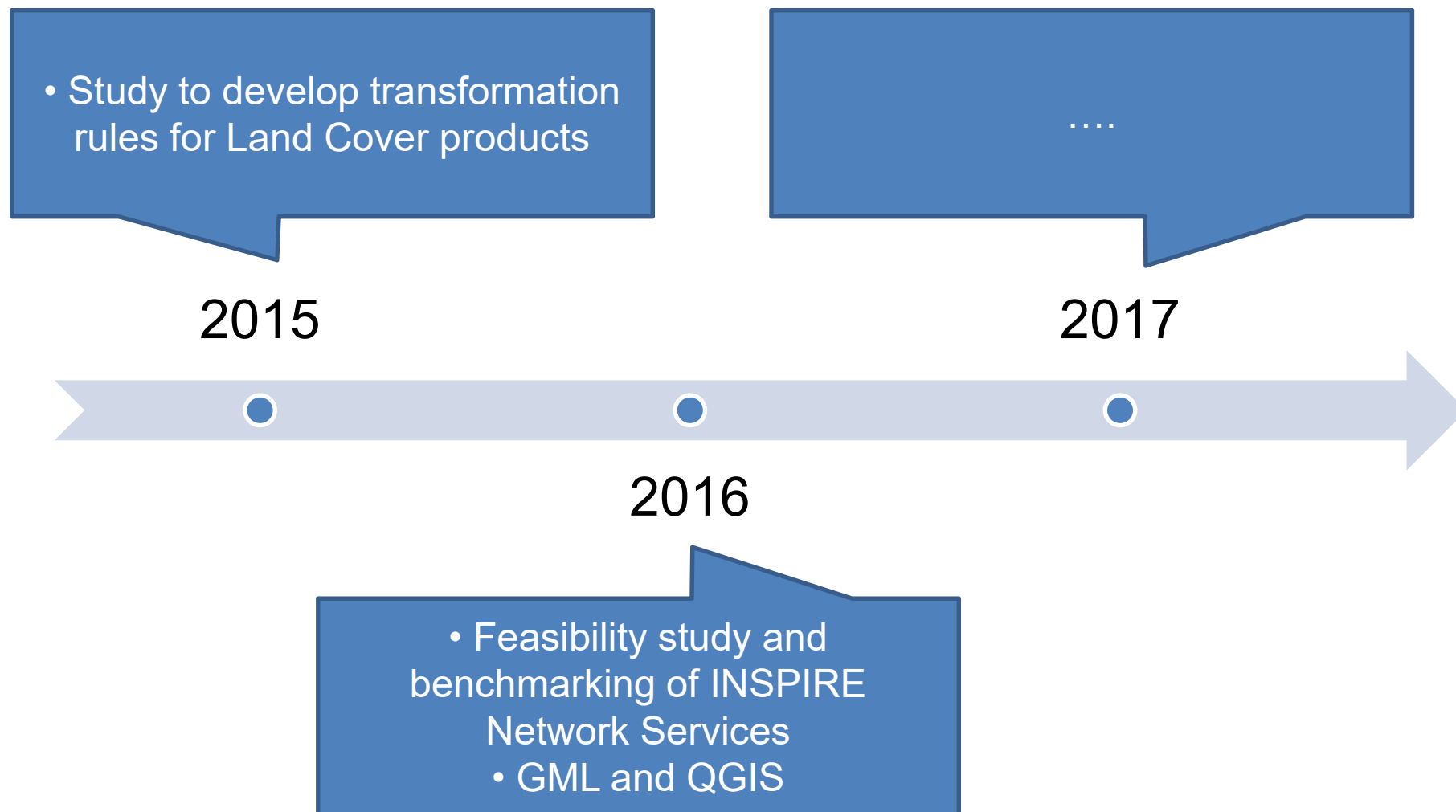
Copernicus Land products & INSPIRE

“Copernicus Land products on their way towards INSPIRE”

?

Yes .. they still are!

Copernicus Land products & INSPIRE



Copernicus Land products & INSPIRE

2015

<http://land.copernicus.eu/eagle/EAGLE-related-topics/inspire-related-work>

Copernicus Land Monitoring Services

Home Global Pan-European Local In-situ

You are here: Home / EAGLE / EAGLE-related topics / INSPIRE-related work

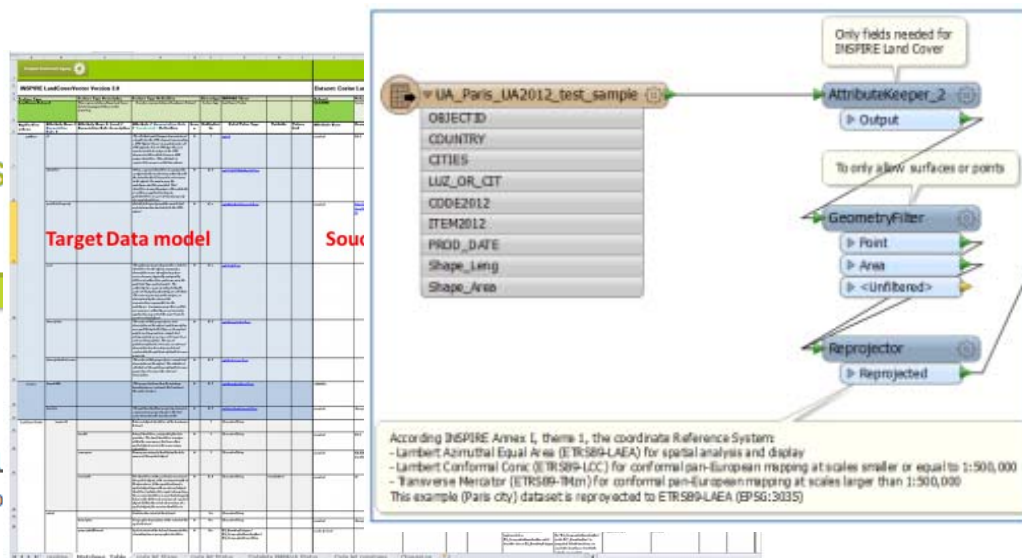
INSPIRE-related work

This page contains work results connected to the INSPIRE theme 'Land Cover'

INSPIRE transformation rules for CORINE Land Cover and Urban Atlas

- Transformation of CORINE Land Cover (CLC) and Urban Atlas (UA) data for INSPIRE Land Cover, executed by the EAGLE group
- Stepwise matching analysis between the source model schema of CLC / UA and the target model schema of the INSPIRE Land Cover specifications on Land Cover for each model element, documentation of this analysis with matching tables (Excel format)
- Results of model transformation in the form of GML-files for CLC and Urban Atlas for selected test sites.

Download here the [task report](#) and the above mentioned [matching tables](#), [GML-files](#) and [validation file](#) for CORINE Land Cover and Urban Atlas (zip format).



Copernicus Land products & INSPIRE

2016

- #1 Feasibility study and benchmarking of INSPIRE Network Services
- #2 INSPIRE GML support in OGR & QGIS

Copernicus Land products & INSPIRE

Feasibility study and benchmarking of INSPIRE Network Services

Scope:

assess to what extent the most used software tools are able to provide and consume INSPIRE conformant data through view and download services.

Actors:

KU Leuven, Epsilon Italia, WeTransform

Copernicus Land products & INSPIRE

Feasibility study and benchmarking of INSPIRE Network Services

View and Download service setup

	Deegree WMS/WFS	Geoserver WMS/WFS	ArcGIS for INSPIRE WMS/WFS
Corine Land Cover, Vector			
Biogeographical Regions, Vector			
CDDA (PS extended)			

Copernicus Land products & INSPIRE

Feasibility study and benchmarking of INSPIRE Network Services

- Thursday, 29th of September, 16:30 **”View and Download Services : Fit for purpose?”**
- <http://projects.eionet.europa.eu/eea-inspire-activities/library/2016-study-inspire-services>

Type	Title	Restrictions	Owner	Modification date and time	File size	Edit
	2016 INSPIRE Services BGR Deegree Geoserver	↓	Christian Ansoerqe	22/09/2016, 11:33	1 MB	
	2016 INSPIRE Services CDDA Deegree	↓	Christian Ansoerqe	22/09/2016, 11:34	1 MB	
	2016 INSPIRE Services CDDA Geoserver	↓	Christian Ansoerqe	22/09/2016, 12:10	762 KB	
	2016 INSPIRE Services CDDA dataTransformation	↓	Christian Ansoerqe	22/09/2016, 12:10	826 KB	



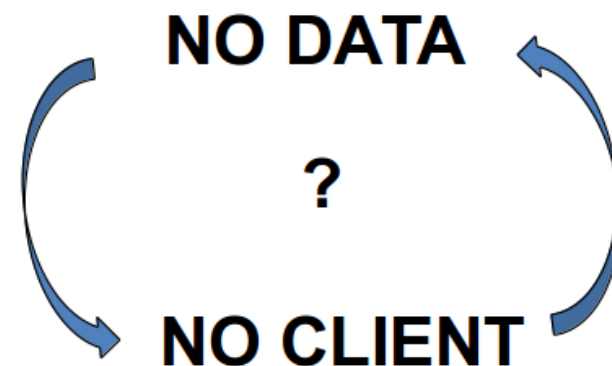
Copernicus Land products & INSPIRE

INSPIRE GML support in OGR & QGIS

- Support the development of QGIS plugin
- Consume complex feature GML as used for INSPIRE
- Copernicus funded activity

Actors:

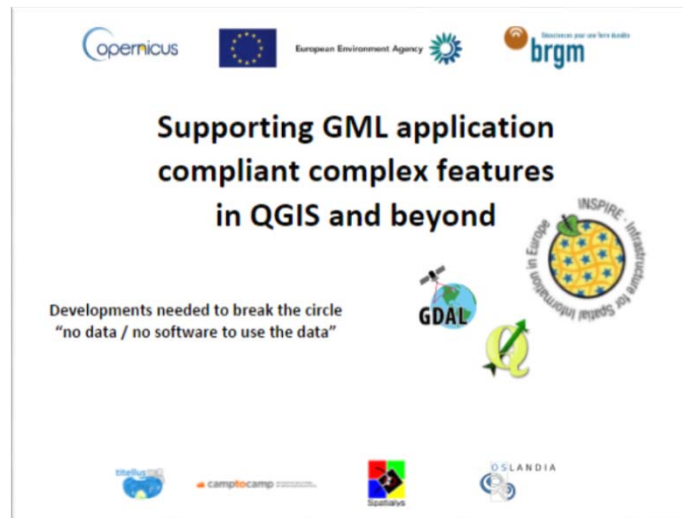
Titellus, BRGM



Copernicus Land products & INSPIRE

Feasibility study and benchmarking of INSPIRE Network Services

- Wednesday, 28th of September, 15:00,
”The consumption of INSPIRE harmonised data made easy with the QGIS GML Application Schema Toolbox”



Copernicus Land products & INSPIRE

2017

- Building on the WMS/WFS study
- Step by step with Corine Land Cover as starting point
- **Happy providers & Happy consumers 😊**

Copernicus Land products & INSPIRE

Thank you!

