

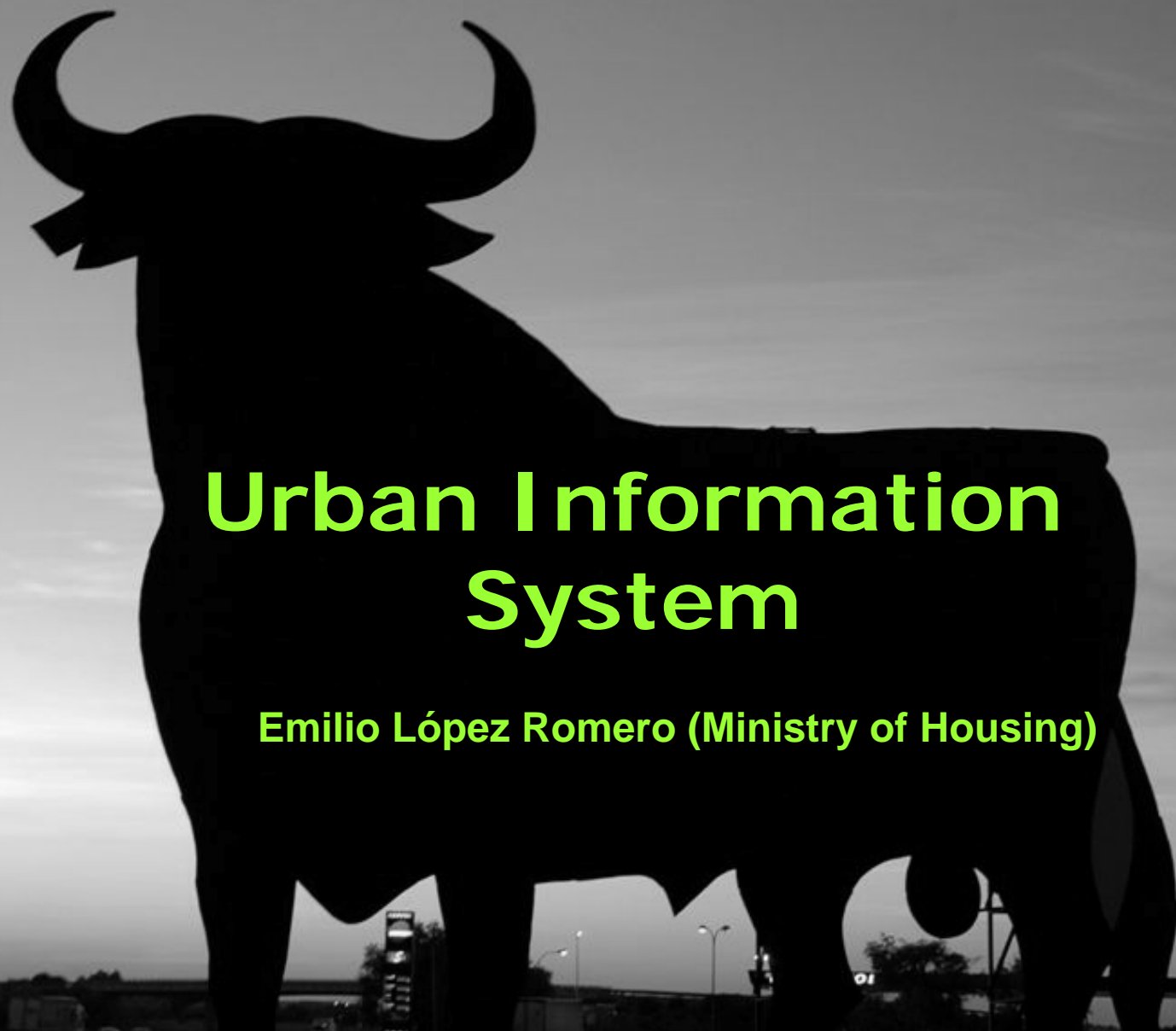


**GOBIERNO
DE ESPAÑA**

**MINISTERIO
DE VIVIENDA**

**SECRETARÍA GENERAL DE
VIVIENDA**

**DIRECCIÓN GENERAL DE
SUELO Y POLÍTICAS URBANAS**

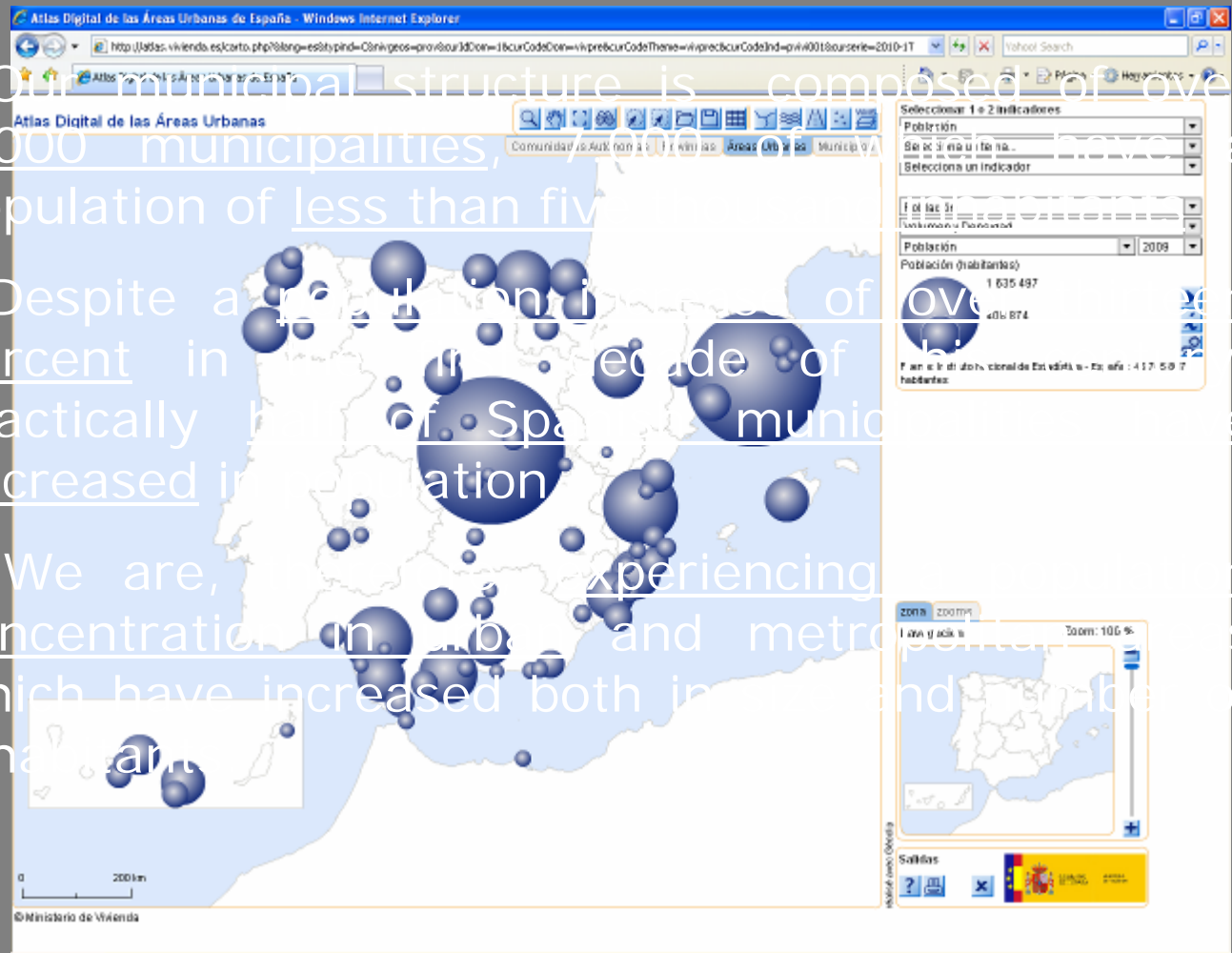


Urban Information System

Emilio López Romero (Ministry of Housing)

Spain (SIU viewpoint)

- Our municipal structure is composed of over 8.000 municipalities, 70% of which have a population of less than five thousand inhabitants.
- Despite a population increase of over 10 percent in the last decade of the 20th century, practically half of Spanish municipalities decreased in population.
- We are, therefore, experiencing a concentration in urban and metropolitan areas which have increased both in number and in inhabitants.



- ❑ More transparency on urban planning issues, by developing management tools aimed at private and public sector and citizens.
- ❑ Increasing knowledge about current urban planning.
- ❑ Increasing knowledge about available land and evolution of the land use.
- ❑ Offering information about supply and demand of housing and other uses.
- ❑ Compatibility with other national, regional and European information systems.

Spain

Objectives

Definition

Data sources

Working group

Data model

Urban SDI

Inspire

Definition

- ❑ A general and integrated public information system of information on land and urban planning (defined in the first additional provision of the Revised Text of the Land Act).
- ❑ In co-operation with the Autonomous Regions
- ❑ Assuring the compatibility and co-ordination with other information systems, in particular, with the Cadastre.

Data Sources

❑ CORINE LAND COVER and the SIOSE project.



❑ The municipal planning figures of the Ministry of Housing urban planning database.



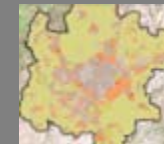
❑ The reference information, such as the aerial and satellite images of the Spanish National Plan for Territory Observation.



❑ The Natura 2000 network of biodiversity conservation areas in Spain.



❑ Land Classification and urban development areas from the Regional Departments in charge of Urban Planning



❑ And, finally, statistical information from the Spanish National Statistics Institute and the Directorate General for Cadastre



Working Group

□ There are members representing all public agent involved:

- National Level, AGE (Cadaastre, IGN, Red.es, M. of Housing)
- Autonomous Regions
- Spanish Federation of Municipalities and Provinces
- Other organizations (OSE, Land registry)

□ Two subgroups: Technological issues and Thematic issues



□ Land classification:

- Urban land (consolidated and non-consolidated)
- Developable land (sectorised and non-sectorised)
- Non-developable land
- Other



□ Developing areas:

- Non-Urbanized land
- Urbanized Land or in progress
- Built Land or in progress
- Consolidated Developing Area



□ Developing areas are analyzed in detail in order to add main urban planning parameters to the developing areas:

- General data of the developing areas
- Suitability for building by uses
- Number of housing

Spain

Objetives

Definition

Data sources

Working group

Data model

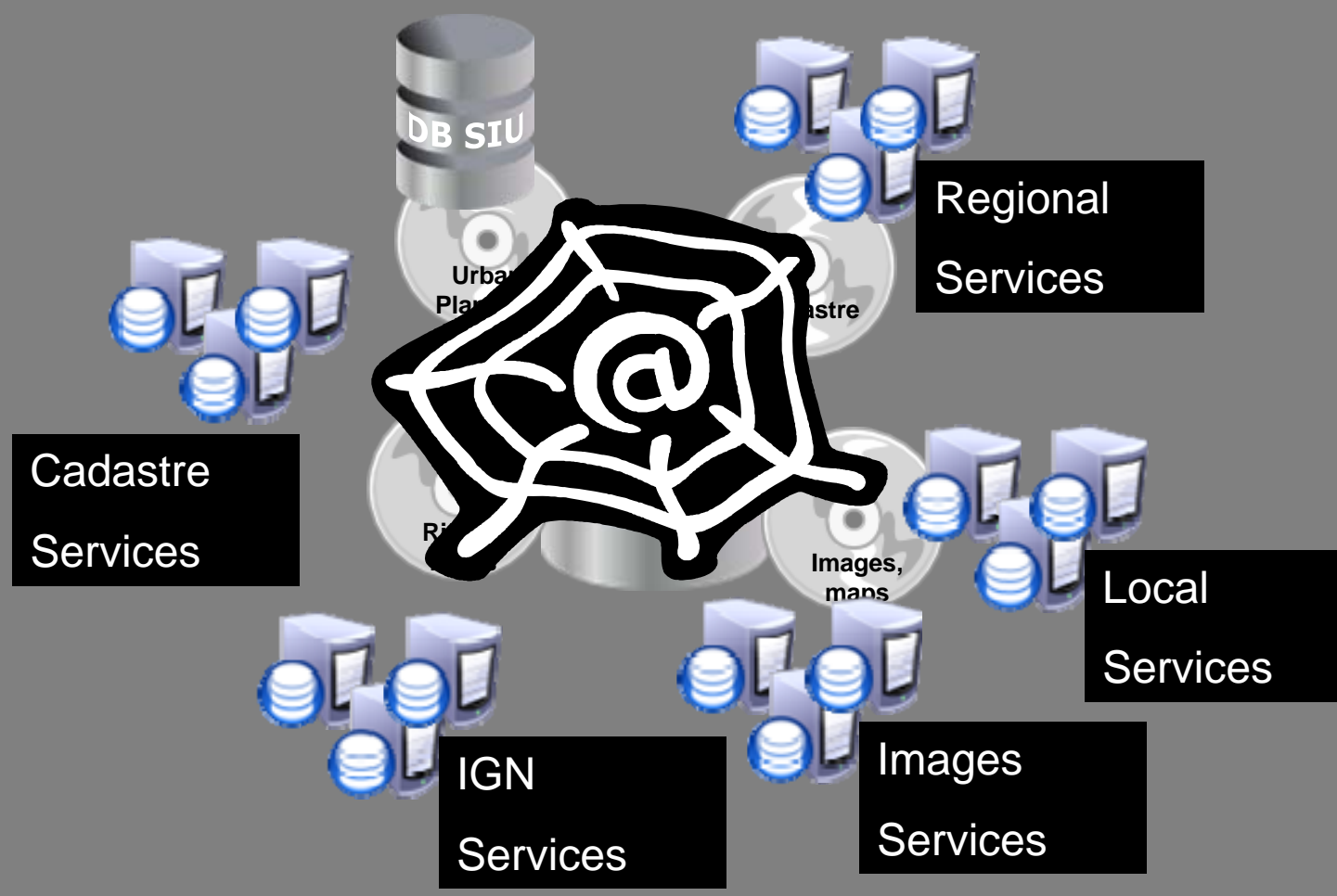
Urban SDI

Inspire

Urban Information System

Urban SDI

- Spain
- Objetives
- Definition
- Data sources
- Working group
- Data model
- Urban SDI
- Inspire



<http://siu.vivienda.es>

□ Ministry of Housing have promoted some changes in the Spanish regulation incorporation of the Inspire Directive, in order to include urban planning, land classification and developing areas.

□ Have been expanded two themes:

- Land use

- Area management/restriction/regulation zones and reporting units

□ Have been added a new theme:

- Urban



GOBIERNO
DE ESPAÑA

MINISTERIO
DE VIVIENDA

SECRETARÍA GENERAL DE
VIVIENDA

DIRECCIÓN GENERAL DE
SUELO Y POLÍTICAS URBANAS



Thank you

Don't forget to visit

<http://siu.vivienda.es/portal/index.php?lang=en>