



HLanData

HARMONIZATION OF EUROPEAN
LAND USE AND LAND COVER DATABASES
FOR THE CREATION OF VALUE ADDED SERVICES

Workshop: Land Cover/Land Use Data model commonalties. HLANDATA project user's perspective

Land Use

Isabel Goñi, TRACASA





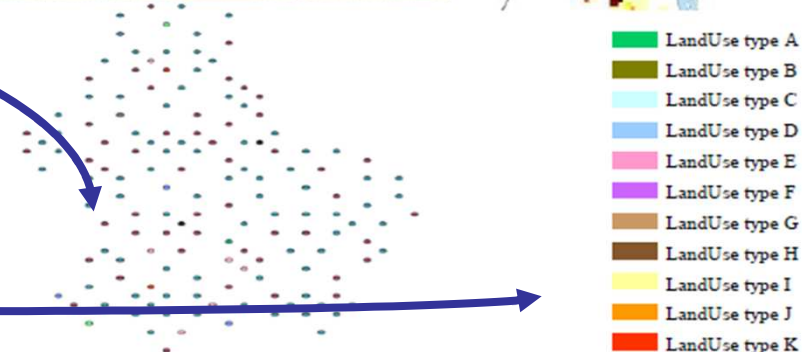
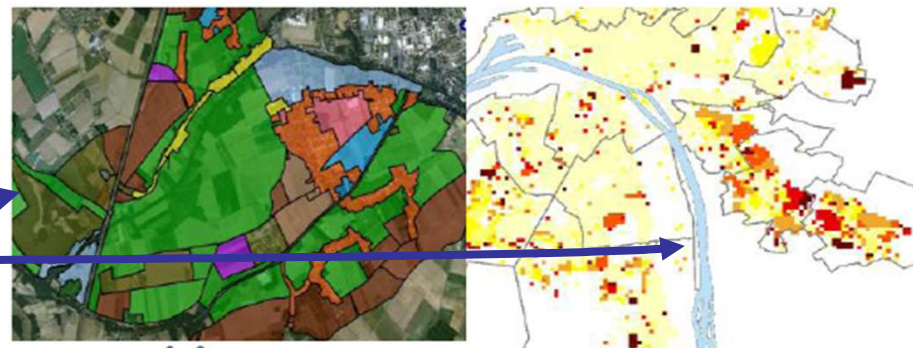
HLanData

Land Use (Annex III – 4)

- ✓ Territory characterised according to its current and future planned **functional dimension or socio-economic purpose** (e.g. residential, industrial, commercial, agricultural, forestry, recreational)
 - ▶ **ELU: Existing land use** (Current Land Use)
 - ▶ **PLU: Planned land use** (future planned Land Use)

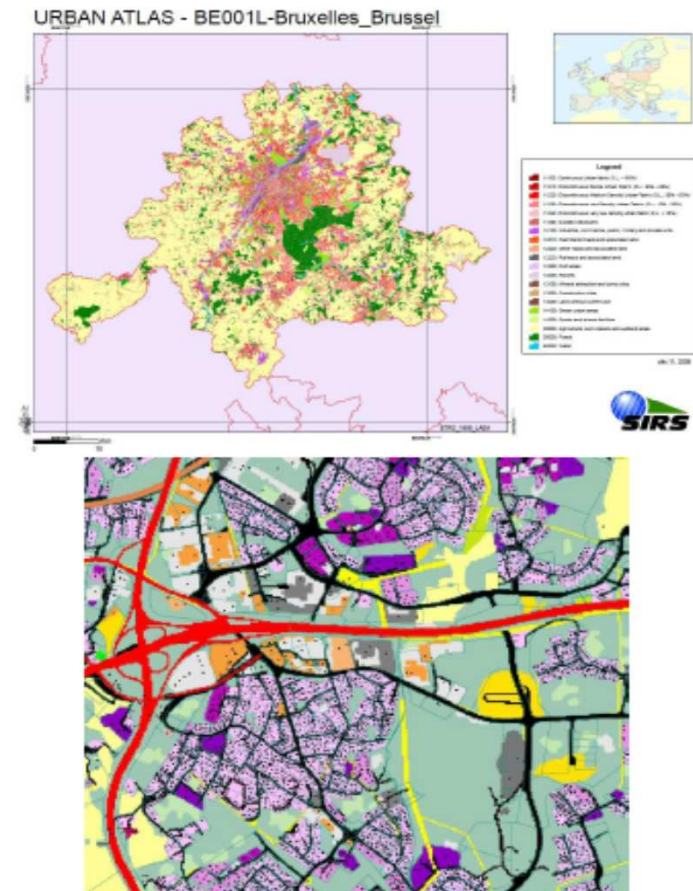


- ✓ CoreLandUseCoverage
- ✓ Composed of CoreLandUseObject
 - Polygons
 - Raster
 - Samples
- ✓ Two attributes from two classification systems
 - A European one:
dominantLandUse: HILUCSValue
 - A dataset dependant one:
specificLandUse:
LandUseClassificationValue (voidable)



- ✓ At the time of observation
- ✓ In most cases human activities on a homogeneous polygon includes the “infrastructures” necessary for the activity to take place
 - ▶ Dominant use
 - ▶ Secondary use
- ✓ Concept of minimum unit of interest

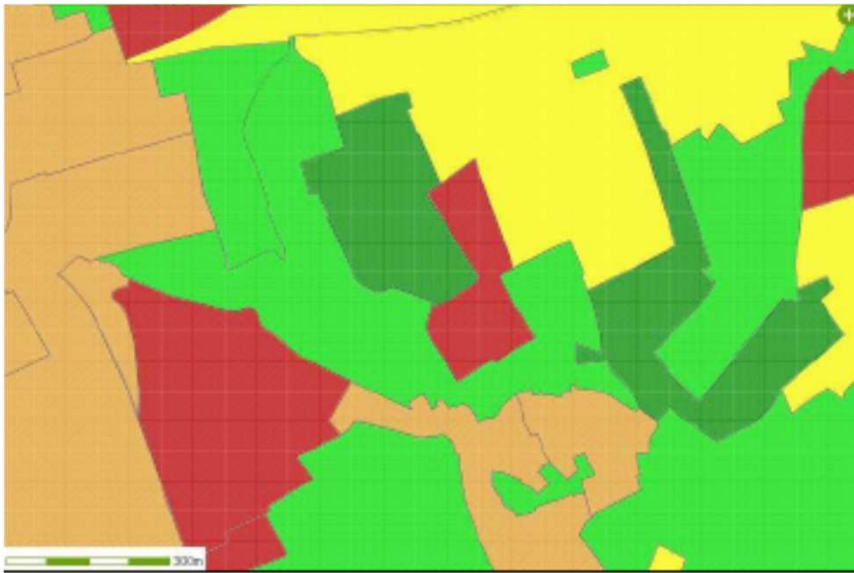
Existing Land use





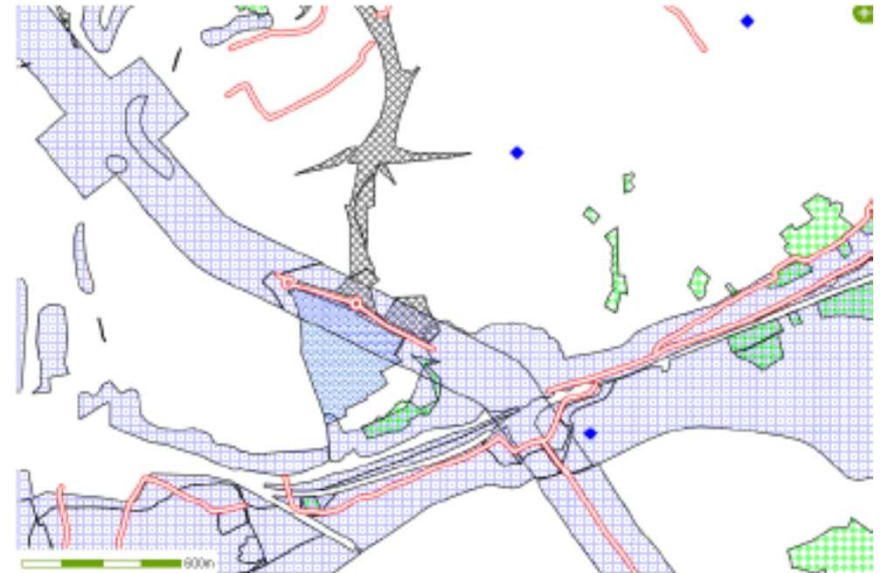
HLanData

- ✓ Zoning elements



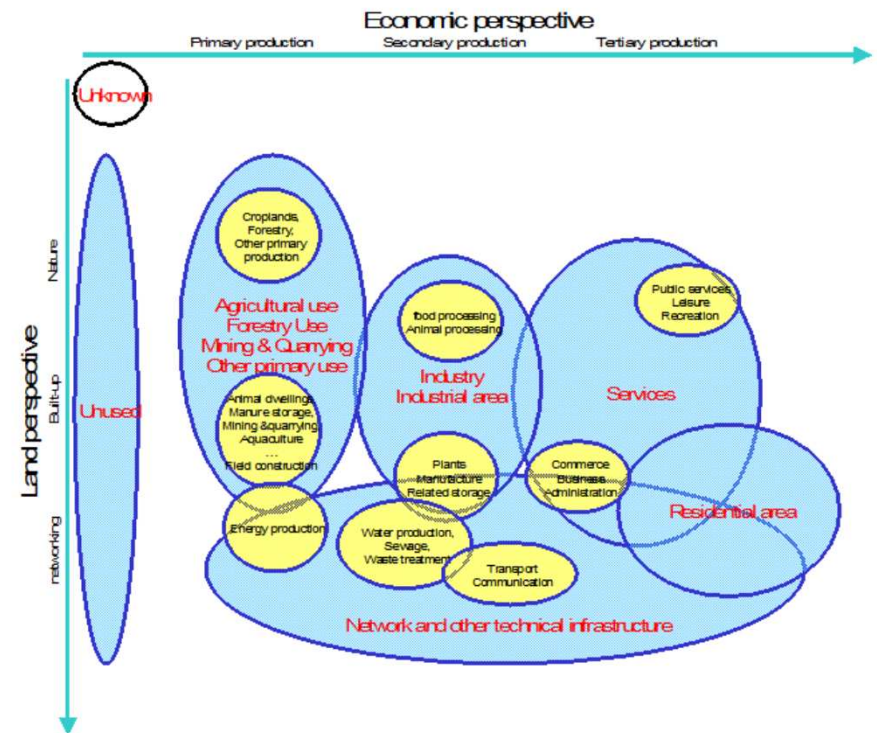
Planned Land Use

- ✓ Supplementary regulation





- ✓ At the crossing of two logics
 - ✓ Economic perspective
 - primary, secondary, tertiary sectors
 - ✓ Land perspective
 - Nature, built-up, networks
- ✓ Hierarchical
 - ✓ 3 levels
 - ✓ Only level one is mandatory
- ✓ Taking account of INSPIRE themes
 - ✓ HILUCS stops where theme specific geographical objects start





- ✓ Three consistent data models
 - ▶ Land Use Core model
 - ▶ Existing Land Use model
 - ▶ Planned Land Use model
- ✓ One key code list (nomenclature)
 - ▶ HILUCS: Hierarchical INSPIRE Land Use Classification system
- ✓ Quality parameters to evaluate
- ✓ Portrayal based on HILUCSValue



1. Will Coverage be easy to implement?
2. How will existing land use/cover datasets be converted into INSPIRE compliant Land Use or Land Cover datasets?
3. Will it be easy to turn INSPIRE-compatible the data producer's datasets?
4. Is the conversion to the INSPIRE model WPS-able?
5. Is HILUCS level-one easy to map with local usages?
6. How do you document the mapping between HILUCS and local classification systems?
7. How HILUCS evolution could be managed at the European level?
8. How will the code list for supplementary regulation be improved?

**Thanks for
you
attention!!**