

French building of SDI : a bottom-up or a top-down process?

Marc Leobet
For French Point of Contact

MIG/LBT - 29.06.11

Not so many prospective studies

- No specific study in France on impact of a SDI on growth
 - But a transposition of foreign studies, specially ACIL Tasmann report on spatial info value in NZ Economy (2009)
 - Estimated cost : 65 M€ for 5 years, mostly at local level
 - Estimated ROI less than 1 year
- Some studies in specific domains show $ROI < 1$ year in a context close to a SDI :
 - Upgrade of cadastral parcels to a seamless national dataset
 - Reliable Address datasets by stream from local to national level.

Time for tests : bringing a brick to the wall



- The experience in Rennes (Brittany)
- Many innovations
 - 1/3 from private sector; 2/3 from citizens (= IT graduates!)
 - Most of the dataset are spatial one's.
 - The private sector tests solutions and expects to develop in other Open data Cities
- Contest Innovation for inhabitants
 - 50 000 € for 7 winners
 - 43 apps

MIG/LBT - 29.06.11

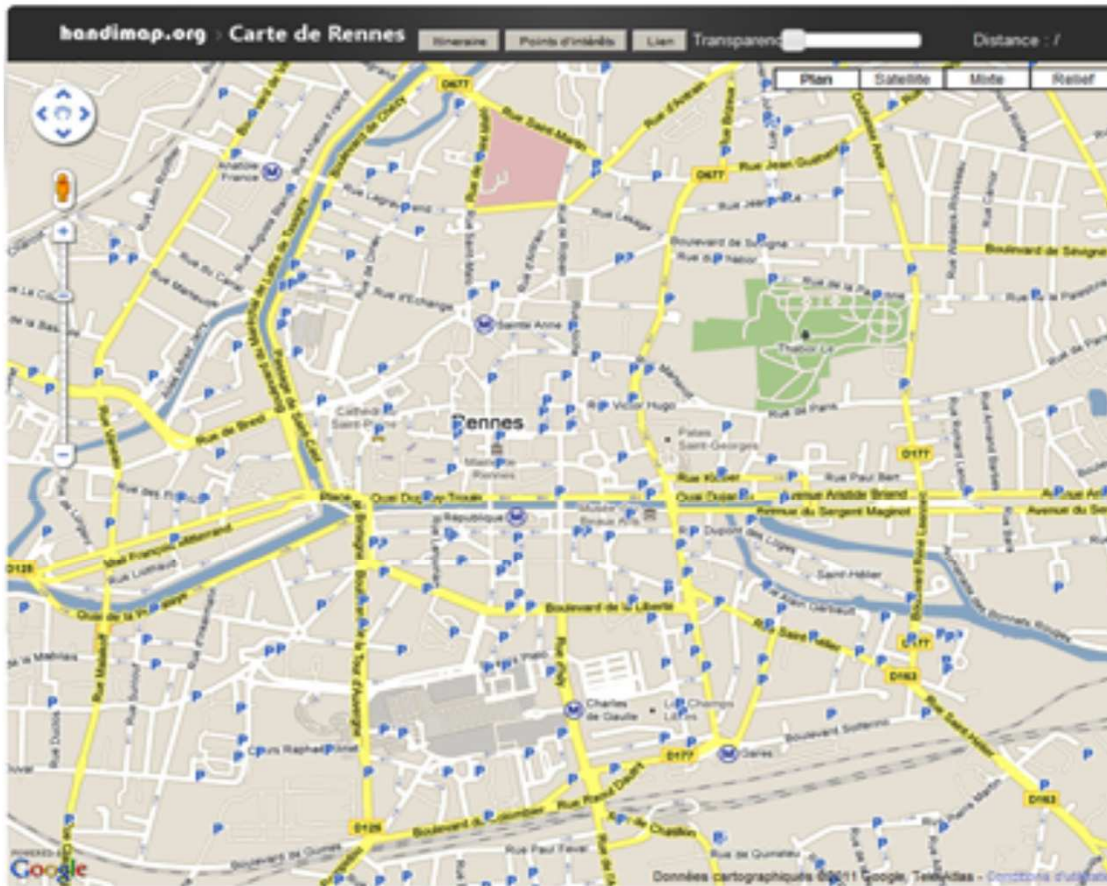


A city friendlier to disabled

www.data.rennes-metropole.fr

handimap.org
La ville accessible à tous

Accueil Carte Aide Contact A propos



Panneau de contrôle

↳ Itinéraire

↳ Points d'intérêts

Sélectionnez les points d'intérêts à afficher.

- Stationnements réservés aux personnes handicapées
- Surfaces podotactiles
- Carrefours à feux sonores
- Escaliers droits
- Ligne de métro (entièrement accessible)
- Lignes de bus urbaines accessibles
- Arrêts de bus accessibles
- Lieux et organismes accessibles
- Locaux Handistar
- Hôpitaux/Équipements médicaux

The experience in Paris

opendata.paris.fr

- Most innovations are for tourism or for citizens, for exemple :
 - Where recycling glass?
 - What is the history of the street names?
- A call for 40 smart urban furniture projects using Paris Data
 - To fund innovations to improve the real streets too
- As Rennes, Paris organizes App Contest for the web or mobiles

MIG/LBT - 29.06.11

...draw a puzzle at local level

- Cities for Open data : Rennes, Brest, Paris, Nantes, Montpellier, Bordeaux, Marseille, Toulon
- Most of the data are spatialised
- Almost are delivered in static package
- INSPIRE data sharing brings tools (OGC standards) to connect Open Data initiatives and data consumers (OSM, ...)

MIG/LBT - 29.06.11

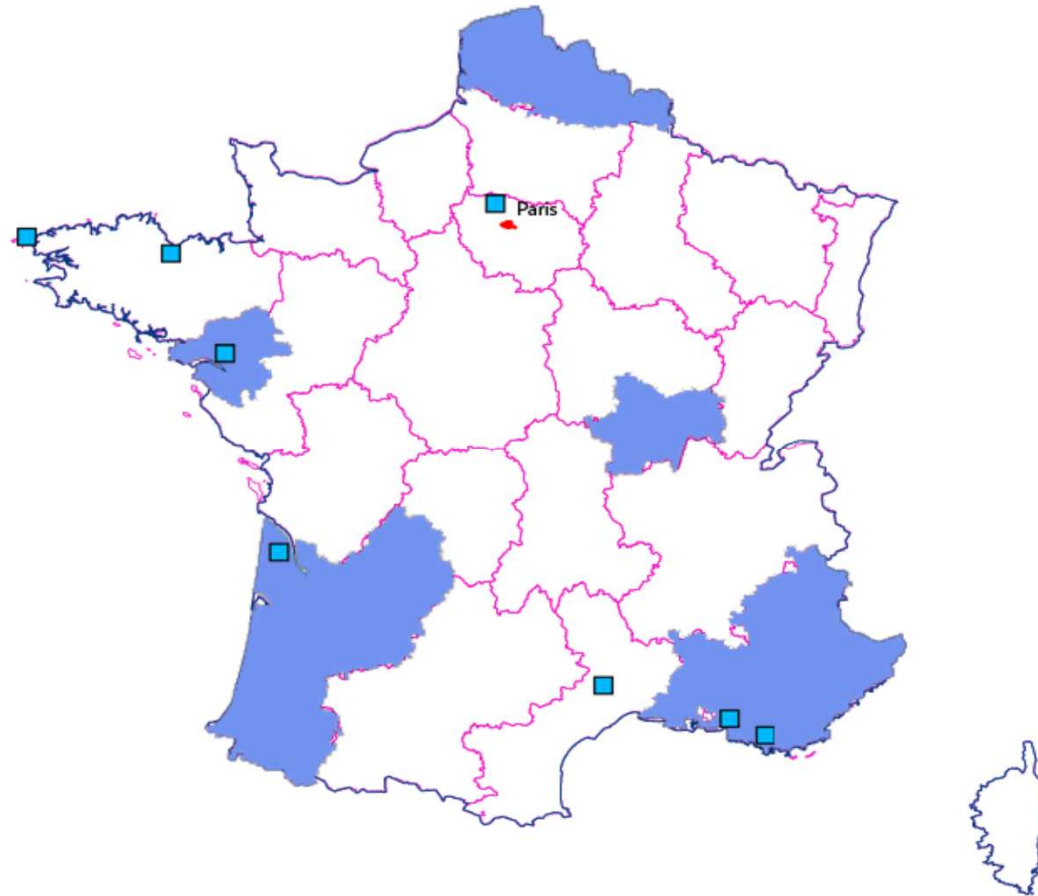


Liberté • Égalité • Fraternité
RÉPUBLIQUE FRANÇAISE



Ministère
de l'Écologie,
du Développement
durable,
des Transports
et du Logement

The pieces of Open data



Government builds the national level



- A major framework agreement between Government and IGN
- Funding the entire production of reference elements underpinning most local productions
- A data.gouv.fr for the end of 2011
- +Proxyma service + API Géoportail Contest...

MIG/LBT - 29.06.11

It is not a conclusion

- We are building a SDI, we have good stories but no estimation of the real impact;
- Many pieces of the puzzle come on the table, at sub-national and national levels;
- The innovation of the year is the change of minds of decision makers, both at local and national levels;
- It is the first step along the road...
- ...before building bridges.