

## **INSPIRE Discovery, View and Download and OGC standards**

Roberto Lucchi  
Esri



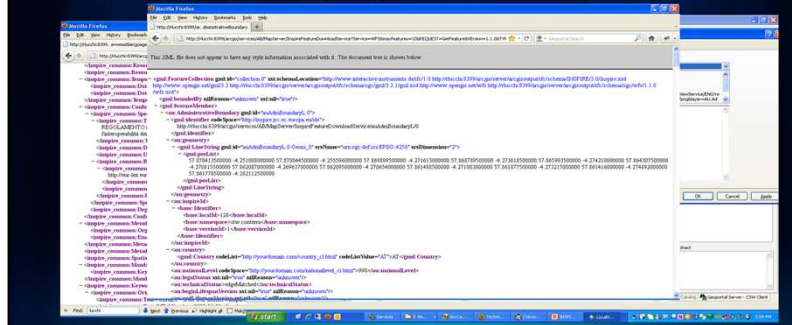
## INSPIRE and OGC standards implementation

- INSPIRE Implementing rules and specifically technical guidance documents are relying on existing standards
  - Makes perfect sense
  - Esri is an OGC member and actively contributes (OWS interoperability testbeds, SWG, ...)
  - ArcGIS supports OGC and ISO standards
  - ... but INSPIRE introduced requirements not met by OGC
    - Discovery: OGC CSW ISO AP 2.0.2
    - View: ISO 19128:2005(E) – WMS 1.3.0
    - Download: OGC WFS (+ GML 3.2.1)



## INSPIRE and OGC standards: what's different

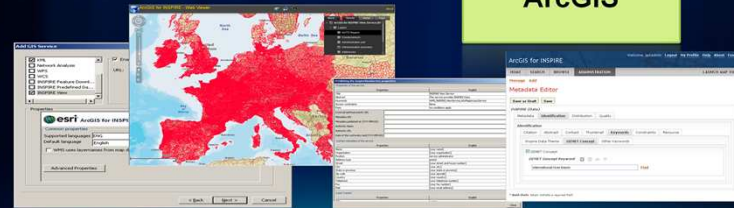
- INSPIRE Services extend OGC with
  - Capabilities documents, better connect these with ISO standards for metadata, additional information (e.g. supported languages)
  - Semantics, code lists (e.g. service type, layer names, ...)
  - Data models, encodings, symbols, ...



## ArcGIS for INSPIRE

Extends ArcGIS with Discovery, View and Download Services, Metadata, Data Models

- Compliant Services
- Data Models
- Integrated Tools
- Desktop and Server Extensions



*Compliance, data sharing and discovery throughout Europe using ArcGIS for INSPIRE*

## ESRI Is Committed To Supporting SDI

### Providing A Complete Platform

- Strong Server Technology
- Data Compilation, Management, and Analysis
- Free Web & Mobile Clients
- Open Use of Basemaps
- Open Standards Support
- Open Sourced Geoportal
- Mapping APIs
- INSPIRE Solution
- Ongoing Commitment
  - (Team, Engineering Resources, Support.... )



*A Platform for Sharing Collective Geographic Information*

## ArcGIS for INSPIRE

Discovery Services, View Services, Download Services, Metadata, Data Models



*Compliance, data sharing and discovery throughout Europe using ArcGIS for INSPIRE*

## Focus on Applications

- Deploy once and use many times: Client applications are a key perspective
- Recognize and leverage INSPIRE additional capabilities is essential in order to create added value out of INSPIRE

→ Forms to express profiles and extensions

- Functional
- Semantics
- Encoding



## Focus on Applications

### • Examples

- Functional
  - Additional CSW queryables
  - Multilingualism (all INSPIRE services, metadata)
- Semantics
  - The language element used to filter a discovery CSW request also indicates the language to be used for exception messages
  - Language neutral layer names  
AU.AdministrativeBoundary
- Styles (e.g. inspire\_common:DEFAULT)





## Focus on Governance

- INSPIRE is a long term commitment
- Strong compliance requirements
- Versions of OGC
- Versions of INSPIRE technical guidance documents
- Example: INSPIRE View and Discovery Services  
TG version 2.12 and 3.0
  - Rely on the same OGC specification version
  - Implications on backward compatibility





Both government and technology are continually evolving and this presents new opportunities for resolving big issues. The changes that we see in the government in addressing the big challenges: collaboration with other government entities. The changes we see in technology support the changes in government, but also present new ways government can address these challenges.

Think about the rapid adoption of social media government agencies have gone through to establish multi-directional communication.

