

# Current status of the INSPIRE Directive transposition into Croatian legislation

Tomislav Ciceli, Ljerka Rašić, Željko  
Hećimović, Danko Markovinović

State Geodetic Administration  
Zagreb, Croatia



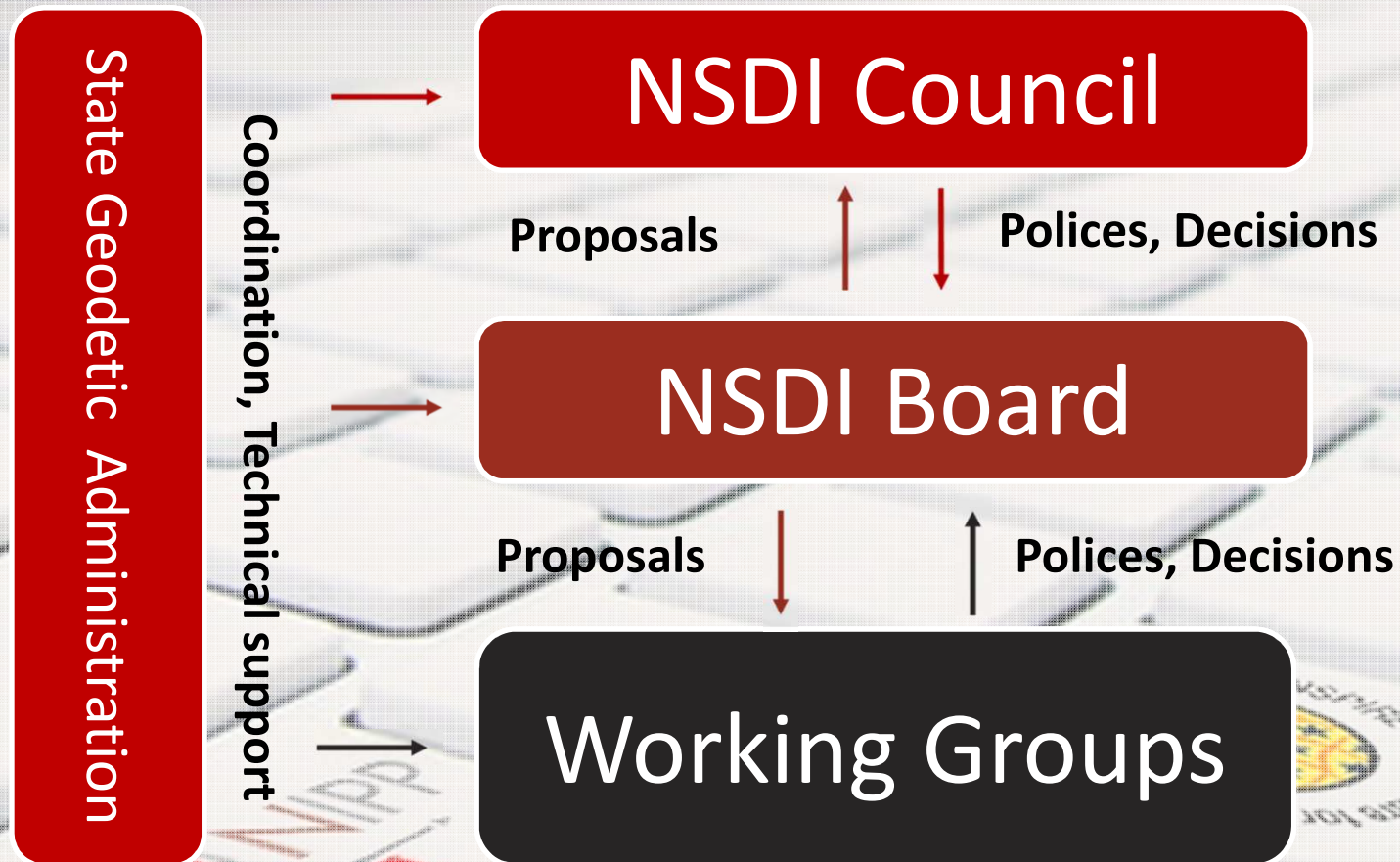
# Yesterday: Milestones of Croatian SDI...

- 2001 - the European Commission launched the *Infrastructure for Spatial Information in Europe* (INSPIRE)
- 2001 – SGA’s study “Review of EU requirements for Geographic Information Infrastructure in Croatia”, Bloominfo, Denmark
- 2005 – SGA’s “Study on Development of National Spatial Data Infrastructure in Croatia”, Con Terra, Germany
- 2006 – SGA’s study “Croatia: National Spatial Data Infrastructure and Inspire” Geolink Consulting, UK

# Yesterday: Milestones of Croatian SDI...

- 17th February 2007 - Law on State Survey and Real Estate Cadastre (02/2007) – **the first regulation on NSDI in Croatia**
- 15th May 2007 – Inspire Directive 2007/2/EC of the European Parliament and of the Council entered into force.

# Today: NSDI in the current Law



# Today: NSDI legislation in Croatia

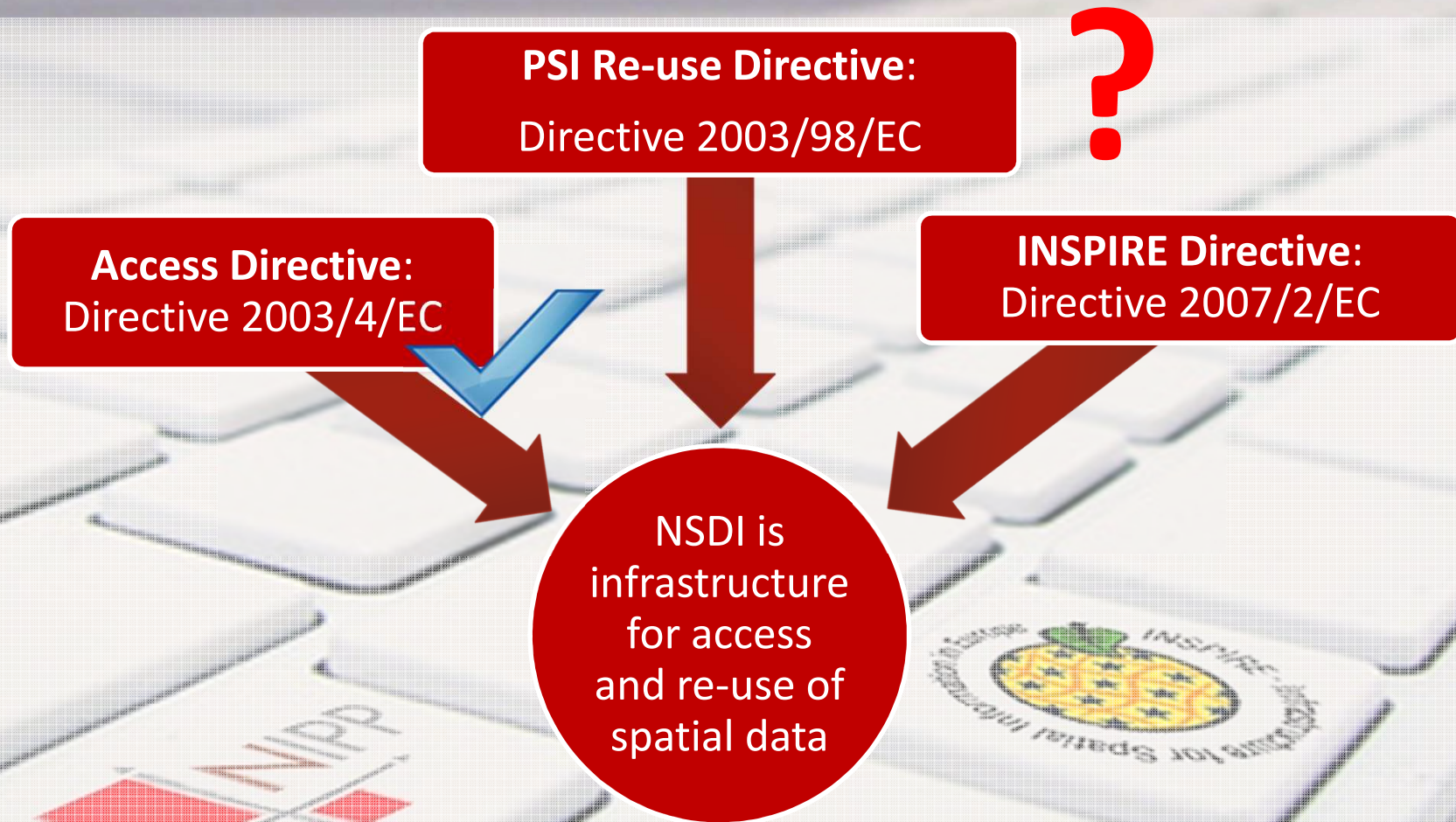
- Law on State Survey and Real Property Cadastre (OG 16/2007, 124/10)
- Implementing Rules for Metadata (OG 102/10)
- National Metadata Profile (11/2011)
- Implementing Rules for Network Services (OG 46/12)

# Tomorrow: Inspire transposition

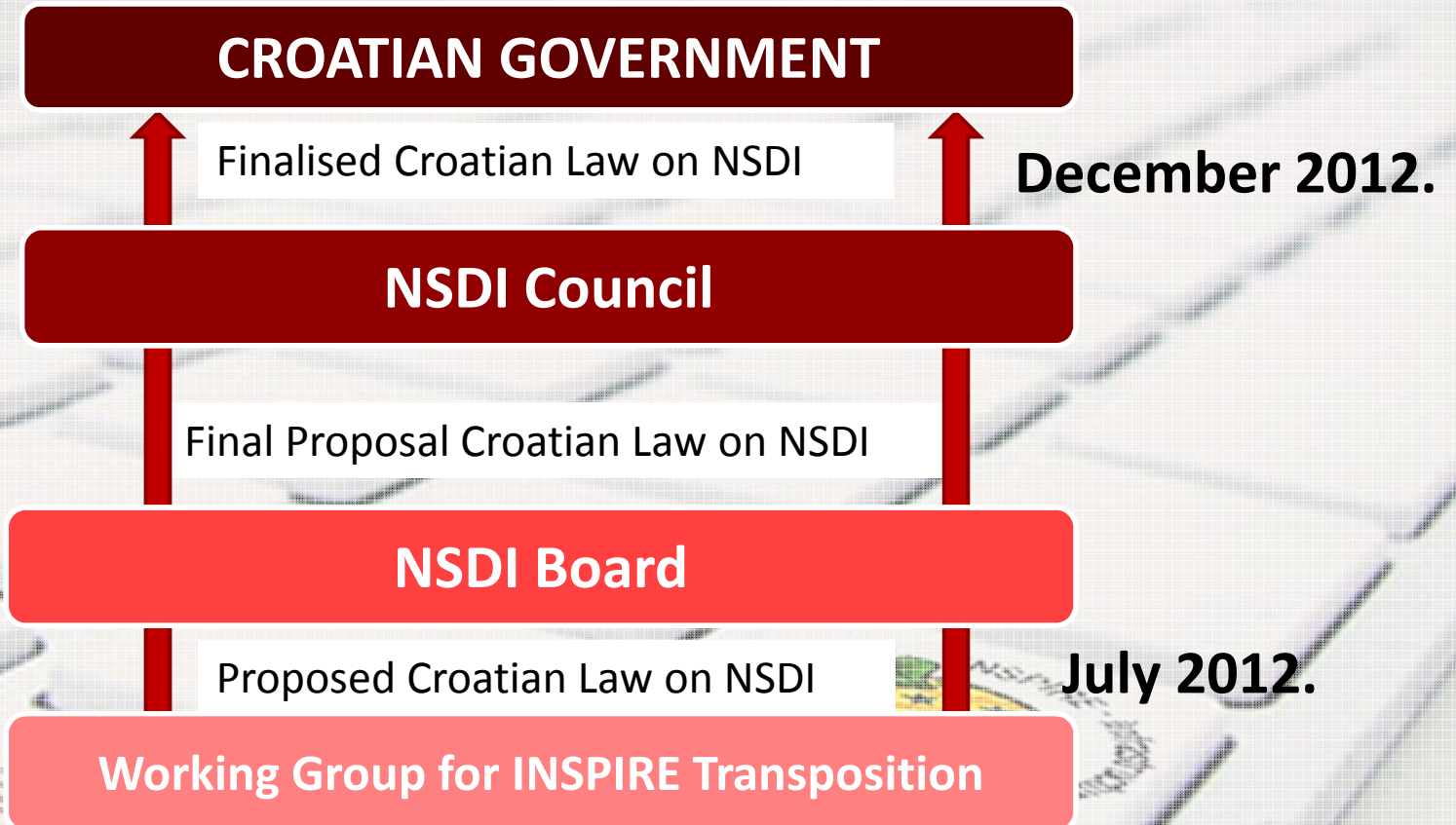
- In 2009 Inspire directive was included in the National Program for Accession European Union – obligation to transpose it till joining EU
- Plan to prepare draft of the Law in 2012.
- After 2015 Croatia is obligated to follow INSPIRE timeline.

1/1703

# Tomorrow: Inspire transposition



# Tomorrow: Inspire transposition





# Few thoughts for the end

- “NSDI seems to be about the harmonisation of spatial information. What it’s really about is the coordination of organizational behavior.”
  - *Paraphrase of David Schell, Founder and Chairman of the OGC*
- The problem is not the law. The problem is its implementation

Thx for Your attention...

**Tomislav Ciceli**

**[tomislav.ciceli@dgu.hr](mailto:tomislav.ciceli@dgu.hr)**

**State Geodetic Administration**

**Gruška 20, Zagreb, Croatia**

