



INSPIRE Maintenance

Vanda Nunes de Lima

INSPIRE Conference, Istanbul 2012

Outline

- *Agreed Framework for short term maintenance and implementation**
- *Why it is important planning maintenance**
- *Short term program**
- *Other actions**



Agreed Framework - summary

- ✓ **Proposal agreed at INSPIRE Committee Meeting 09/12/2011**
- ✓ **Based on main principles**
 - **Support further implementation of the IRs in the Member States**
 - **Responsive to lessons learned from the implementation**
 - **Ensure the cross-cutting coherence of the components of the infrastructure**
 - **Flexible for taking into account requirements emerging from environmental policies**
 - **Adequately resourced and organized for dealing with event-driven requests and needs for maintenance and evolution**
 - **Applicable to all INSPIRE components covered by the IRs**
 - **Maintain the open participatory approach**
 - **Fully compliant with the Comitology procedure**
- ✓ **Roadmap for setting up the INSPIRE Maintenance and Implementation Framework foreseen**



Setting up the INSPIRE Maintenance & implementation framework



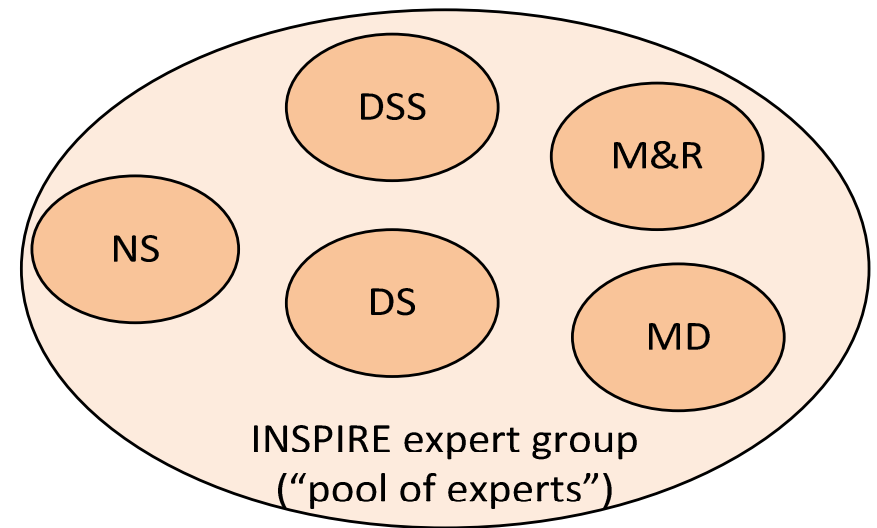
- Mobilization of expert resources is key to success → MIF will not start from scratch
 - substantial pool of expert knowledge already available
 - mandate of pool of experts which are still working on IR development can be extended to the MIF
 - But tasks of the development experts will come to an end when the IRs are adopted or when their mandate expires (IOC TF)
- Official MIF governance structure: official INSPIRE Expert Group to be set up by EC
 - coordinated by the EC
 - support the activities of EC, the IC and stakeholder community



Setting up the INSPIRE MIF



- Member States will be invited to propose experts to the MIF through
 - contact points to the Commission (Article 19.2)
 - the wider stakeholder community
- Experts will be selected by EC
 - according to their qualifications in relation to thematic and cross-cutting components of the IRs and accompanying implementation measures
- Coordination & maintenance joint effort by EC & MS
 - EC to provide secretariat & financial support for logistical expenses
 - MS to support experts' in-kind contribution



Setting up the INSPIRE short term Maintenance

EC will issue and update regularly a work programme

- to allow experts to plan and quantify their efforts
- based on change requests/ necessary
- discussed with the Member States
- regular updates to reflect newly identified issues and priorities

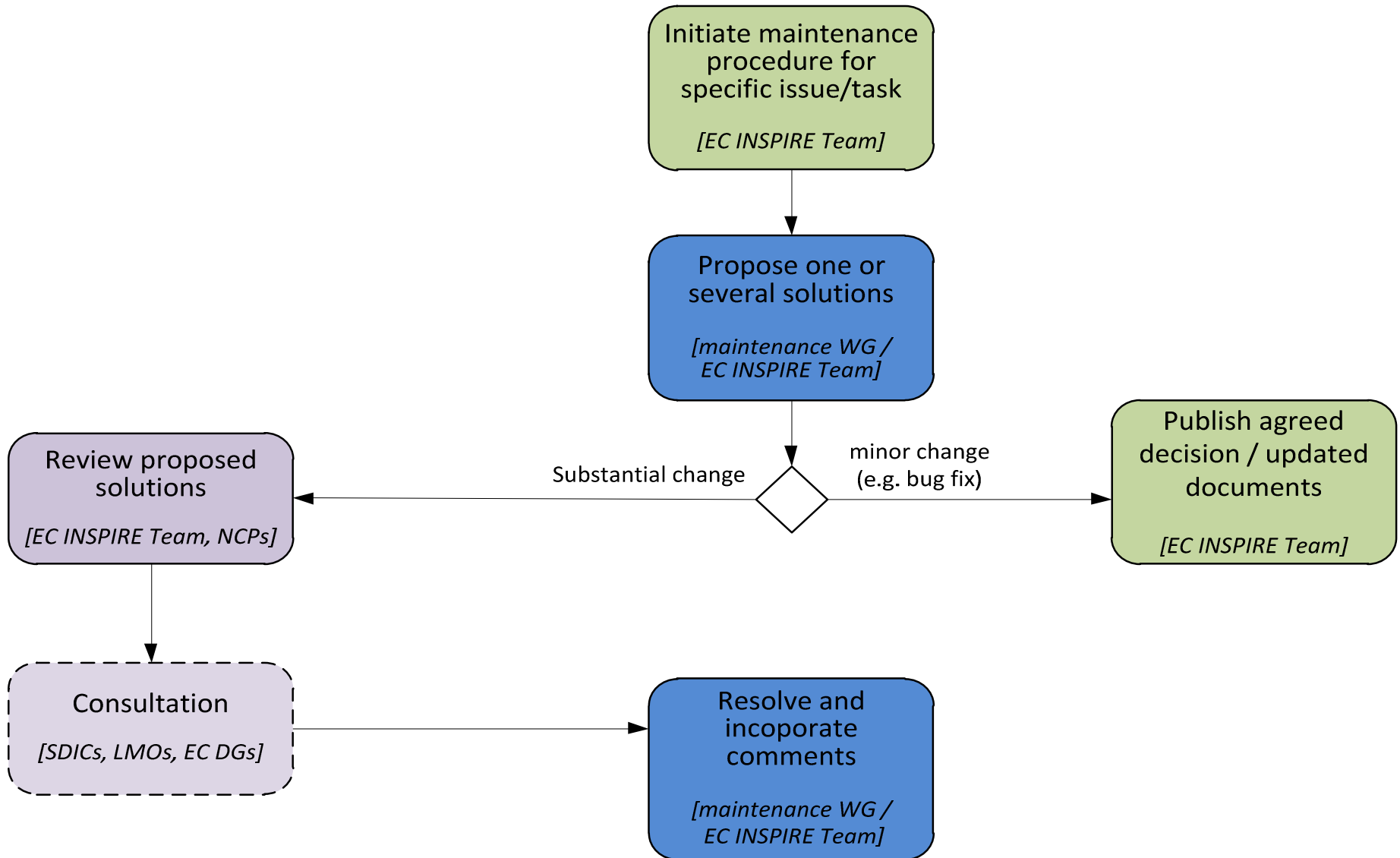
Ad-hoc working group(s) set up according to work programme identified priority

Transition period

- Process of setting up the Expert Group and rolling work programme will require 4 to 6 months
- Proposal to mobilize or reactivate in a more informal way the experts available in the DTs, TWGs and IOC TF for dealing with urgent maintenance issues already identified

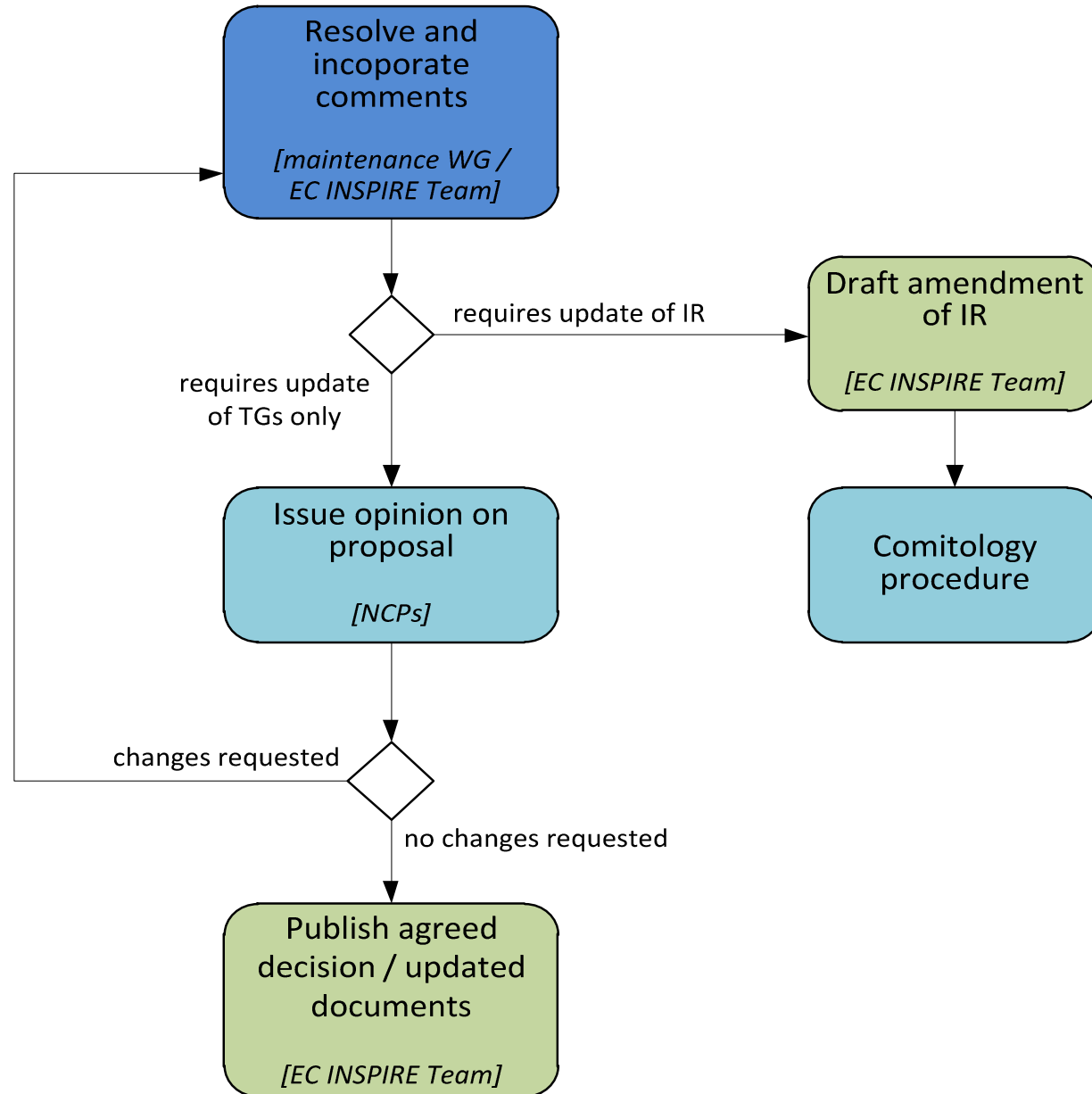


MIF Operational Procedures





MIF Operational Procedures



Why maintenance and implementation is important to start as soon as possible

- Experience from implementation, all INSPIRE components
e.g. Metadata
- Capitalise the good practices, to share experiences among MS
- To improve what needs better solutions
 - lack of time or maturity during the development
 - experience from implementation
- To be in line with technical developments
- To accommodate new requirements when relevant
- To keep the process alive from implementation / corrections /improvements based on user requirements

Next actions

1-Draft short term work programme 2013 for implementation and maintenance:

Priorities derived from implementation issues

2-Consultation on draft work programme 2013

3-Define Terms of Reference for INSPIRE Expert Group (“pool of experts”)

4- Feedback from MS on proposed ToR

5- Call for participation in INSPIRE Expert Group

6- Propose experts in response to call for experts

