

The French geoportal for Spatial plan (Géo-portail de l'urbanisme): a spin-off of INSPIRE?

François Salgé

Content

- ➔ What is the 'Géoportail de l'urbanisme'
- ➔ Challenges for continuous and distributed updating
- ➔ Views from the computer and organisational architecture
- ➔ Conclusion

What is the 'Géoportail de l'urbanisme'

- ➔ A one stop shop for accessing spatial plans and Public utility easements
- ➔ Part of the investment plan for housing (March 2013)
- ➔ For a greater transparency regarding spatial regulation over the French territory
- ➔ Accompanying the 3rd decentralisation wave
- ➔ In agreement with the INSPIRE directive

Legal context

December 2013 ordinance (the law)

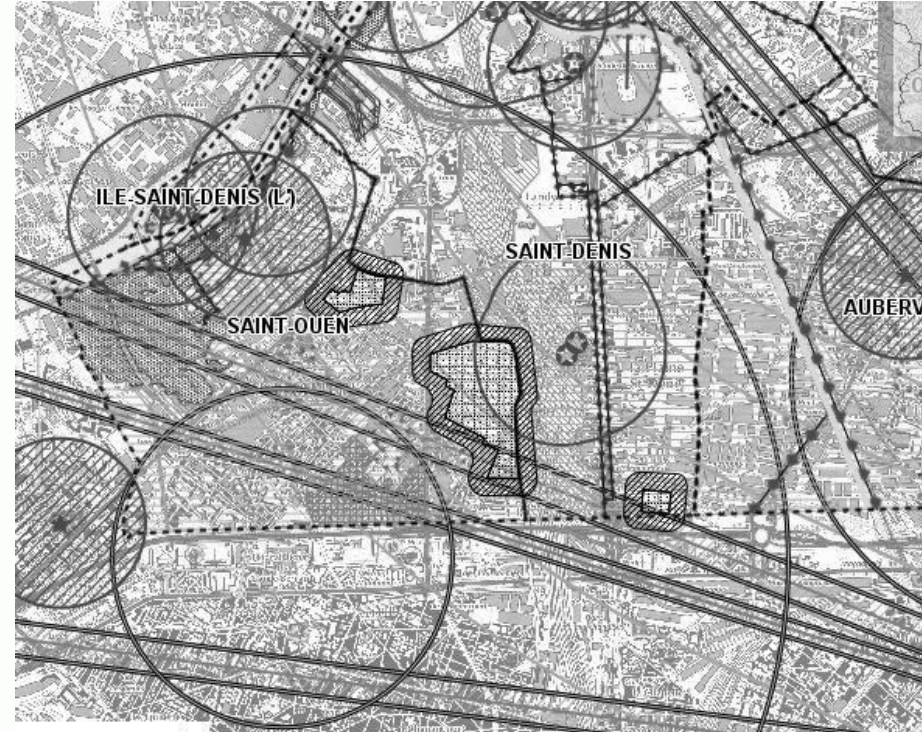
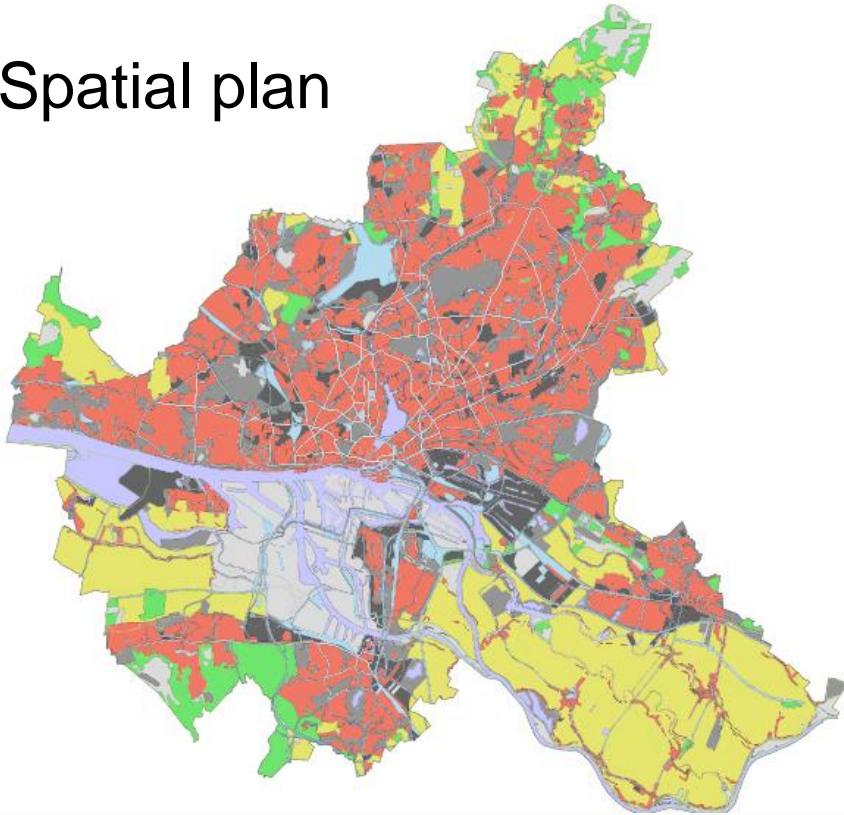
- ➔ Equal access for all citizens to a quality and validated information
- ➔ Obligation to have and make available spatial planning documents in a (GIS) standardised digital form
 - ➔ For local governments: their spatial plans
 - ➔ For the State: the public utility easements

In INSPIRE terminology

- ⇒ Spatial plans
 - ⇒ “SpatialPlan” object type
 - ⇒ “planned land use” package
 - ⇒ theme 3.4 “Land use”
- ⇒ Public utility easements
 - ⇒ “ManagementRestrictionOrRegulationZone” object type
 - ⇒ theme 3.11
“area management/restriction/regulation zones and reporting units”

In Image

Spatial plan



Public utility easements

Timing

- ➔ July 2015: public utility easement beneficiaries
 - ➔ Delivery of their documents in digital form according to the CNIG "géo-standard"
- ➔ January 2016: local governments
 - ➔ Delivery of their spatial plans in digital form according to the CNIG "géo-standard" **as soon as they are modified**
 - ➔ Internet publishing of their in-force spatial plans (free format)
- ➔ 2020 : all on line documents (spatial plans and public utility easements)
 - ➔ in standardised digital form **will enter into force only if** published on the "Géoportail de l'urbanisme"

European and standard context

- ➔ Ordinance in line with the INSPIRE directive implementation
- ➔ Facilitating factors
 - ➔ Pre-existing CNIG standards “compatible” with the INSPIRE standards
 - ➔ The french www.geoportail.gouv.fr as the INSPIRE implementation in France
 - ➔ 56% of the spatial plan already in digital form according to CNIG standards
 - ➔ Ministerial experience through GéoADS for applying the building permits instruction

What it looks like



Table de données sur l'entité sélectionnée

Zones des documents d'urbanismes

Attribut	Valeur
LIBELLE	UB
LIBELONG	zone d'urbanisation nouvelle proche de l'ancien bourg
TYPEZONE	U
DESTDOMI	01
NOMFIC	41226_reglement_20110707.pdf
URLFIC	http://bibliotheque.geo-centre.fr/ddt41/urbanisme/regl/41226_Saint_Ouen_PLU.pdf
INSEE	41226
DATAPPRO	2011/07/07

Afficher la légende

Croquis

Enregistrer

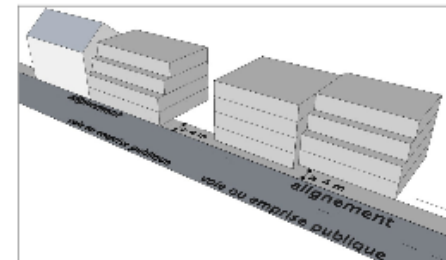
TITRE II – Zone U2

- L'implantation des constructions doit être compatible avec les principes d'aménagement définis par l'orientation d'aménagement et de programmation.

b. Dans le seul secteur U2c

b.1. Dispositions applicables aux unités foncières ayant une façade sur l'avenue Gérard Yvon

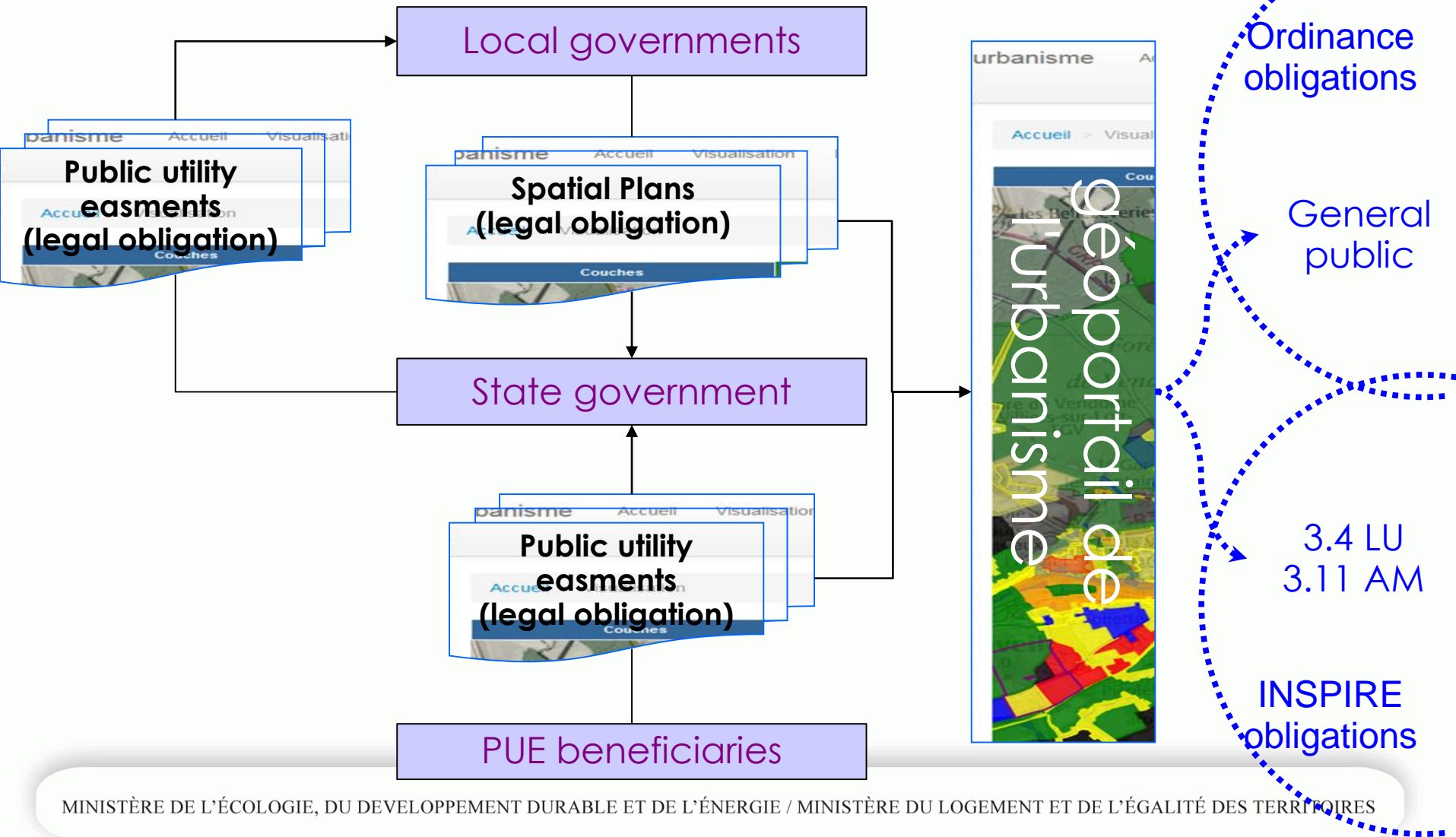
- Les constructions doivent être implantées :
 - à l'alignement
 - Les étages en attique, en retrait de l'alignement, sont toutefois admis sur les deux derniers niveaux,
 - ou avec un retrait de 4 mètres maximum de l'alignement
 - Les étages en attique, en retrait de plus de 4 mètres de l'alignement, sont toutefois admis sur les deux derniers niveaux.



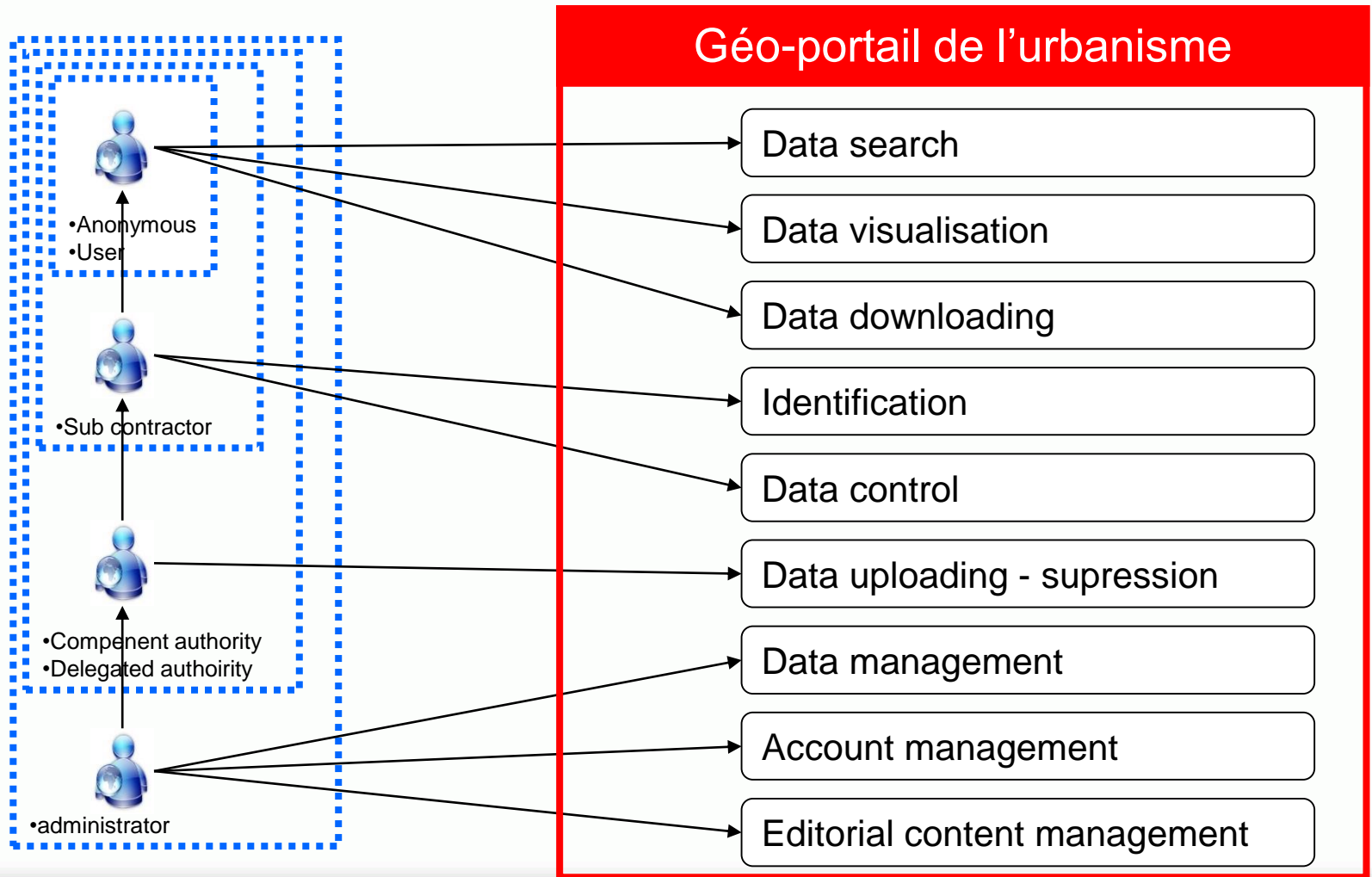
b.2. Dispositions applicables aux autres unités foncières

Challenges for continuous and distributed updating

Target organisation (Ordinance)

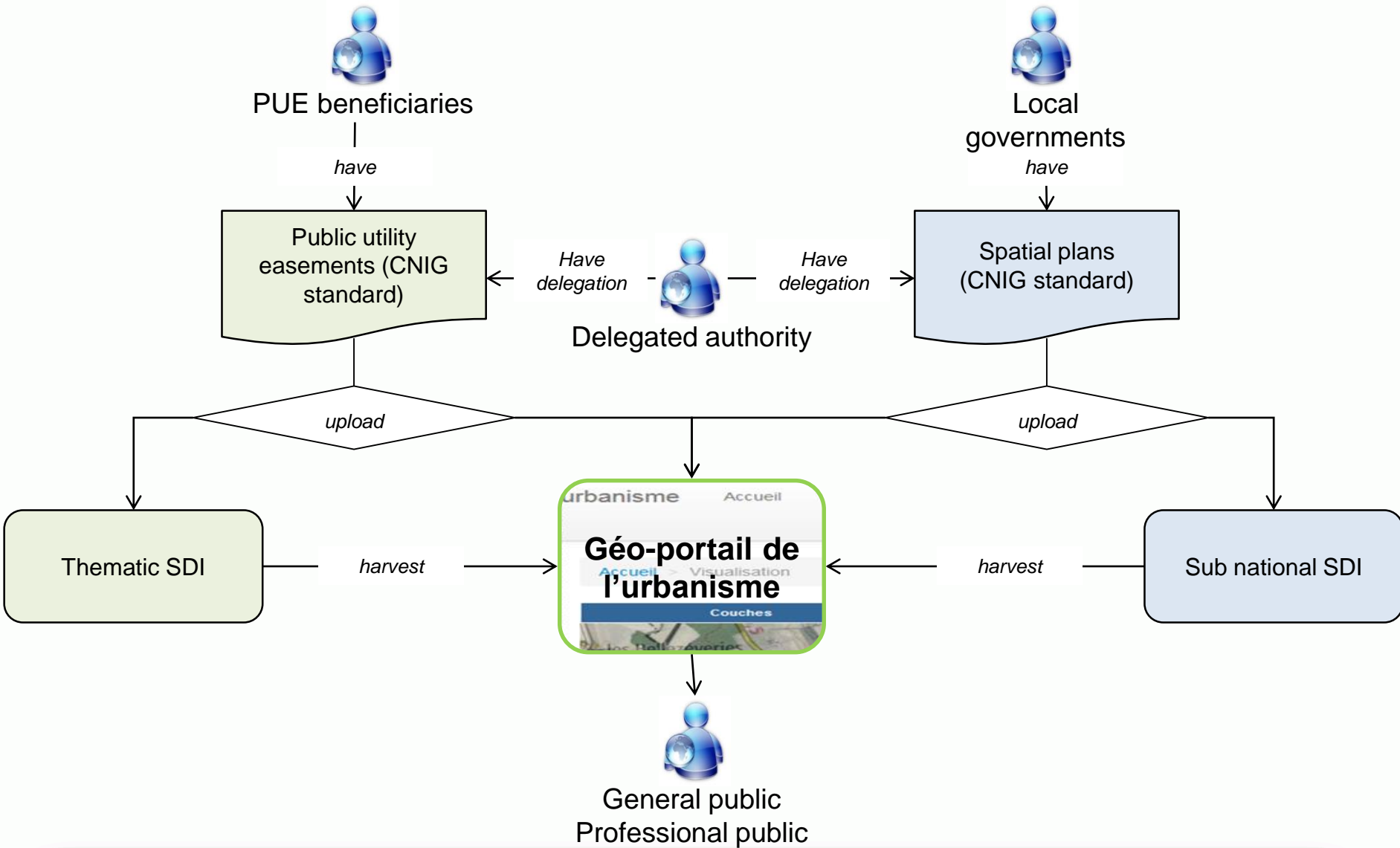


Users' profiles



Challenges for continuous and distributed updating

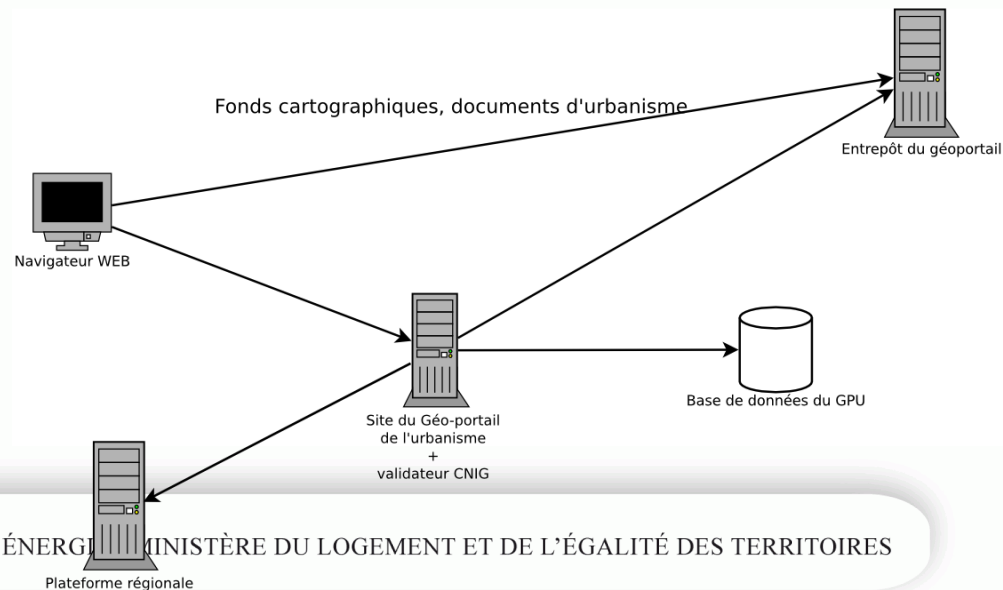
- ➔ Competent authorities in charge of uploading the “Géo-portail de l'urbanisme” with their documents at each création or updating
 - ➔ Can delagate its duties to a delegated authority
 - ➔ MUST explicitly designate its delegated authority if necessary
- ➔ Delegated authority
 - ➔ Inherits rights and duties of the competent authority that delegated
 - ➔ Could be
 - ➔ Local state governments authority
 - ➔ Sub national SDI
- ➔ Possible mechanisms
 - ➔ Automatic synchronisation (ATOM)
 - ➔ Web services (WFS)



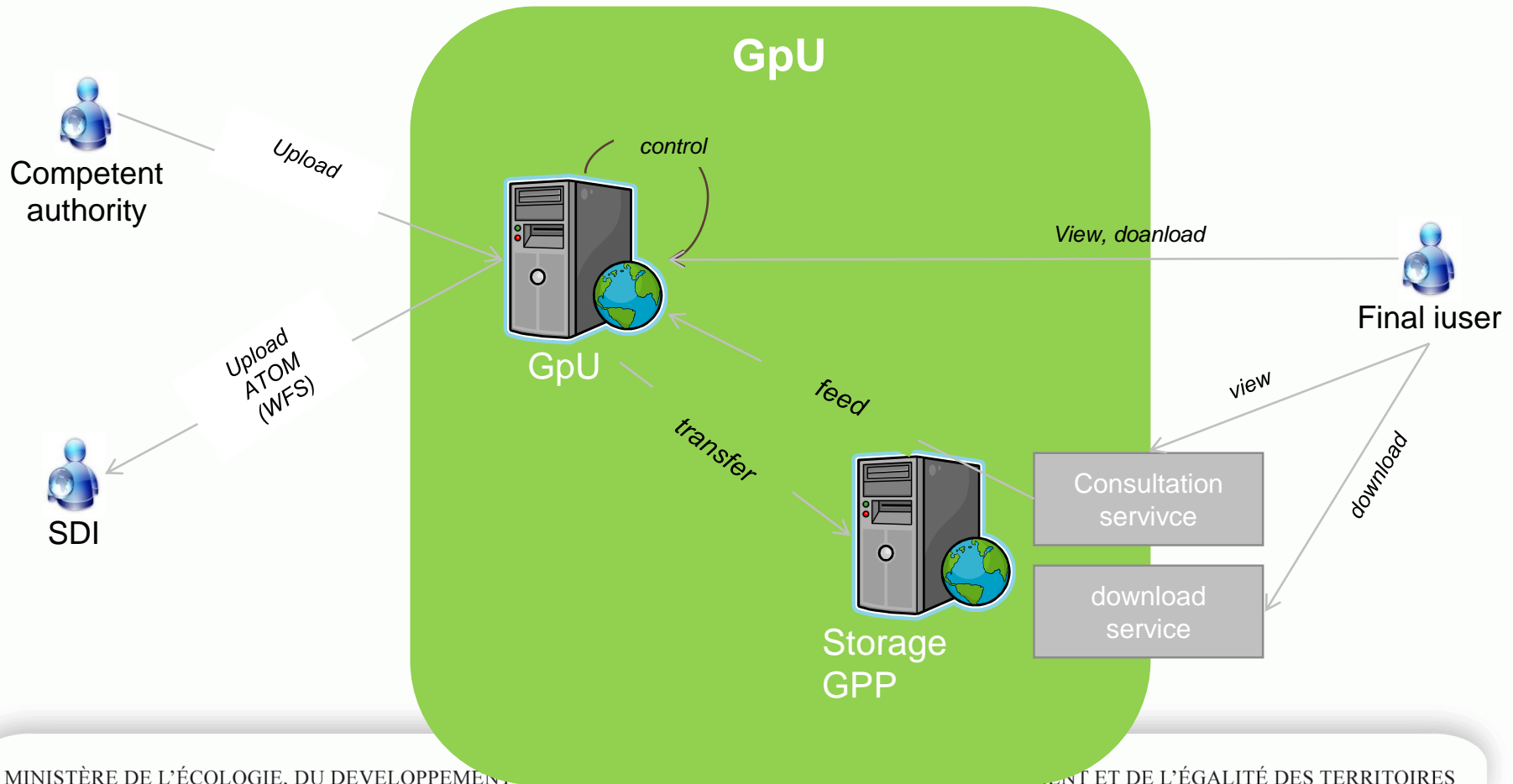
Competent authority registration

- ➔ A PDF form
 - ➔ Pre-filled form uploaded, printed, signed by the competent authority
 - ➔ Sent to the ministerial department for validation.
- ➔ Content:
 - ➔ Designation
 - ➔ Type of account
 - ➔ Name and first name
 - ➔ Poste occupé par le demandeur au sein de la structure
 - ➔ e-mail address
 - ➔ Geographic extent of responsibility (administrative unit)
 - ➔ Date
 - ➔ Signature

Views from the computer and organisational architecture



Technical architecture



Best practices reuse

- ➔ Data standardisation
 - ➔ For upload
 - ➔ For automatic upload
- ➔ Data structure validation
- ➔ Existing data (stock) integration
- ➔ Updating data (flow)
 - ➔ Data set id
 - ➔ Syndication system for automatique upload

Risk log

- ➔ How to avoid double dataset?
 - ➔ For metadata
 - ➔ For data
- ➔ How to assess that data comply with standard?
 - ➔ Many existing datasets do not already fully comply with CNIG standards
- ➔ How to meet technical and legal constraints
 - ➔ Duplicate data
 - ➔ to ensure equal performances everywhere
 - ➔ but ensure it is the document that is in force
 - ➔ INSPIRE implementing rules and recommendations

Conclusion

- ➔ The “géo-portail de l’urbanisme” is on its way
 - ➔ Ordinance published, regulations and recommendations on their way
 - ➔ Key conception phase is achieved
 - ➔ Detailed spécification is finalised
 - ➔ First developments are provided
 - ➔ Versions are planned
 - ➔ Version 1 end 2014
 - ➔ Version 2 mid 2015
 - ➔ (Version 3, 4, 5 etc.)
- ➔ INSPIRE was an incentive
 - ➔ During political push (with exemples from abroad NL-IE)
 - ➔ During definition (reuse of INSPIRE implementation via www.geoportail.gouv.fr)
 - ➔ When 100% operational (automatic translation to INSPIRE spécification)

**Merci
Thanks
Tak**