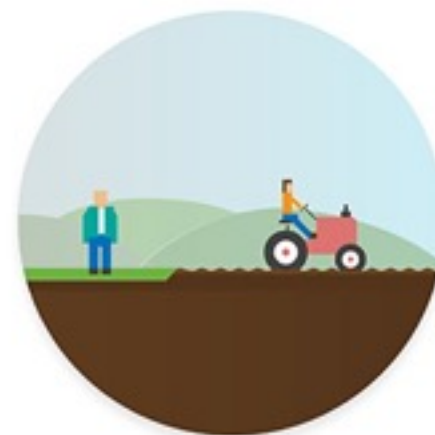
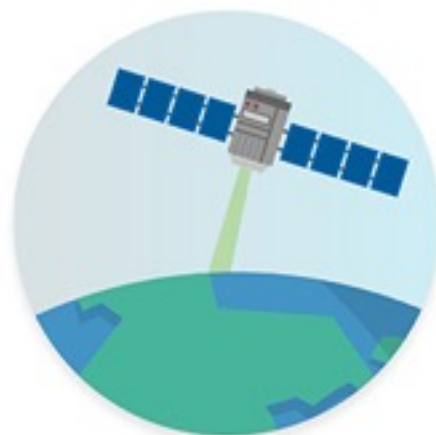




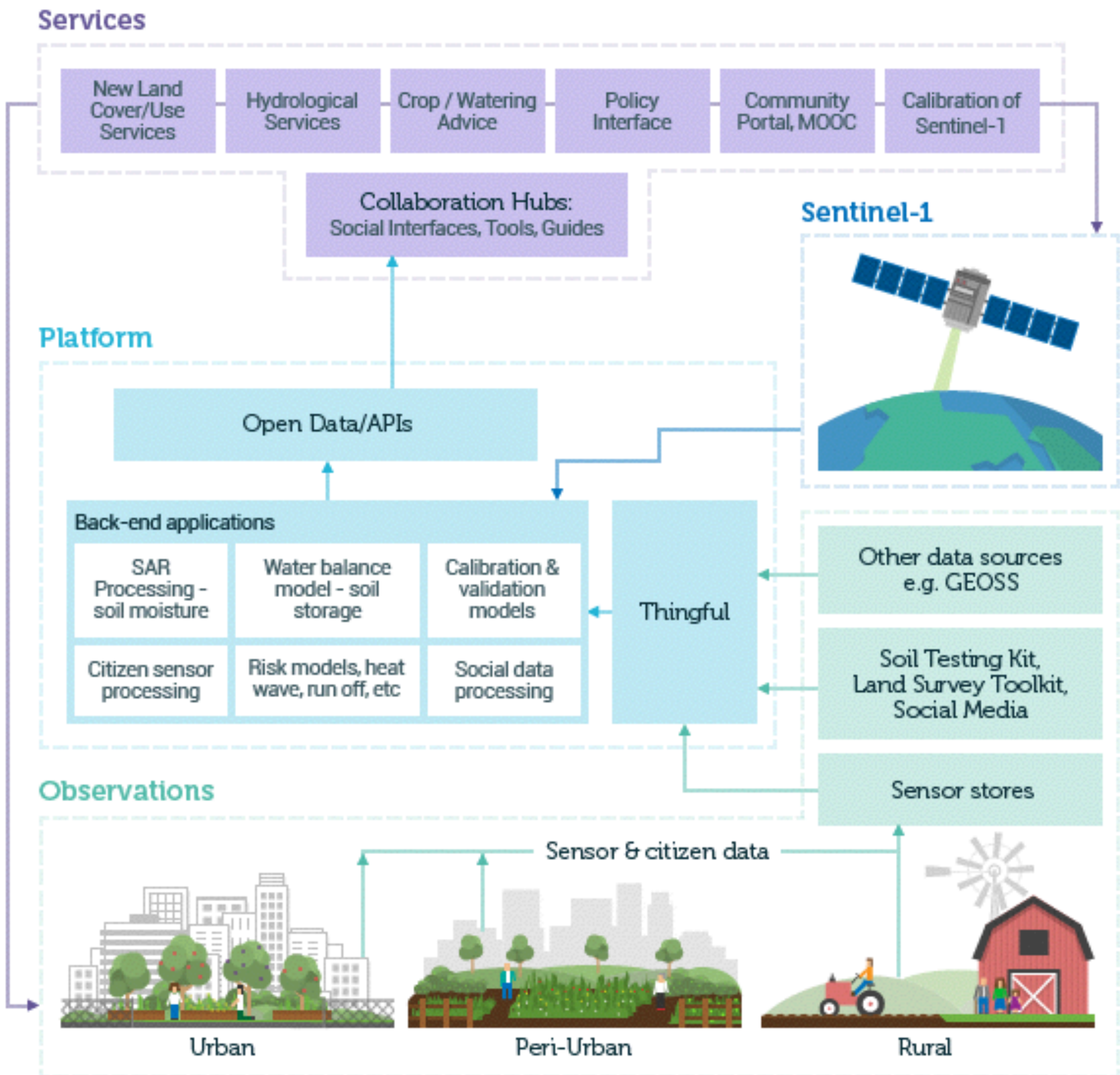
GROW
OBSERVATORY



A citizen observatory for growers, gardeners, small and family farmers, and space scientists.

- European growers and small scale farmers empowered with new collaborative knowledge, and participating in land and soil governance.
- Increase the number of soil moisture measurement sites in Europe from hundreds to many thousands.
- Develop new services using citizen contributed soil moisture data, contributing to validation of satellite-retrieved soil moisture products.
- Becoming self-sustaining, with potential for replication in regions including the Sahel.

Start date 1 November 2017.





Martine. 49. France
Education
Civil Service

Motivation: My school has a Eco Schools award and Code Club. Our local council wants to bring eco and science together, and set up a GROW sensor Campaign for all schools across the region.

Issues: Science and education, Excite pupils about soil and tech, Validate satellite data

C1 Sensing Pilot Year 1. Trialling w/ Flower Power community the GROW Alpha platform integrating sensor & GEOSS data for crop info service.



Juan. 42. Latvia
Family Farmer, Rural
Business

Motivation: I have recently inherited a small family farm, and I want to optimise the quality of the soil which has degraded over years due to erosion. It is affecting the quality of my produce, which is also declining, meaning loss of revenue.

Issues: Water resource, Land Degradation, Adapt crops/practices to climate, Erosion

C2: Land Degradation Farm Scale. Year 1. Validate the Soil Testing Kit and promote its use w/ farmers to enable them to adopt best land management practices.



Lena. 25. Greece
Smallholder, Urban,
Business

Motivation: I am working on a business plan for food start-up. I need access to more land along with other people who want to help me. We are learning as we go and need information on cultivating land.

Issues: Land access. Changing land use, or improving rented land. Food and nutrition.

C3 Land Use Change New Growers. Year 2. Empower citizens to cultivate land for the first time, across rural and urban continuum.



Tim. 49. UK
Land Manager, Urban
Civil Service

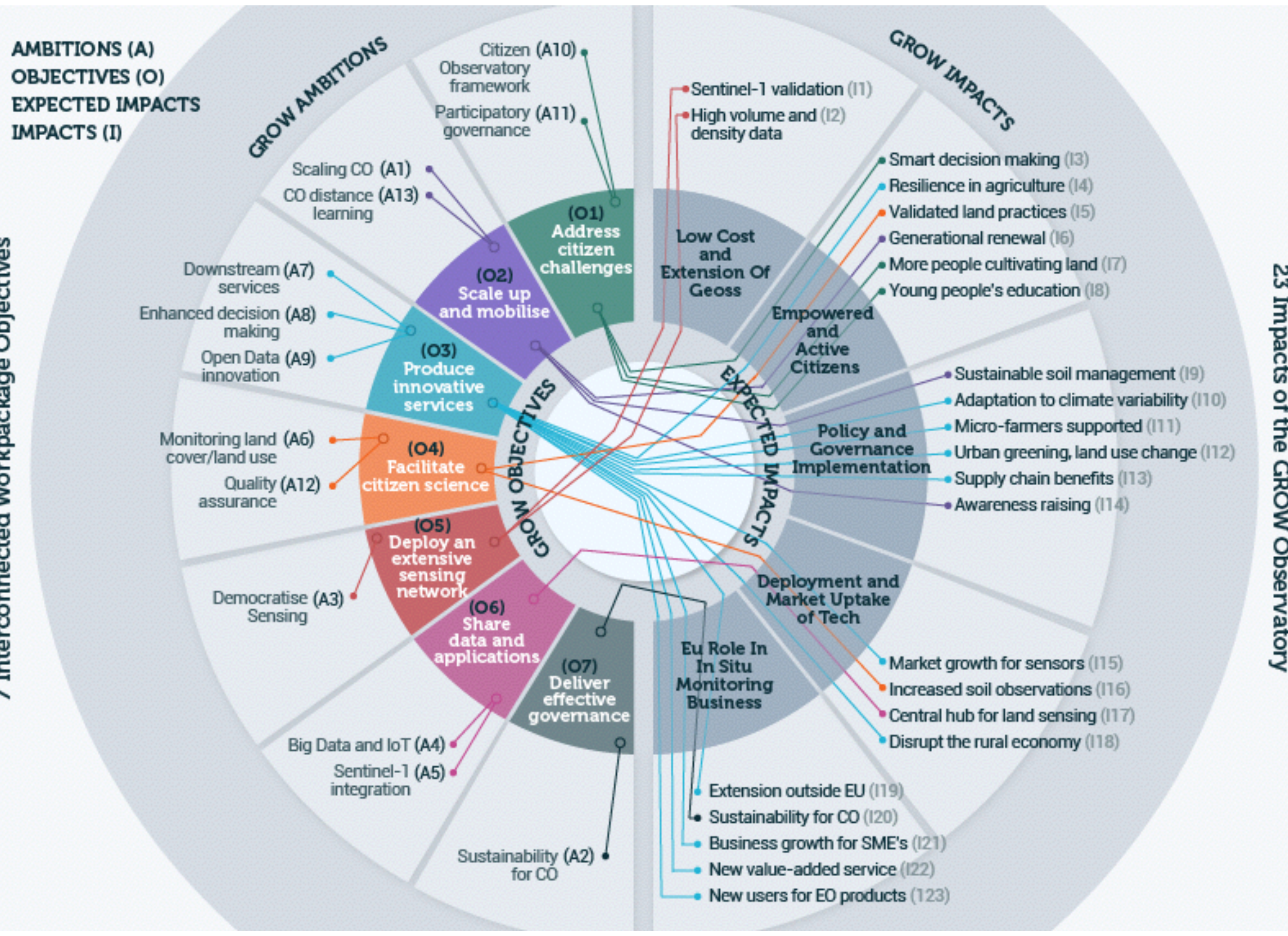
Motivation: I manage a municipal park that has an active award winning community garden. I am helping other towns and cities with similar schemes, they need help with site selection and design, as well as basic growing skills.

Issues: Self sufficiency, Sustainability, Precision farming expensive, Soil as a global commons.

C4 Validating Sustainable Practices. Growers and gardeners enhancing, validating and sharing smart and sustainable cultivation techniques (e.g. permaculture).

7 Interconnected Workpackage Objectives

23 Impacts of the GROW Observatory



Partners

University of Dundee

International Institute for Applied Systems Analysis

Food and Agriculture Organisation of the United Nations

Met Office

Hydrologic Research

Starlab

FutureEverything

European Network for Community-Led Action on Climate Change and Sustainability (ECOLISE)

Cultivate

CulturePolis

Parrot

James Hutton Institute

Vienna University of Technology

Thingful

Institute for Advanced Architecture of Catalonia

Storythings

University of Miskolc

The Forest Trust