



WFS | SOS

The fine line between



Which Witch?

- So – you have data, but how will you serve it?
- Just spatial stuff – OK – easy – use WFS and be happy 😊
- Oh – there's more – you have measurements on your features

WFS

?

WCS

SOS

Which Witch?

Why bother with anything else than WFS?

- WFS missing relevant metadata in capabilities
 - Only information that observations available
 - No metadata on what type of observations
- WFS missing important filter criteria
 - Not possible to filter based on observation metadata
 - Not possible to query observations with temporal filter

Which Witch?

So – there's data attached. WCS or SOS?

- Point of View Result/Coverage centric
 - 1st class citizen result
 - 2nd class citizen observation
 - WCS
- Point of View Observation/Methodology
 - 1st class citizen observation
 - 2nd class citizen result
 - SOS

From D2.9 Guidelines for O&M v3.0



S O S

■ ■ ■ ■ ■ ■ ■ ■ ■



SOS – we're using SOS

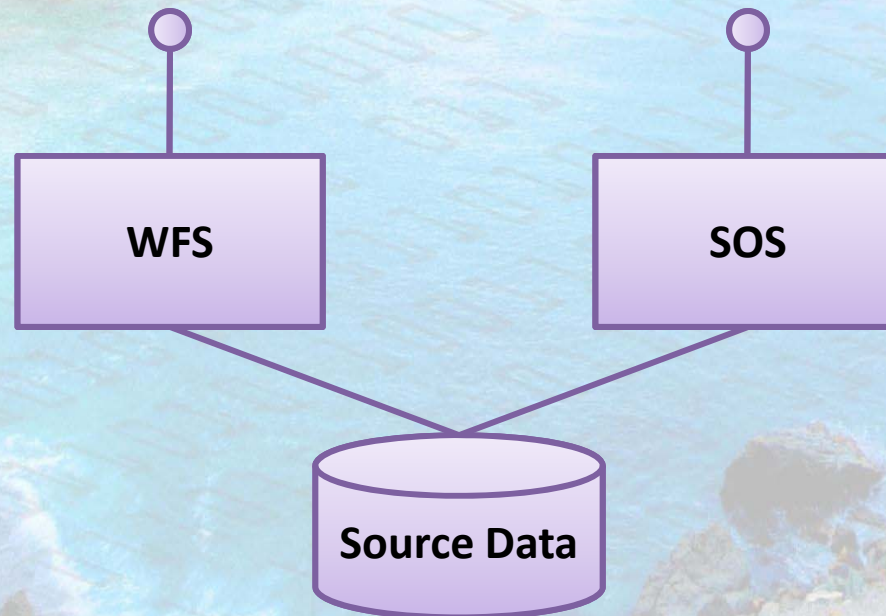
- Now we're coming to the fine line – what part of the data goes where.
- Problem: there's an overlap:

WFS	Object	SOS
GetFeature	Object being measured	GetFeatureOfInterest
GetFeature	Measurement process	DescribeSensor
GetFeature	Result	GetObservation

SOS – we're using SOS

Overlap solution 1 – native DB

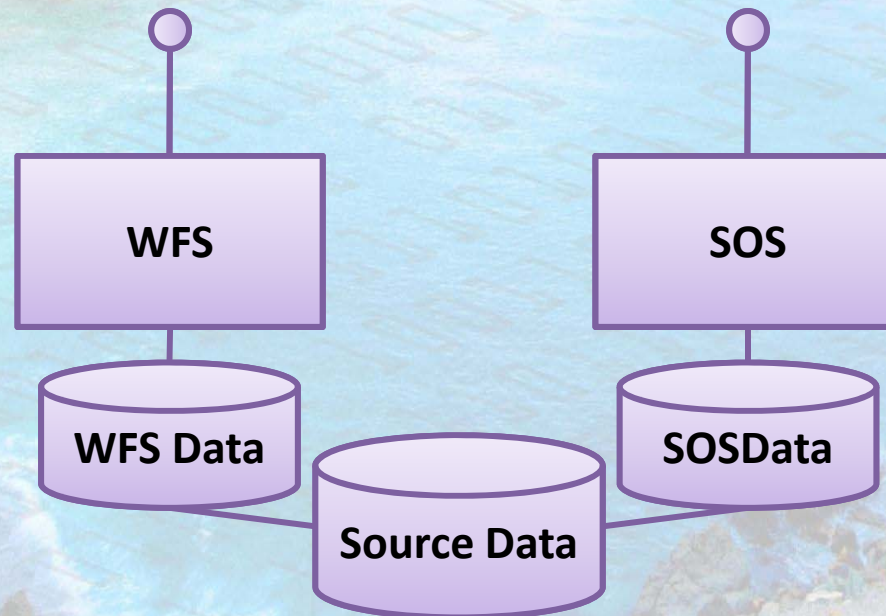
Problems: Complex configuration of servers to native data model



SOS – we're using SOS

Overlap solution 2 – dedicated service DB

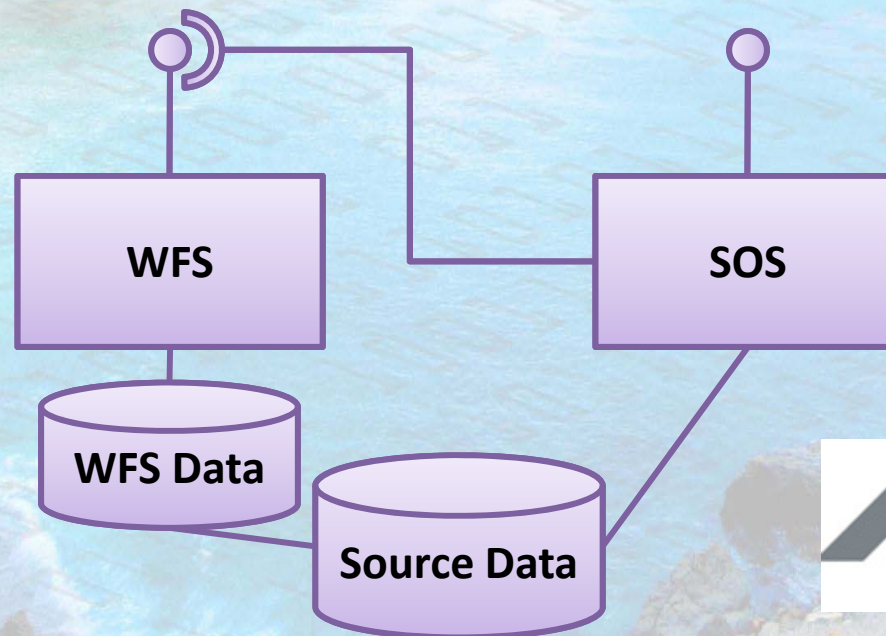
Problems: Danger of inconsistency between WFS and SOS response



SOS – we're using SOS

Overlap solution 3 - cooperation

describeSensor and getFeatureOfInterest
queried from WFS



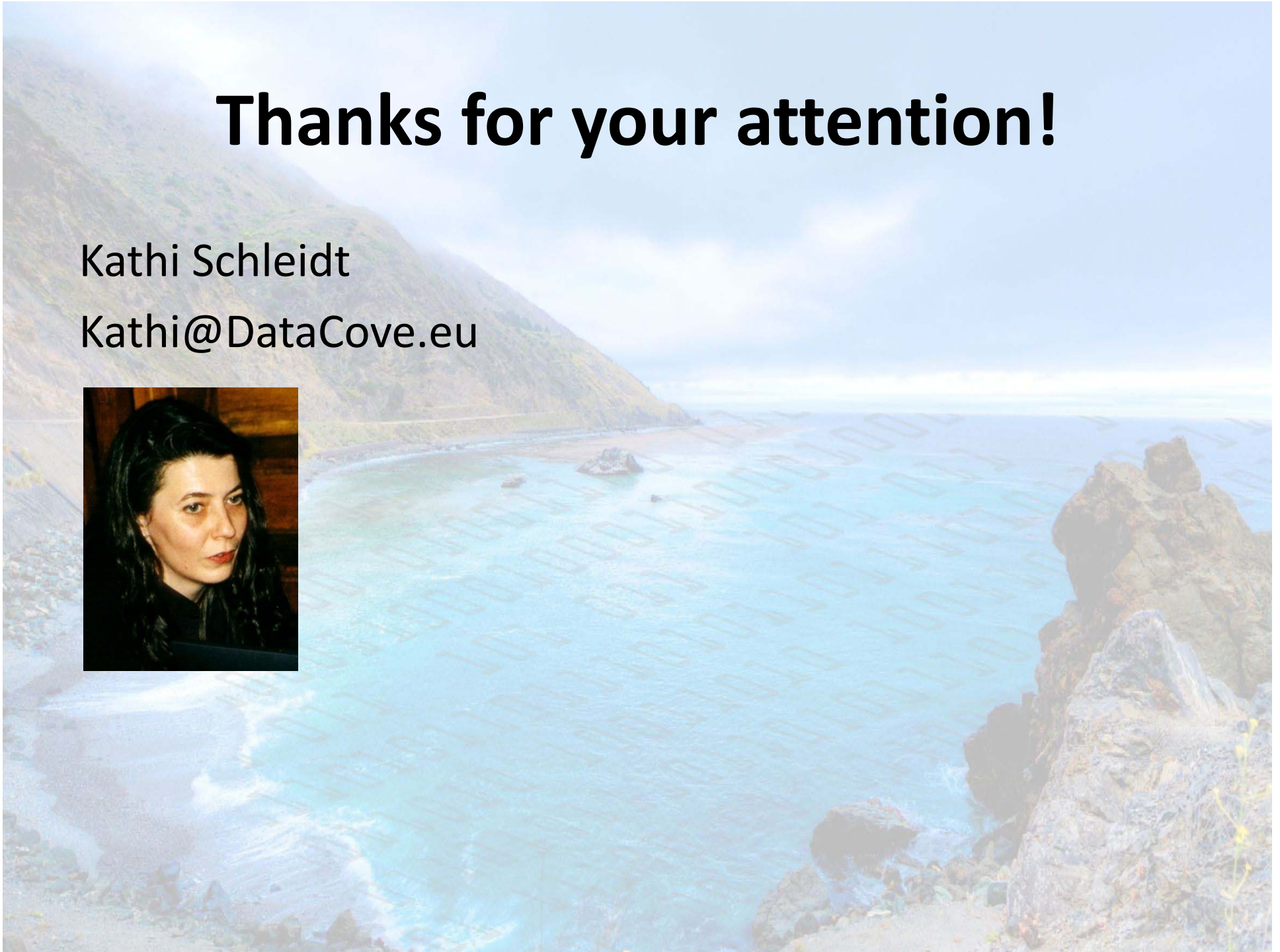
Conclusions

- SOS is a viable solution for INSPIRE download services, especially for those cases where measurement metadata is relevant.
- As with all INSPIRE download services, the devil is in the details.
- More work will be required, but we're getting there!

Thanks for your attention!

Kathi Schleidt

Kathi@DataCove.eu



AT AQD SOS URIs

<http://luft.umweltbundesamt.at/inspire/sos?service=SOS&version=2.0.0&request=getObservation&offering=urn:anyny/identifier/03/0407/1/1&eventTime=2012-10-11T00:00/2012-10-12T00:00>

<http://luft.umweltbundesamt.at/inspire/sos?service=SOS&version=2.0.0&request=getFeatureOfInterest&featureOfInterest=AT.0008.20.AQ/SAM.10.VOR1.64300.5.2>

<http://luft.umweltbundesamt.at/inspire/sos?service=SOS&version=2.0.0&request=describeSensor>