



# INSPIRE Land Cover and Land Use workshop

## **Opening of the workshop**

Chair: Lena Hallin-Pihlatie, Facilitator of the Land Cover and Land Use Cluster

## **Copernicus Land products on their way towards INSPIRE**

Christian Ansorge, European Environment Agency

## **ELF Land Cover Vector products**

Teemu Saloriutta, National Land Survey of Finland

## **INSPIRE Land Cover GML dataset: validation and use**

Stefania Morrone, Epsilon Italia

## **INSPIRE Planned Land Use as a basis for revising SOSI Planned Land Use**

Morten Borrebaekk, Norwegian Mapping Authority

## **Harmonising regional Land Use Plan data – the Finnish approach**

Lena Hallin-Pihlatie, Finnish Environment Institute

## **Wrap-up and promotion of other LC/LU presentations at the INSPIRE Conference**



**INSPIRE Thematic Clusters**

News Events Categories Clusters More > Log in / Register

Search

► About the INSPIRE Thematic Clusters Platform

► Tag cloud

► INSPIRE on Twitter

Tweets Follow

GEO NEXT @Geonieuws 1 Mar  
Omgevingswet en INSPIRE: In de INSPIRE nieuwsbrief van het IPO gaf Cees Moons een interview over de...  
bit.ly/7M1NYgs #GIS #GEO  
Tweet to @INSPIRE\_EU

INSPIRE Website

INSPIRE FORUM

INSPIRE GeoPortal

INSPIRE Conference 2015

► News

► Thematic Clusters names and themes

► Cross group discussions

# INSPIRE Thematic Cluster on Land Cover and Land Use

Lena Hallin-Pihlatie  
Facilitator

[www.jrc.ec.europa.eu](http://www.jrc.ec.europa.eu)

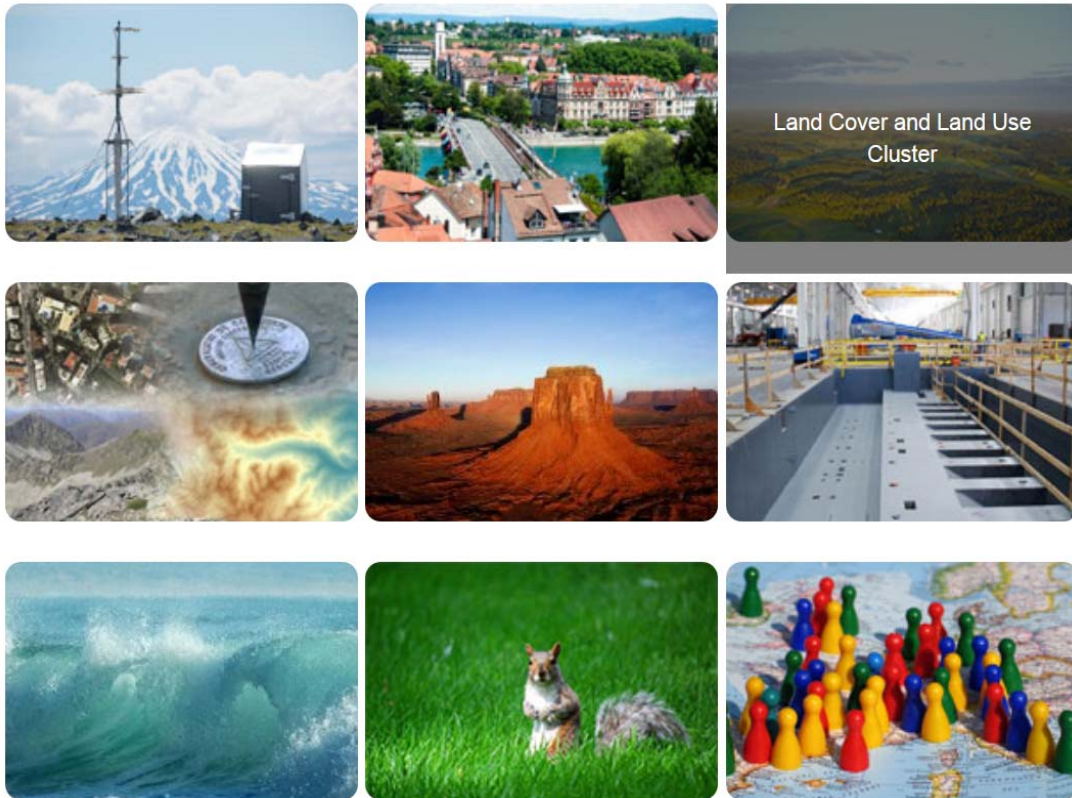
*Serving society  
Stimulating innovation  
Supporting legislation*

INSPIRE Conference 2016  
Barcelona, 27<sup>th</sup> September

Joint  
Research  
Centre

# Thematic Cluster Platform - since 12/2014

Collaborative platform to support thematic communities  
INSPIRE Maintenance and Implementation Framework activity (MIWP14)



Nine thematic clusters

One sub-group per  
INSPIRE theme

Nine facilitators



# Group Statistics

- LC and LU cluster group level  
**125 Members**  
13 Discussion topics  
21 Discussion replies  
**15 Uploaded files**  
**8 Pages**  
**8 News**



- LC sub-group   
48 Members  
**19 Discussion topics**  
**72 Discussion replies**  
2 Uploaded files  
0 Pages  
0 News

- LU sub-group   
39 Members  
8 Discussion topics  
13 Discussion replies  
1 Uploaded file  
14 Pages  
0 News



# INSPIRE Thematic Clusters

- News
- Events
- Pages
- Dashboard
- Clusters
- More »

Groups > Land Cover and Land Use Cluster

## Land Cover and Land Use Cluster

Image Owner Credit



### Description:

This is an open group for people involved and interested in the INSPIRE Land Cover and Land Use. Please use this group for discussions which are common to both themes within the cluster (Land Cover, Land Use). For discussions focused just on one of these themes, please use the sub-groups created for such purpose:



[Land Cover](#)



[Land Use](#)

In order to join the group or related sub-groups please use [the ECAS platform](#) and be logged on to the co

### Access to Cluster's content

- [Group pages](#)
- [Group discussion](#)

Owner: [Lena Hallin-Pihlatie](#)

Group members: 83

[Open group](#)

Account »

## INSPIRE Thematic Clusters

- Notifications
- Settings
- Log out

Groups > Land Cover and Land Use Cluster > Land Cover

## Land Cover

[Join group](#)

Image Owner Credit



### Description:

This is an open sub-group for people (data providers, implementers and users) involved and interested in the INSPIRE **Land Cover theme** - within the INSPIRE Thematic Cluster of Land Cover and Land Use.

Please **use this sub-group** to share resources and have discussions which are specific and focused just on the INSPIRE Land Cover theme.

For cross-thematic activities, which are related both to the Land Cover and the Land Use themes, please use the common [Land Cover and Land Use Cluster group](#) created for such purpose.

Owner: [Lena Hallin-Pihlatie](#)

Group members: 25

[Open group](#)

**Brief description:** Join this sub-group to share your knowledge, learn and collaborate in solving issues related to the Land Cover theme





# Content highlights: Discussion topics

- Discussion topics have helped in documenting and resolving software issues, for example in QGIS and HALE
- Examples of discussion topics
  - How to understand the TG on LC regarding code lists and documentation of the nomenclature?
  - How should Inspire data look like when being according to the LC/LU application schemas?
  - How to name different layers in a WMS to meet the requirements of INSPIRE?
  - How to build WFS using present tools, following the INSPIRE Guidelines?
- Based on Discussion topics a list of Proposals for change have been compiled



# Content highlights:

## Recommended implementation examples

- Sample data
  - **Land Cover Vector GML** [example 1](#) (Best Practice), [example 2](#) and [example 3](#)
  - **Existing Land Use GML** [example](#)
  - **Land Cover Vector ESRI** database template populated with CLC data, ArcGIS for INSPIRE, [example](#)
- Matching tables
  - Filled in Matching tables where **Corine Land Cover** and **Urban Atlas** data have been mapped to Land Cover Vector application schema
- Main sources: EAGLE INSPIRE and eEnvplus projects



# Content highlights: LCLU presentations


- Links to relevant INSPIRE Conference presentations (2013, 2014, 2015)
  1. [Cross-thematic Presentations](#)
  2. [Presentations related to Land Cover](#)
  3. [Presentations related to Land Use](#)
  4. Land Cover workshop held at INSPIRE/GWF 2015, Lisbon
    - » [Link to the presentations from session I](#)
    - » [Links to the presentations from session II \(EAGLE\)](#)



# Content: practical hint

Use tags and categories

- to find information
- to tag and categorise new contents

▼ **Tag cloud**  

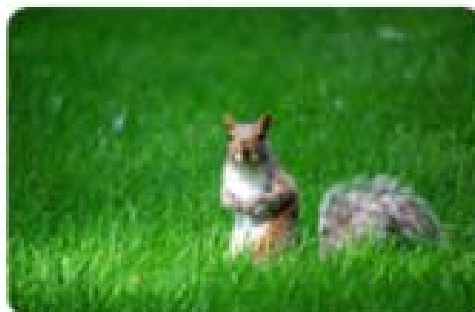
Data model/scope, **land use**, land monitoring, LC, Data provision, Common terminology, **Best Practice**, S/W tools, Member State issues, contact information, transformation, Codelists, cross-group, Evolution - Thematic extensions, **Land cover**, PLU, LU, EU Thematic Databases, Encoding, Political/organisational framework

## Categories

- Land Cover and Land Use Cluster Categories
  - Thematic use case **4**
  - Data model/scope **28**
  - Common terminology **10**
  - Encoding **13**
  - Data quality **0**
  - Evolution - Thematic extensions **8**
  - Portrayal **4**
  - EU Thematic databases **12**
  - S/W tools **14**
  - Member State issues **13**
  - Platform utilisation **0**
  - Political/organisational framework **8**
  - Codelists **11**
  - Best Practice **14**
  - Interoperability **5**
  - Data provision **11**
  - Data used for e-reporting **3**
  - Recommended Implementation Examples **2**

**Welcome to join the TC activity  
to raise and discuss issues of  
importance to you!**

# Questions?





# LCLU presentations coming up

- Planned Land Use
  - **Standardization on Spatial Planning in Turkey: Plan GML** by Fulya Baybas. Wednesday 28.9 10:00 – 10:20 (room H2)
  - **Improved land use planning in 3D** by Tor Gunnar Overli Thursday 29.9 14 – 14:20 (room H1)
  - **A WFS profile for the national urban planning website (Geoportail de l'urbanisme)** by Marie Lambois Friday 30.9 11:15 – 11:35 (room J)
  - **The exchange platform for Flemish spatial zoning plans: the local government challenge** by Peter Willems Friday 30.9 11:15 – 11:35 (room H1)
- Land Cover and Existing Land Use
  - **Open Land Use Map** by Tomas Mildorff Wednesday 28.9 9 – 9:20 (room H1)
  - **Deriving Copernicus land cover and land use data from national datasets following bottom-up approach and INSPIRE data specifications: EAGLE geometric test case** by Julian Delgado Hernandez Wednesday 28.9 14:30 – 14:50 (room J)
  - **Land Cover spatial datasets harmonization in Portugal using HALE** by Ana Luisa Gomes Wednesday 28.9 16:00 – 16:20 (room H2)
  - **Development of Strategic Urban Land Use Analysis Model** by Darko Sisko Thursday 29.9 16:00 – 16:20 (room A)
  - **Deriving INSPIRE compliant land-use maps from open public sector information** by Henning Sten Hansen Thursday 29.9 16:15 – 16:35 (room A)
  - **The EAGLE Concept - Paving the way for a new European Land Monitoring System** by Stephan Arnold Thursday 29.9 17:30 – 17:50 (room A)
- LCLU Cluster member meeting
  - Discussion related to the Thematic Cluster activity, **Thursday 10:30 – 11:00** coffee break, **EC INSPIRE** room