

# Towards a Map of Open SDI/INSPIRE

INSPIRE Conference 2017 – Workshop  
4 September 2017, Kehl (Germany)



# Workshop programme

Part 1:

Different views on Open SDI/INSPIRE

Part 2:

Your view on Open SDI/INSPIRE: discussions

# About us

The screenshot shows the website header for the Knowledge Centre Open Data at Delft University of Technology. The header includes the logo and name on the left, and a navigation menu with links for HOME, NEWS, RESEARCH, EDUCATION, and ABOUT THE KCOD. The main content area features a title, a descriptive paragraph, and four interactive cards for Projects, Publications, Education, and Partners, each with a 'Read More' button.

**KNOWLEDGE CENTRE OPEN DATA**  
Delft University of Technology

HOME NEWS RESEARCH EDUCATION ABOUT THE KCOD

## *Enabling a user-driven, sustainable and fair open data ecosystem*

The Knowledge Centre Open Data of Delft University of Technology focuses on one of the most promising policies promoting the accessibility of data: open data policies. The research focuses on the governance of open data, its societal and economic impact, and the legal restrictions on or conditions for implementing and utilizing open data policies.

- Projects**  
[Read More](#)
- Publications**  
[Read More](#)
- Education**  
[Read More](#)
- Partners**  
[Read More](#)

More information: <http://kcopendata.eu/>

# Part 1

## Different views on Open SDI

Topic of today

# OPEN SDI

# Learning objectives

1. Understand the different components of the Open SDI/INSPIRE concept, i.e. multiple ways of making an SDI/INSPIRE more open
2. Analyse the status of Open SDI/INSPIRE in your own country and in Europe in general
3. Consider examples of best practices of Open SDI/INSPIRE
4. Identify the main challenges in making NSDIs and INSPIRE more open

# Things to think about during this workshop

1. Open, HOW? *In which sense?*
2. Open, TO WHOM? *Citizens, businesses, academics, other actors?*
3. Open, WHY? *Who benefits?*

# Open SDI = a new generation of SDIs?

1<sup>st</sup> generation SDI: producer driven

2<sup>nd</sup> generation SDI: user driven

3<sup>rd</sup> generation SDI: producer driven

4<sup>th</sup> generation: open SDI?



# And the most open SDI is...

*What do you think?*

**1** Grab your phone

**2** Go to [www.menti.com](http://www.menti.com)

**3** Enter the code 48 29 56 and vote!

<https://www.mentimeter.com>

# Open SDI

= open spatial (government) data?

Government data shall be considered open if it is made public in a way that complies with the principles below:

1. [Complete](#)  
*All public data is made available. Public data is data that is not subject to valid privacy, security or privilege limitations.*
2. [Primary](#)  
*Data is as collected at the source, with the highest possible level of granularity, not in aggregate or modified forms.*
3. [Timely](#)  
*Data is made available as quickly as necessary to preserve the value of the data.*
4. [Accessible](#)  
*Data is available to the widest range of users for the widest range of purposes.*
5. [Machine processable](#)  
*Data is reasonably structured to allow automated processing.*
6. [Non-discriminatory](#)  
*Data is available to anyone, with no requirement of registration.*
7. [Non-proprietary](#)  
*Data is available in a format over which no entity has exclusive control.*
8. [License-free](#)  
*Data is not subject to any copyright, patent, trademark or trade secret regulation. Reasonable privacy, security and privilege restrictions may be allowed.*

Compliance must be *reviewable*.

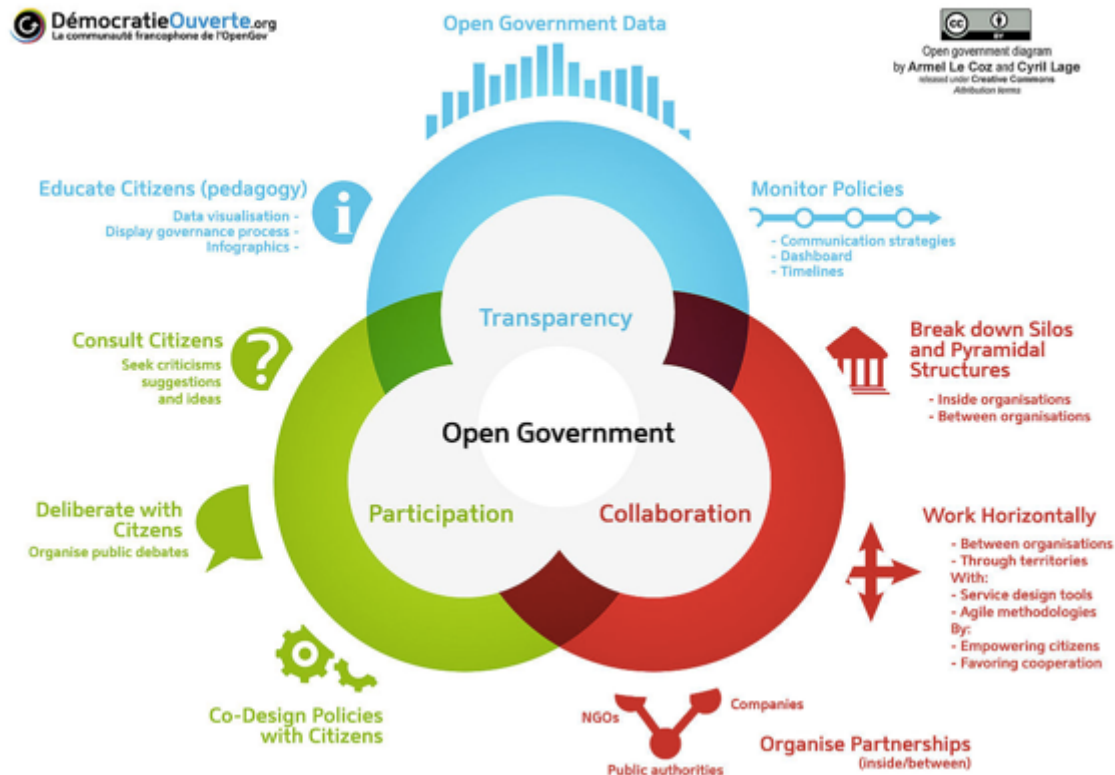
# Open SDI

= building the infrastructure  
in an open manner?

Open implementation  
+  
Open governance

# Open SDI

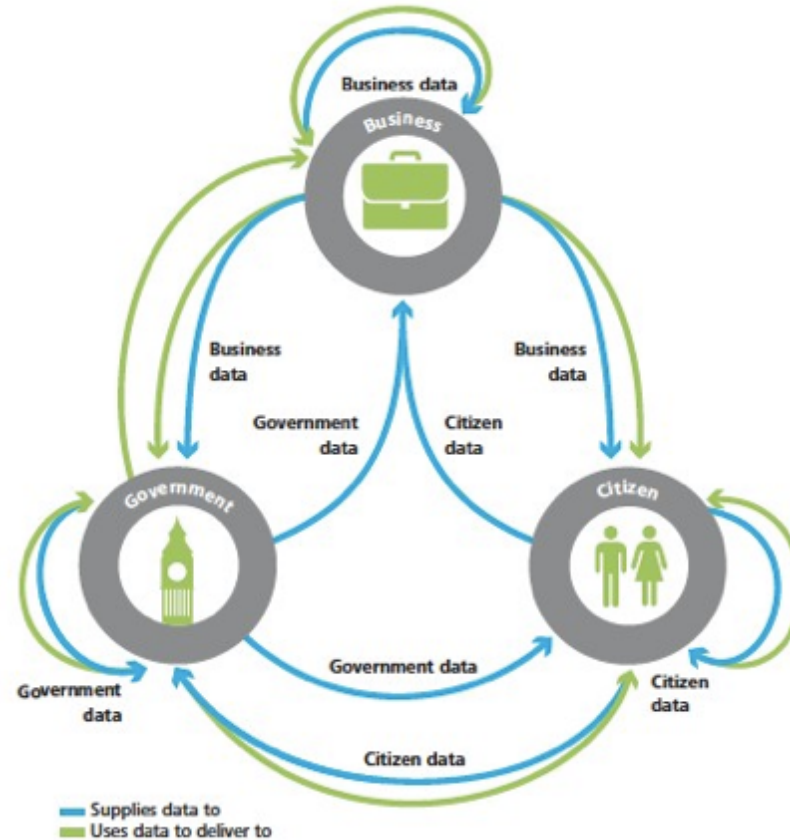
= open –spatially-enabled –government?



Source: Le Coz & Lage

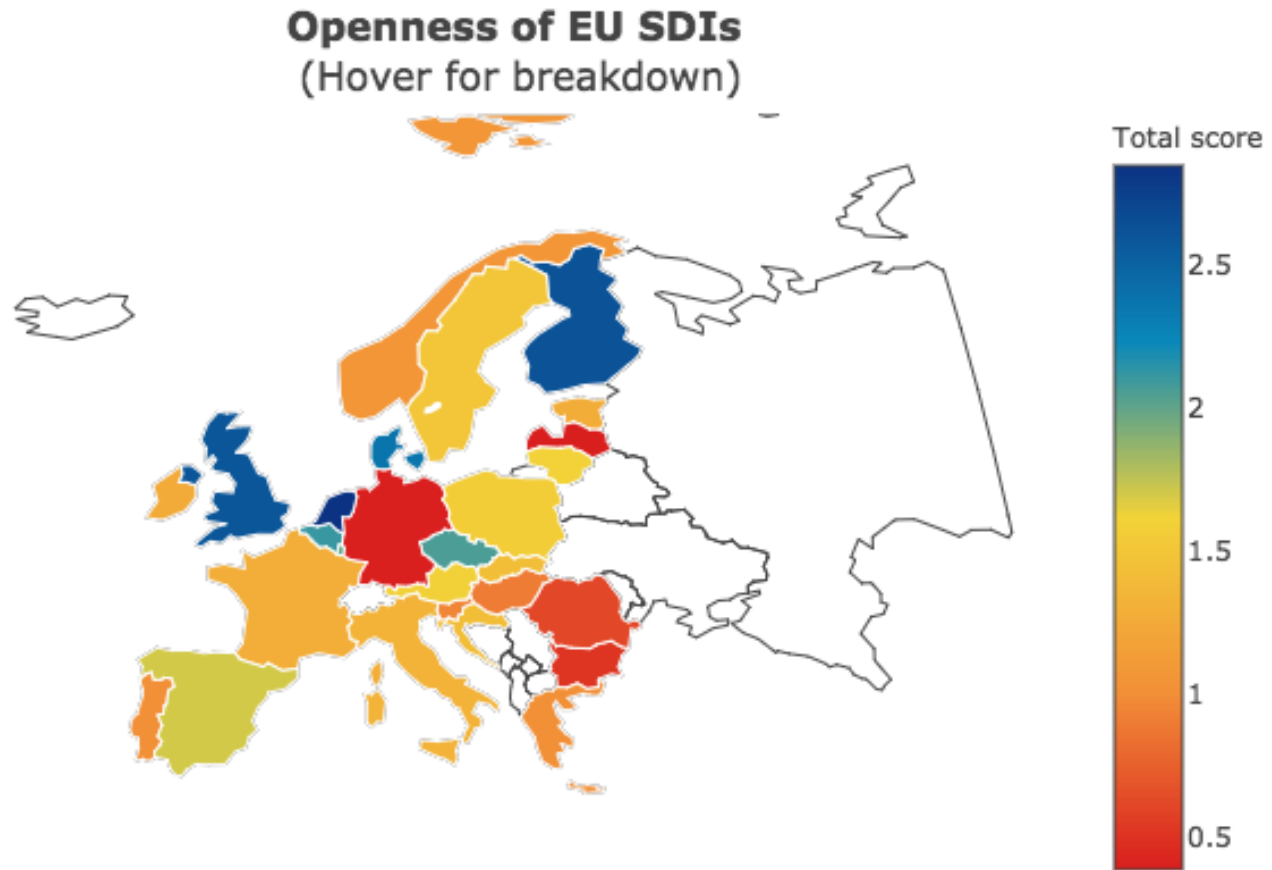
# Open SDI

= creating an open spatial data ecosystem?



Source: Deloitte, 2012

# And the most open SDI is...



# Programme of today

## Part 1: Introduction and experts' views:

- A Finnish perspective – Jaana Mäkelä (Spatineo)
- An SME perspective – Giacomo Martirano (SmeSpire/Epsilon Italia)
- A technological perspective – Francisco J. Lopez-Pellicer (Universidad Zaragoza)
- *Intermezzo: let's test!*
- Our Map of Open SDI/INSPIRE

## *Break*

## Part 2: Your view on Open SDI/INSPIRE

- Discussion in smaller groups
- What do you think about Open SDI?