

kadaster



**The Netherlands: How do
you tackle a thorough
reform of an existing
national data model:
Organisational aspects and
implementation strategies**

INSPIRE 2018

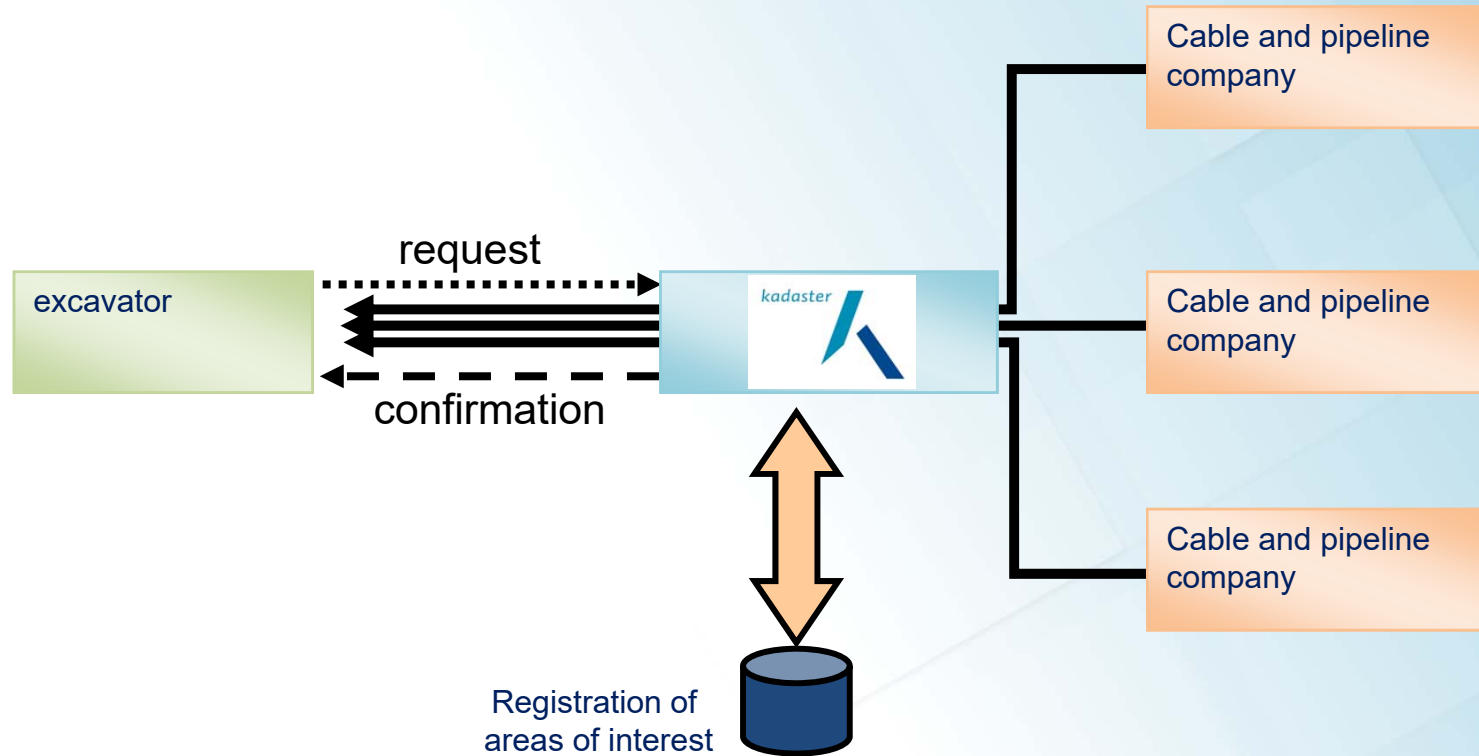
September 19, 2018

Caroline Groot MSc

Cadastre, Land Registry and Mapping Agency

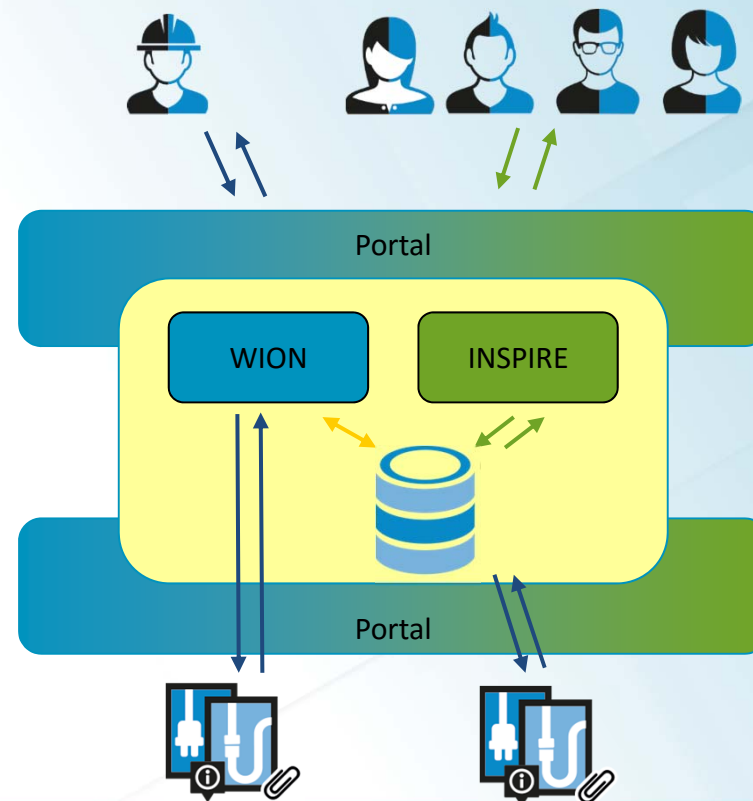
kadaster

Portal for Electronic Exchange of Information



Architecture

- Maximum area per request/restricted area's
- Identification
- New information model & message protocol



Information 2008-2018



Klicnummer: 12O003662 - 1	Aanvraagdatum: 26-01-2012	Bladzijde 1 van 9
Verzamelkaart (alle thema's)		
KPN dalatransport	bw water	Ziggo BV dalatransport
Erexis gas hoge druk	Erexis laagspanning	Erexis middenspanning
Erexis gas lage druk	epoostenhout riool vrijverval	

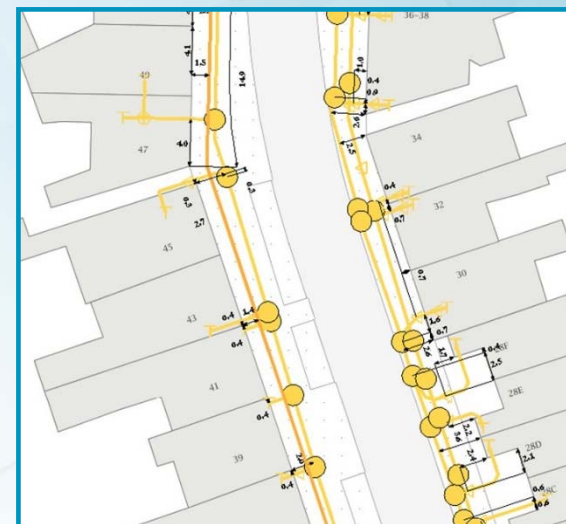
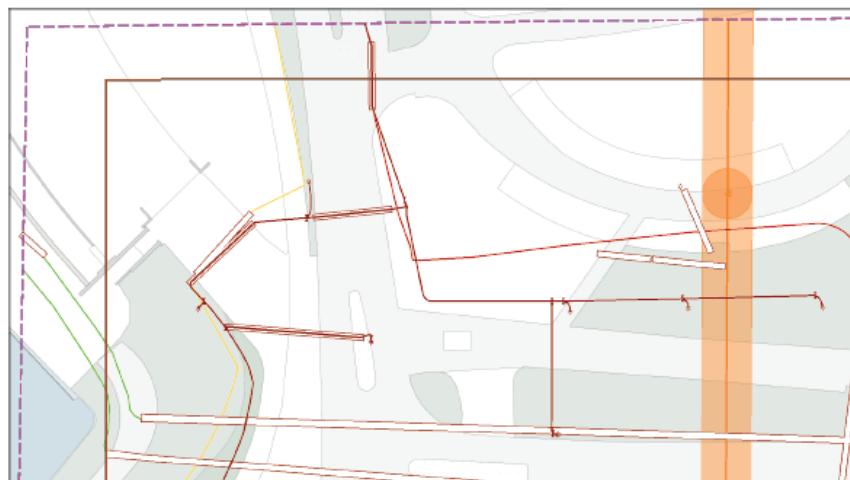


Theme:			
Gas low pressure	Or/Yellow	255,215,80	
Gas high pressure	Or/Yellow	255,175,60	
(Petro)chemical	Brown	182,74,0	
Sewer reg.flow	Purple	186,56,168	
Sewer w/pressure	Violet	128,0,128	
Warmth	Green/Bleu	0,128,128	
Water	Bleu	0,0,255	
Wees	Black	0,0,0	
Other	Black	0,0,0	

Information 2019



Klĳn-meidnĳn: 980986386/10 1RC00083 - 1 / Aanvraagdatum: 08-09-2018	
Verzamekaart (alle thema's)	
	Verzamelde kadastrale gegevens
	Verzamelde kadastrale gegevens
	Verzamelde kadastrale gegevens
	Verzamelde kadastrale gegevens
	Verzamelde kadastrale gegevens
	Verzamelde kadastrale gegevens
	Verzamelde kadastrale gegevens



Organisational aspects

Technical Commission Standards:

- Information model
- Message protocol
- Presentation model

Workgroup sessions on location

Digital consultation

Organisational aspects

Joined workgroups based on relevant stakeholders

Information model > users + data providers

Presentation model > users + data providers

Message protocol > data providers / software agencies

Representatives

Existing governance model

- strategic
- tactical
- technical level

Representatives per sector + new specialists

Implementation strategy

Also a workgroup for implementation strategy.

Focus data providers:

- No big bang moment for data providers (1080!)
- Update model max once a year.

Focus users:

- Dual period: Maximum period of ½ year
- Need for new viewers at the start of the dual period!
- Want to see benefits from the beginning of the dual period

Role of Kadaster and Ministry

Kadaster:

- Intermediary in process
- Management & coordination of changes
- IT development
- Customer services for all



Ministry of Economic Affairs:

- Use of new model
- Length of implementation period
- Enforcement is regulated



Ministerie van Economische Zaken
en Klimaat

Important conditions for successful implementation

- Same goal: prevent damage
- Co-operation sector-wide
- Standards (information models)
- Governance model
- Legislation
- Preparation and implementation period

