

INSPIRE conference – 17-21 September 2018

FAQ about Core Data and INSPIRE

François Chirié, Dominique Laurent, IGN France



UN-GGIM: EUROPE

UNITED NATIONS INITIATIVE ON
GLOBAL GEOSPATIAL
INFORMATION MANAGEMENT



What is core data ?



UN-GGIM: EUROPE

UNITED NATIONS INITIATIVE ON
GLOBAL GEOSPATIAL
INFORMATION MANAGEMENT



What is Core Data?

- An initiative from UN-GGIM: Europe
 - United Nations initiative on Global Geographic Information Management
 - Working Group on Core data
- Objectives : Define Core Data and encourage UN European Member States to produce and supply it



UN-GGIM: EUROPE

UNITED NATIONS INITIATIVE ON
GLOBAL GEOSPATIAL
INFORMATION MANAGEMENT



What is Core Data?

- Core data is **priority data**
 - Geospatial data
 - The most useful to analyse, achieve or monitor the SDGs
 - Sustainable Development Goals
 - Directly or indirectly



UN-GGIM: EUROPE
UNITED NATIONS INITIATIVE ON
GLOBAL GEOSPATIAL
INFORMATION MANAGEMENT



Core data themes

Annex I

Coordinate Reference Systems

Geographical Grid Systems

Geographical Names

Administrative Units

Addresses

Cadastral Parcels

Transport Networks

Hydrography

Protected Sites

Annex II

Elevation

Land Cover

OrthoImagery

Geology

Annex III

Statistical units

Buildings

Soil

Land use

Human health and safety

Utility and governmental services

Environmental monitoring facilities

Production and industrial facilities

Agricultural and aquaculture facilities

Population distribution - demography

Area management/restriction/regulation

Natural risk zones

Atmospheric conditions

Meteorological geographical features

Oceanographic geographical features

Sea regions

Bio-geographical regions

Habitats and biotopes

Species distribution

Energy resources

Mineral resources

**We already have INSPIRE.
Why core data ?**



UN-GGIM: EUROPE

UNITED NATIONS INITIATIVE ON
GLOBAL GEOSPATIAL
INFORMATION MANAGEMENT



We already have INSPIRE

- INSPIRE is about **harmonisation of existing data**
 - Common (exchange) model
 - Ensures interoperability at European level
- **Still heterogeneous content**
 - No scale
 - Most attributes are voidable

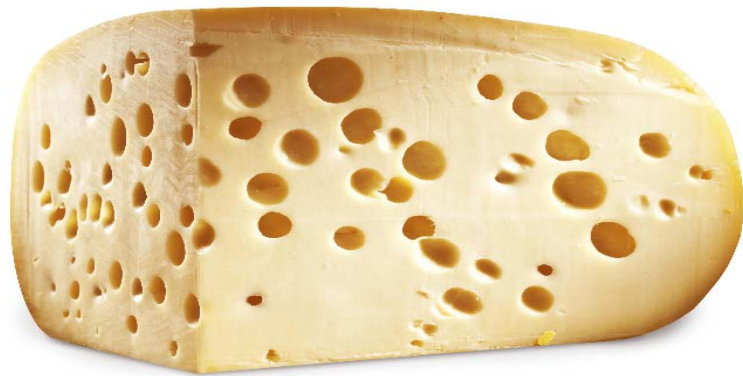


UN-GGIM: EUROPE

UNITED NATIONS INITIATIVE ON
GLOBAL GEOSPATIAL
INFORMATION MANAGEMENT



INSPIRE and core data



The INSPIRE big cheese
with lots of holes



Users begin to complain:
not so much to eat!



The core data cheese:
smaller but compact
and really filled



UN-GGIM: EUROPE

UNITED NATIONS INITIATIVE ON
GLOBAL GEOSPATIAL
INFORMATION MANAGEMENT



Why core data?

- Core data is about
 - encouraging **production of new data** (or upgrade of existing data)
 - Common requirements → common (minimum) content
 - Defining priorities for this production or upgrade

INSPIRE:
STRUCTURE

CORE DATA:
CONTENT



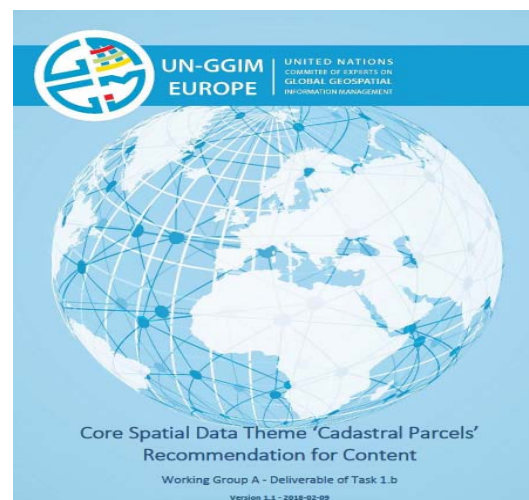
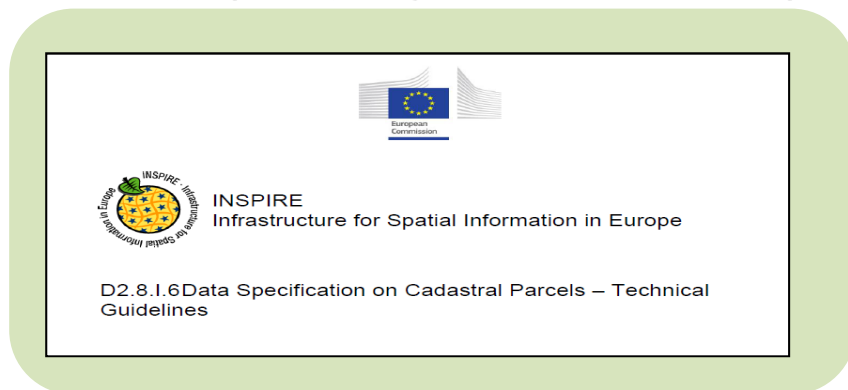
UN-GGIM: EUROPE

UNITED NATIONS INITIATIVE ON
GLOBAL GEOSPATIAL
INFORMATION MANAGEMENT



What is common with INSPIRE?

What is different?



UN-GGIM: EUROPE

UNITED NATIONS INITIATIVE ON
GLOBAL GEOSPATIAL
INFORMATION MANAGEMENT



Why commonalities?

- INSPIRE data specifications used as starting point
 - **Common understanding**
 - Well-known data vocabulary
 - Data models provide **candidate** core feature types and attributes

- Mainly for vector data



UN-GGIM: EUROPE

UNITED NATIONS INITIATIVE ON
GLOBAL GEOSPATIAL
INFORMATION MANAGEMENT



Why differences?

- INSPIRE is about **delivery of interoperable data**
 - Large data models
 - Hardly no other recommendations about data content
 - Overlaps, duplication between themes
- Core data is about **production of priority content**
 - Selection of key features and attributes
 - Recommendations on LOD, quality, geographic coverage, ...
 - Capture data only in one theme



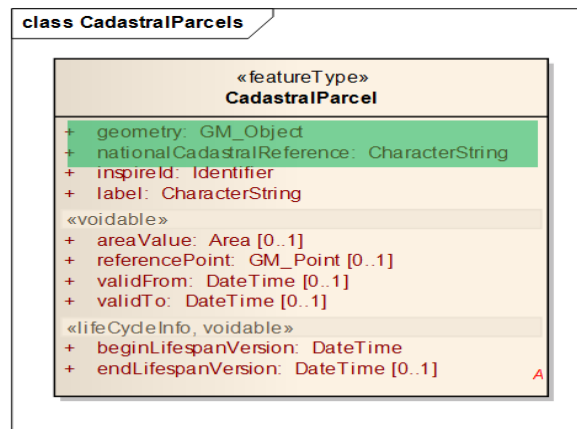
UN-GGIM: EUROPE

UNITED NATIONS INITIATIVE ON
GLOBAL GEOSPATIAL
INFORMATION MANAGEMENT



Case 1: Cadastral Parcels

- Extracting priority features and attributes from INSPIRE data model



UN-GGIM: EUROPE

UNITED NATIONS INITIATIVE ON
GLOBAL GEOSPATIAL
INFORMATION MANAGEMENT



Case 1: Cadastral Parcels

- Other content components – Adding quality recommendations:
 - Encourage cadastral parcels forming a partition of territory
 - Geographic extent: whole (land) territory
 - Cadastration of public domain encouraged



UN-GGIM: EUROPE

UNITED NATIONS INITIATIVE ON
GLOBAL GEOSPATIAL
INFORMATION MANAGEMENT

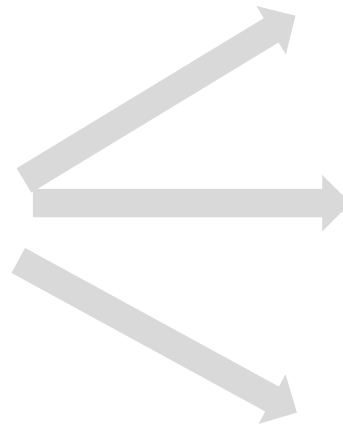


Case 2: Hydrography

- Avoiding duplication

Core data

Linear
Watercourse



INSPIRE

HY Physical Waters
Watercourse

HY Hydro network
WatercourseLink

HY Hydro network
InlandWaterway



UN-GGIM: EUROPE

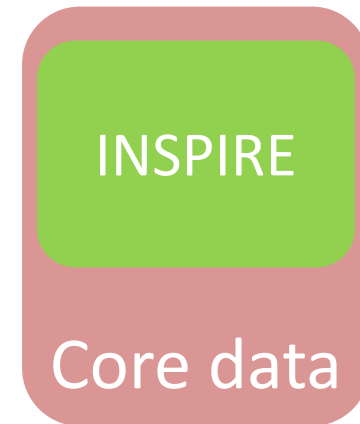
UNITED NATIONS INITIATIVE ON
GLOBAL GEOSPATIAL
INFORMATION MANAGEMENT



Why differences?

- **Different Universes of Discourse**

- INSPIRE: environment
 - Policies having impact on environment
- Core data : sustainable development
 - Environment
 - Economy
 - Society



Wider scope



UN-GGIM: EUROPE

UNITED NATIONS INITIATIVE ON
GLOBAL GEOSPATIAL
INFORMATION MANAGEMENT



Case 3: Basic Services

Administrative and social governmental services (INSPIRE)



Focus on environment related services

A limited code list (for serviceType) e.g. Leisure excluded

Basic Services (Core data)



Driven by SDG

An extended code list (for serviceType) e.g. leisure included

| «codeList» BasicServiceTypeValue | |
|-------------------------------------|---------------------------------|
| + | 1.energySupplyFacility |
| + | 1.1.nuclearPowerPlant |
| + | 1.2.thermicPowerPlant |
| + | 1.3.hydro-electicPowerPlant |
| + | 2.wasteManagementFacility |
| + | 2.1.disposalSiteOrLandfill |
| + | 2.2.wasteTreatmentPlant |
| + | 2.3.wasteWaterTreatmentPlant |
| + | 3.1.preprimarySchool |
| + | 3.2.primarySchool |
| + | 3.3.secondarySchool |
| + | 3.3.tertiarySchool |
| + | 3.4.otherSchool |
| + | 4.healthService |
| + | 4.1.hospital |
| + | 4.2.emergencyMedicalService |
| + | 5.safetyService |
| + | 5.1.policeStation |
| + | 5.2.fireStation |
| + | 5.3.rescueStation |
| + | 5.4.civilProtectionSite |
| + | 5.5.courtOrTribunal |
| + | 5.6.prison |
| + | 6.defenceSite |
| + | 7.recreationService |
| + | 7.1.sportFacility |
| + | 7.2.campingSite |
| + | 7.3.publicPark |
| + | 7.4.zoo |
| + | 7.5.library |
| + | 7.6.culturalCentre |
| + | 7.7.recreationPark |
| + | 7.8.concertHall |
| + | 7.9.theatre |
| + | 7.10.opera |
| + | 8.governmentService |
| + | 8.1.townHall |
| + | 8.2.embassy |
| + | 9.socialService |
| + | 9.1.residenceForElders |
| + | 9.2.residenceForDisabledPersons |
| + | 9.3.cemetery |
| + | 10.economicService |
| + | 10.1.postOffice |



What about core data implementation?



UN-GGIM: EUROPE

UNITED NATIONS INITIATIVE ON
GLOBAL GEOSPATIAL
INFORMATION MANAGEMENT



Status of core data

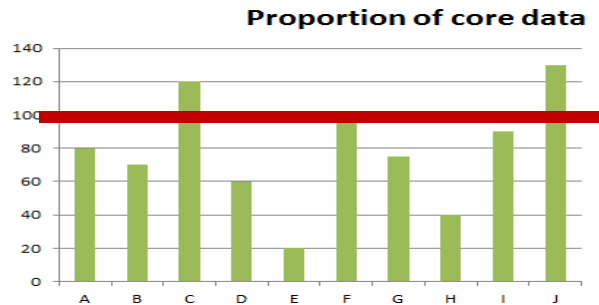
- UN-GGIM: Europe WG provides only “**recommendations** for content”
 - => no legal obligation
- Why would governments and data producers decide to produce core data? *



**We apply INSPIRE because it is mandatory*

What about implementation of core data?

- Core data is already (partly) available



- Core data is (mainly) about enhancing existing data.
- Efforts to implement core data will depend on themes and on countries.
- Core data is desirable minimum content; some countries may have more or better data.



Core data is about filling the (main) gaps.

What about implementation of core data?

- Support from data producers
 - Because of **relevant recommendations!**
 - Pushed by WG A through review process and communication
- Encouraged by users
 - **Interest of statistical community**
 - **Interest of European Commission as priority data (CP, BU, AU, SU, AD, TN)**
- Potential input to future versions of EuroGeographics **Core Reference Data**
 - First version limited to TN and HY for CLC Backbone
 - Next versions might include more core themes

We support the Core recommendations: either they are implemented or are useful to be implemented in the future - Lithuania (Review on CP)



UN-GGIM
UNITED NATIONS INITIATIVE ON
GLOBAL GEOSPATIAL
INFORMATION MANAGEMENT

Thank you for your attention

For more details:

<http://un-ggim-europe.org/content/wg-a-core-data>



UN-GGIM: EUROPE

UNITED NATIONS INITIATIVE ON
GLOBAL GEOSPATIAL
INFORMATION MANAGEMENT

