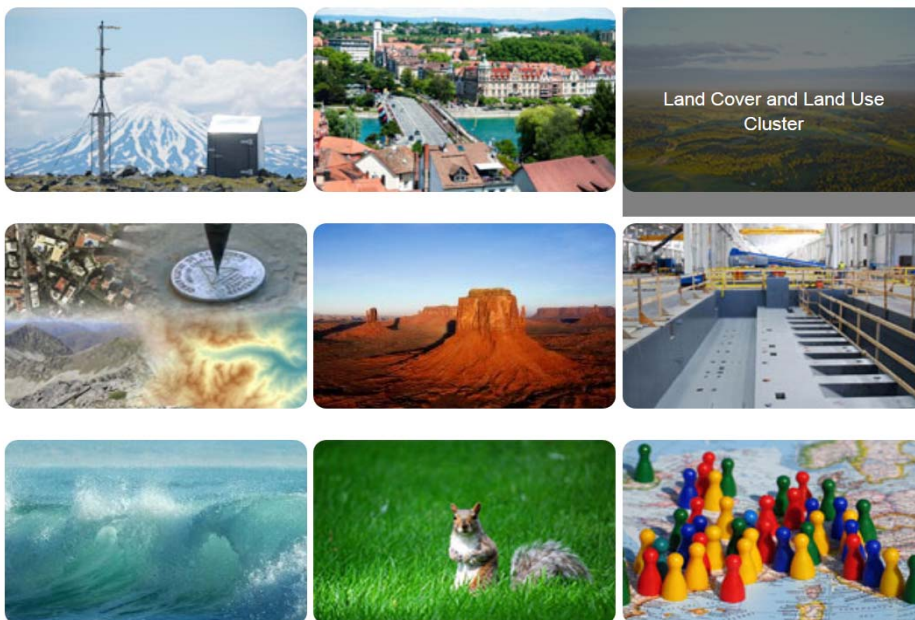


Topical issues in the INSPIRE Land Cover and Land Use Thematic Cluster



[Lena Hallin-Pihlatie](#)

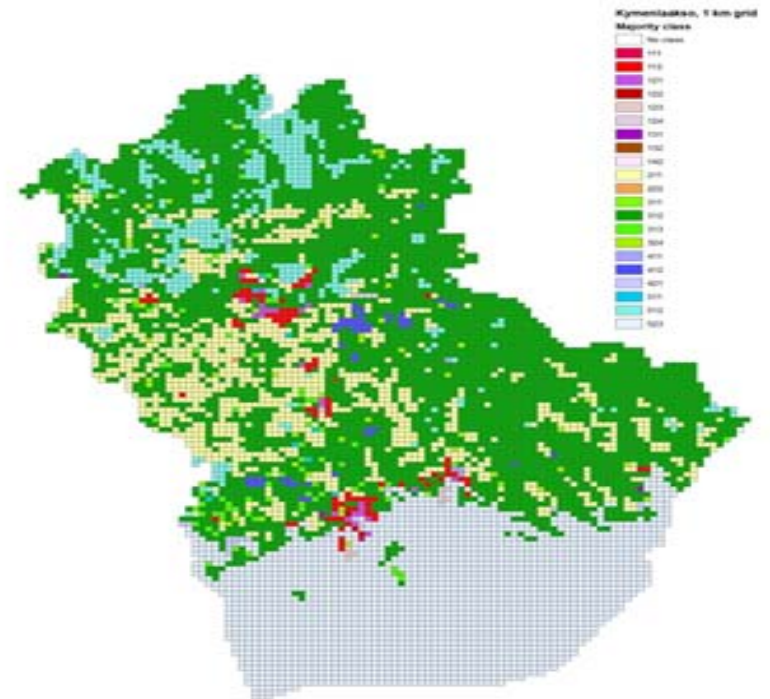
Facilitator of the Land Cover and Land
Use INSPIRE Thematic Cluster

www.jrc.ec.europa.eu

*Serving society
Stimulating innovation
Supporting legislation*

Outline

- TC LC/LU content highlights
- Recent events
 - Land Use/Land Cover Products: Challenges and Opportunities workshop 15 November 2017
 - Standards in Action workshop 30 May 2018



Content highlights

- Examples of view and download services providing datasets according to INSPIRE LC/LU data specifications
 - Dedicated page:
<https://themes.jrc.ec.europa.eu/pages/view/117401/examples-of-inspire-view-and-download-services-for-the-inspire-land-cover-and-land-use-themes>
- Sample LC/LU GMLs
 - Land Cover Vector
 - Existing Land Use
 - Planned Land Use



Land Use/Land Cover Products: Challenges and Opportunities workshop

- Organised by INSPIRE KEN (Knowledge Exchange Network) of EuroGeographics, EuroSDR, the INSPIRE Thematic Cluster on LC/LU and EEA on 15 November 2017 in Brussels
 - ~50 participants
 - <https://eurogeographics.org/calendar-event/land-use-land-cover-products-challenges-and-opportunities/>
- The Copernicus Land CLC+ User Consultation organized by DG GROW took place in Brussels the following day

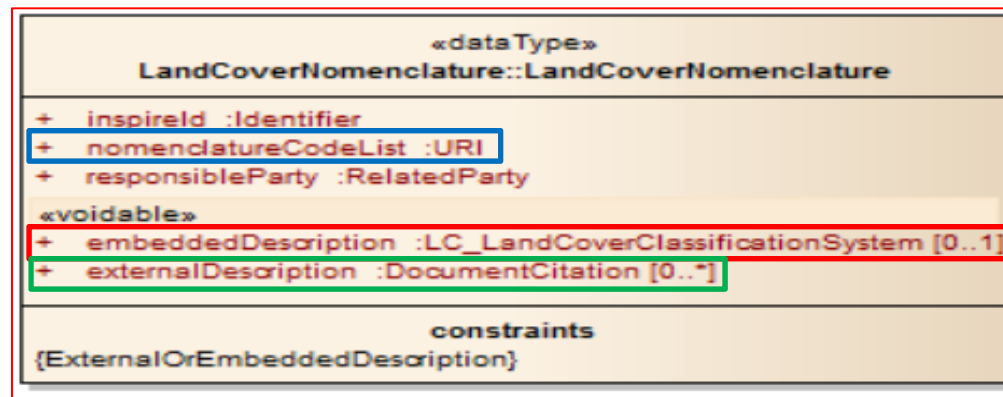


Workshop findings

- A clear trend for separation of land use and land use concepts, using different technical solutions:
 - separate products
 - same product with two layers sharing same geometry and update cycle
- Clear support for the revision of ISO 19144-2 Land Cover Meta Language (LCML) standard
 - to meet the needs of INSPIRE
 - to possibly also to align the standard with the EAGLE concept differentiating between Land Cover and Land Use

The needs of INSPIRE towards LCML

- Need for an official LCML schema to point to from the embeddedDescription attribute
 - To know what structure the LC class description in the GML should have
 - Validation purpose
 - To be able to compare and re-use LC class definitions in a machine-to-machine way





Standards in action workshop in May

- Part of the ISO/TC 211 meeting in Copenhagen
- 3 h Land Cover workshop covering
 - Global needs, INSPIRE needs and EAGLE opportunities related to ISO LCML 19144-2
- Decisions taken at ISO plenary
 - Resolution 887 – Revision of ISO LCML 19144-2 will be initiated after the Project 0 (Resolution 888) is finished.
Resolution 888 – Invitation of FAO to initiate a project 0
- Call for participants for the stage 0 project on Land Cover and Land Use open until 10.10.2018