



INSPIRE Conference 2018
Inspire Users: Make it work together



We have compliant
datasets! Now what?

INSPIRE TRIATHLON

AGENDA

- Why do we want INSPIRE compliant datasets?
- Access of data
- Working with data



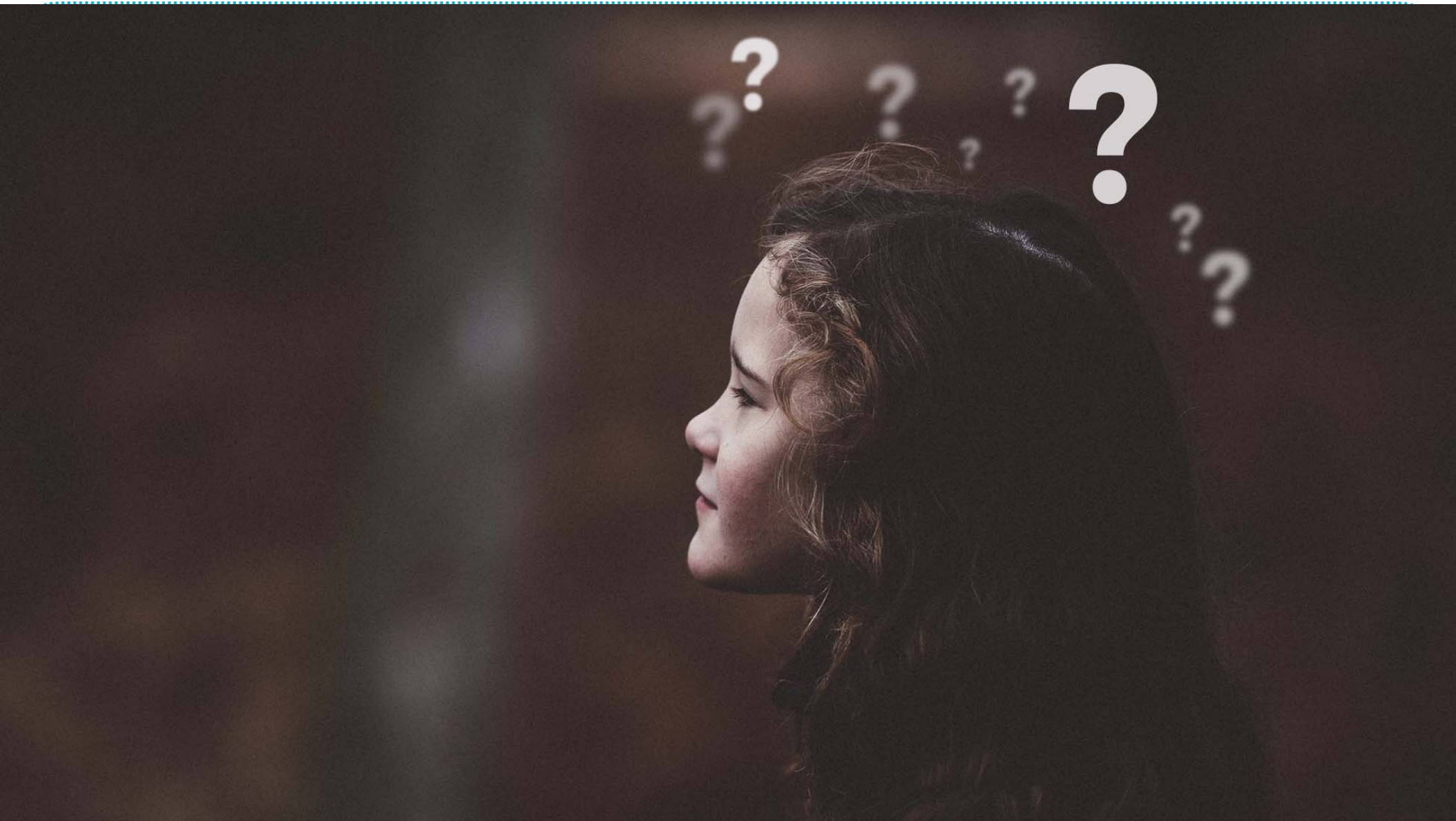
INSPIRE MARATHON (2007-2020)



Why do we want to be INSPIRE compliant?

Is it a Marathon or a Triathlon?







Follow the rules
Create metadata
Create catalogs
Transform data
Publish data and services
Make all interoperable



Cascade services
Automatic updates
Develop tools
Join datasets
Combine datasets
Automate processes

Improve Europe's Environment
Save lives

Ud. Está aquí
You are here
Vous êtes ici





- ✓ Climate
- ✓ Elevations
- ✓ Buildings
- ✓ Hydrography



ACCESS OF DATA

- Lack of availability
- Authentication systems
- Web applications
- Direct download (FTP, ATOM, Direct Link, Emails)
- Download Service (WFS)



WORKING WITH DATA

- Missing features
- Scale not always work
- Understanding local knowledge
- Organization of datasets
- Versions of schemas



WORKING WITH DATA

- Data types (codes)
- Borders
- Licensing, licensing, licensing
- And GML, of course...



Thank you!, and
don't forget to think
about what comes
after INSPIRE



Alejandro.guinea@Geograma.com