



INSPIRE Conference 2017



GeoRhena

A cross-border GIS for the
Upper Rhine



Der Oberrhein wächst zusammen, mit jedem Projekt
Dépasser les frontières : projet après projet
INTERREG V OBERRHEIN | RHIN SUPÉRIEUR



Von der EU kofinanziert: Europäischer
Fonds für regionale Entwicklung (EFRE)
Cofinancé par l'UE: Fonds Européen de
Développement Régional (FEDER)

Upper Rhine ?



- 3 countries: F / D / CH
- 2 languages
- Area: 21,527 km²
- Population: 6.1 million
- GDP: 245 billion €

Upper Rhine Conference : Institutional framework for cross-border cooperation in the Upper Rhine region



12 Working groups :

- Environment
- Regional planning
- Climate and Energy
- Public health
- ...

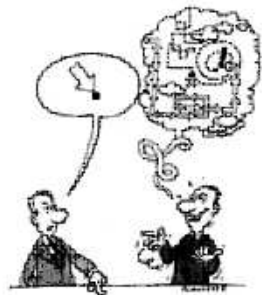
Needs & Obstacles ?

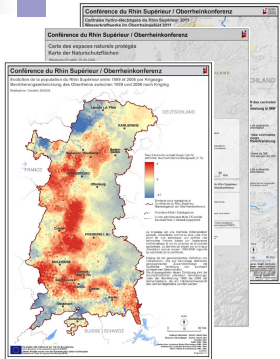
Needs

Cross-broder GeoData & maps

Obstacles

Several languages and working methods,
GeoData spread beyond borders and institutions,
GeoData have different structures, reliability level, update degrees, scales,
formats, projection systems...





GeoRhena ?

Common cross-border thematic GeoData

Production of cross-border maps

Exists since 2004

Best practice exchange

Competence center



GeoRhena

SDI



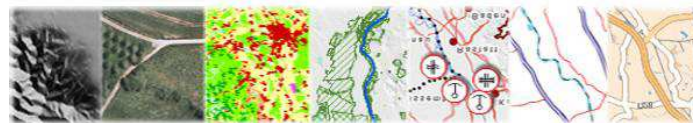
Geomatic network



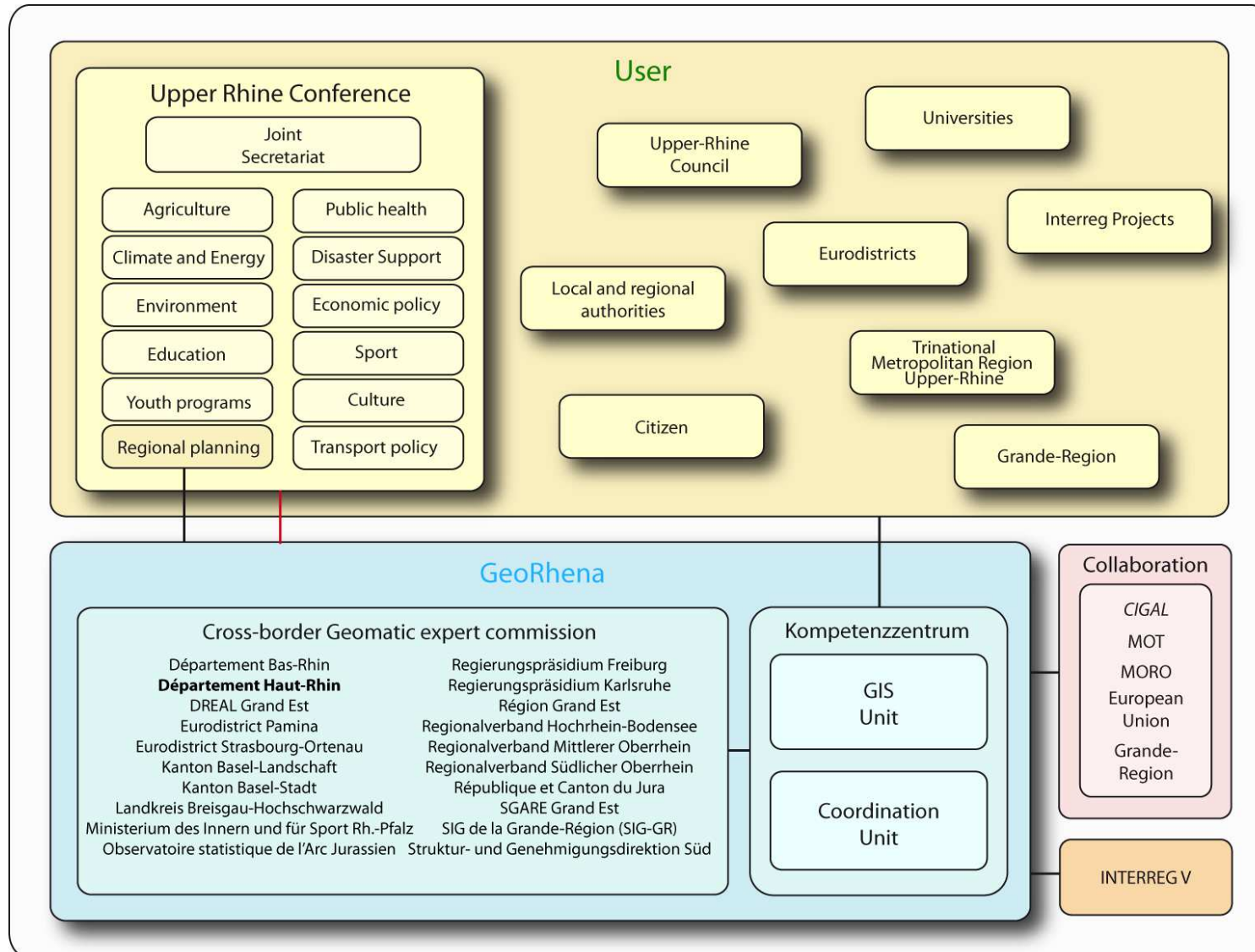
Interreg V

Cross-border expert commission

INSPIRE



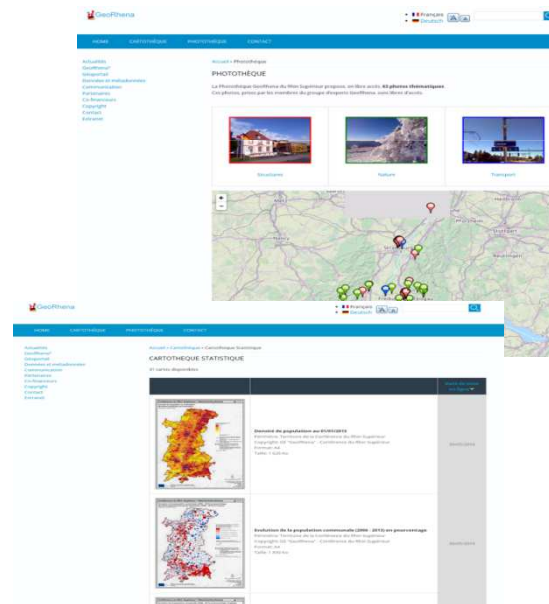
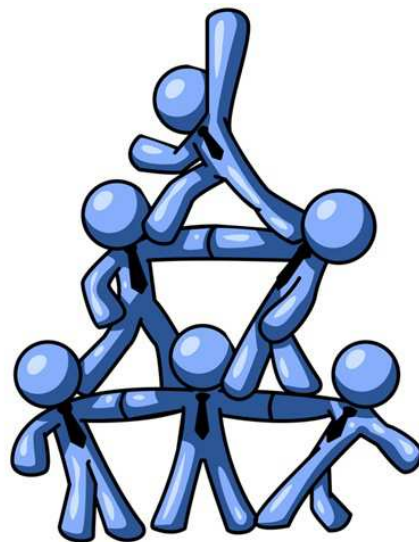
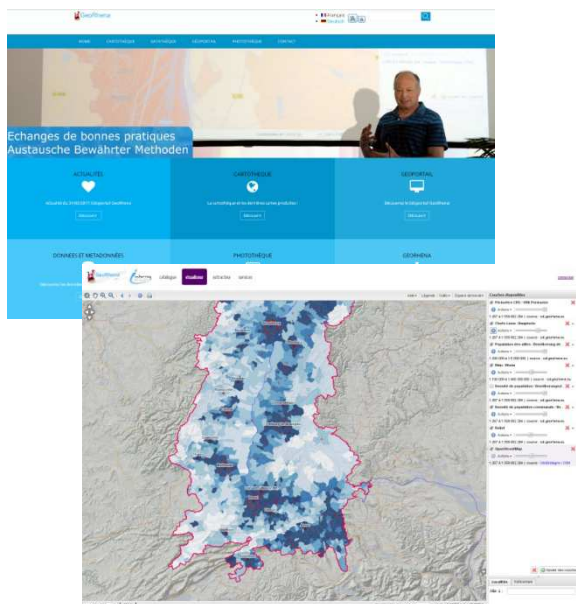
Working Process ?





GeoRhena

Human Cross-Border Geomatic network



www.georhena.eu
<https://sdi.georhena.eu>

