

Going behind the European requirements by establishing authentic sources

François Du Mortier

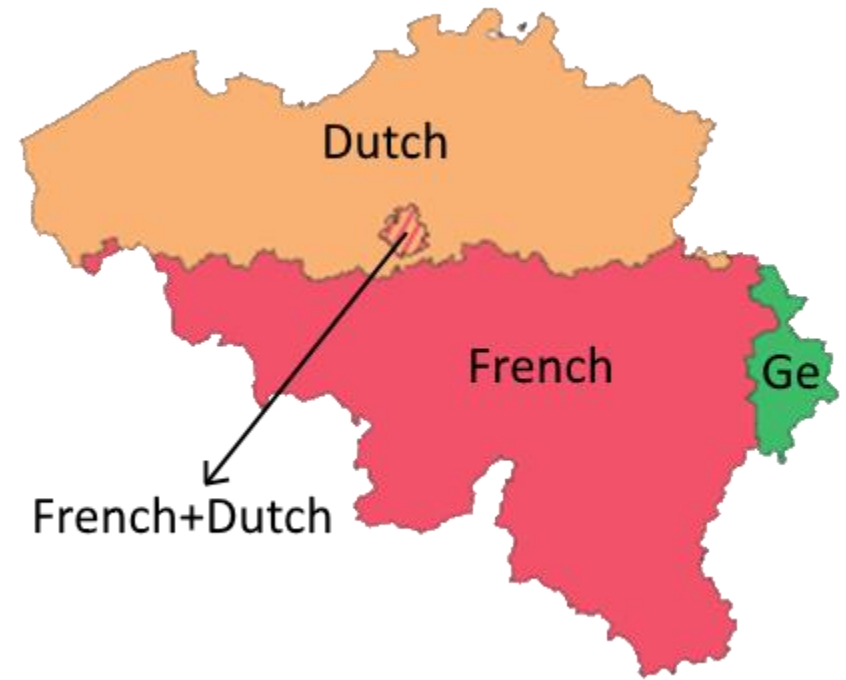
Chairman of the Belgian INSPIRE Coordination Committee



Belgium Federal Structure



Federal state + 3 Regions



+ 3 Communities

Data Sets Needing Coordination



Annex	Themes	No Data	Coordination needed						No coordination needed
			2R	3R	F+1R	F+2R	F+3R	Total	
I	9	1				1	7	8	1
II	4					1	3	4	0
III	21	2	4	1	2	1	4	12	9
Total	34	3	4	1	2	3	14	24	10

Other Generic EU Requirements

Unique identifiers

Belgian INSPIRE compliant CRS

Hierarchy between some data sets

Cross-border objects

Other environment-related reports based on geodata

Resulting Legal Provisions



Federal state: law

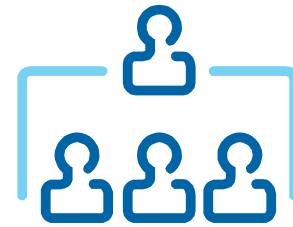
Wallonia: decree

Flanders: decree

Brussels capital: ordinance

+Cooperation Agreement

Belgian Cooperation Agreement



4 Parties: Federal + 3 Regions

Forum: discussion, exchange of views

Coordination Committee

Supported by a cell (mainly secretariat)

Composed of

2 experts/party (environment, geographical)

Member State Contact Point (MSCP)

Forum chairman

Cell director

Tasks:

Negotiate and select the reference data sets

Set up a common INSPIRE Belgian portal

Lay down common terms

access, use, exchange, license, fee

Manage relationship with EC

Progress reports

Assess feasibility and cost of EC measures

Addresses Workgroups outcomes



Address definition and data model

Distinct cooperation agreement

Authentic source made of 3 regional data sets

Register available > 01/01/2017

Mandatory use > 01/01/2018

Building Workgroup outcomes



Building unit definition (building subdivision)

Envisage authentic source

based on 3 regional data sets

Strong relationships with addresses

Administrative Units Workgroup State of Play



Scope: cadaster-based hierarchical subdivisions

Country, Region, Province, District, Municipality,
Cadastral Division, Section, Sheets

Target: authentic source

Current focus: country+region borders

Hydrography Workgroup State of Play



Goal:

transform hydrographic data sets into an INSPIRE seamless and compliant data set

How: Workshop planned in September 2017

Scrutinize similar cross-borders initiatives including procedures and tools

Identify/examine existing Belgian data sets

Set up a Belgian methodology

Extend/apply to other cross-border data sets

Thanks for your attention – any questions?

