



INSPIRE Thematic Clusters

- building communities to support
INSPIRE implementation

Robert Tomas

*INSPIRE Thematic clusters coordinator
EC&EEA INSPIRE CT Team*

INSPIRE Conference, Strasbourg; 6th of September 2017

The European Commission's
science and knowledge service
Joint Research Centre





INSPIRE Thematic Clusters - **Why ?**



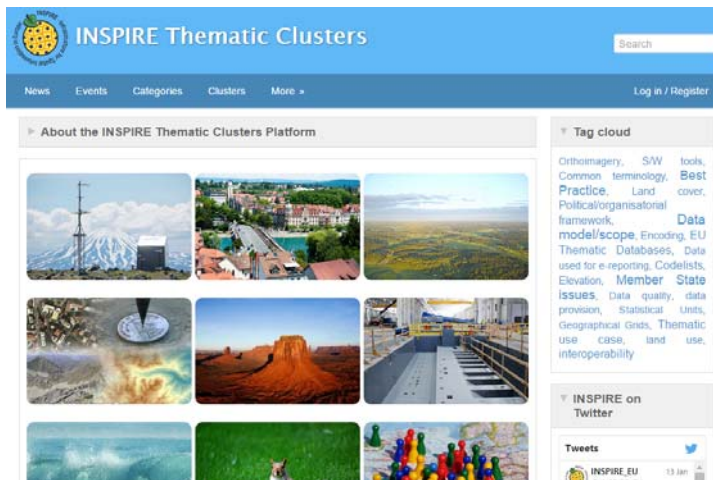
Many INSPIRE implementation issues are domain/theme-specific

- **To facilitate basic data/service interoperability**
 - Data scoping (e.g. extending data models for domain purposes / applications)
 - Common approach to temporal / spatial resolutions; levels of detail / scales..
 - Used parameters (e.g. env. observations/measurements)
 - Used terminology (e.g. filling open and empty code lists),
- **To document agreed approaches and share them across boundaries**
- **To propose collectively changes & additions to INSPIRE technical / legal framework**
- **To discuss links to other environmental policies and reporting obligations**



INSPIRE Thematic clusters – **What?**

Officially launched on **11.12. 2014** as the INSPIRE Thematic user **community collaborative platform**



- **The platform covers 9 Thematic clusters** (aggregate INSPIRE themes)
- **The platform is open to all**
- For active participation (discussions, adding new topics etc.)
ECAS registration needed

Joint
Research
Centre

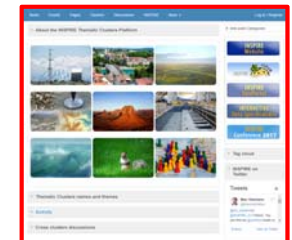
<https://themes.jrc.ec.europa.eu/>



INSPIRE Thematic Clusters - **What ?**

- On-line INSPIRE users **collaborative platform** .. to share
- User's implementation "**knowledge base**" .. to find
- **Incubator for change/addition** proposals .. to propose (e.g. 1st set of corrigenda published end of 2016)
- **Discussion forum** for e.g. links with other environmental policies .. to discuss

Share – Find – Propose - Discuss



Joint
Research
Centre

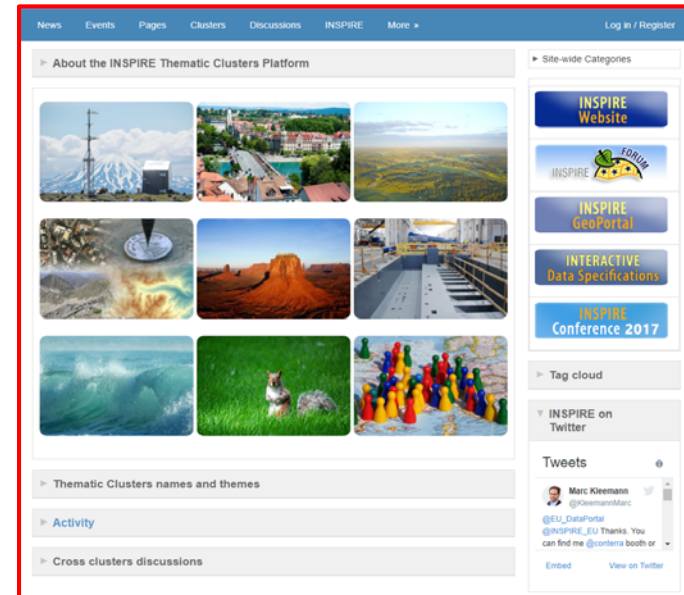
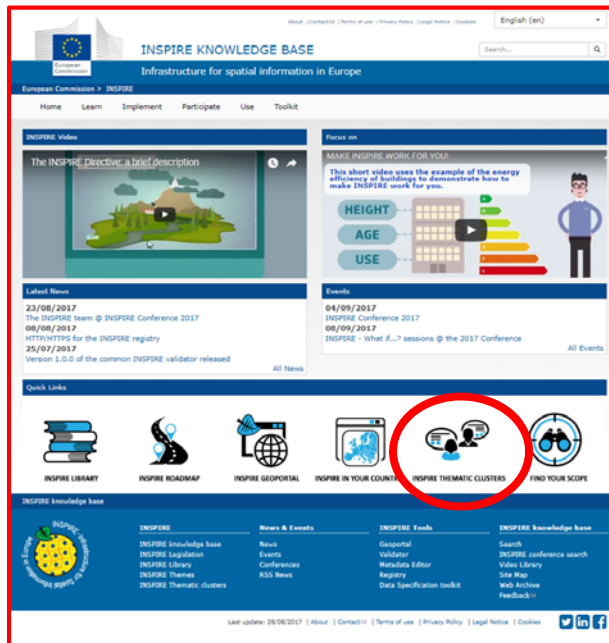
<https://themes.jrc.ec.europa.eu/>



INSPIRE Knowledge base



Thematic Clusters



<http://inspire.ec.europa.eu/>

Joint
Research
Centre

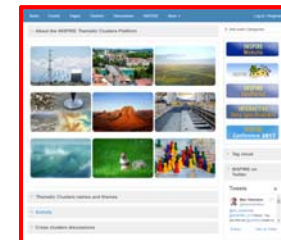
<https://themes.jrc.ec.europa.eu/>



INSPIRE Thematic Clusters – How?

- Coordinated by JRC with the help of 9 Facilitators and MIG Liaisons
- Defined in the endorsed INSPIRE MIG Working Plans:
 - MIWP 2014-2016: Action MIWP14
 - MIWP 2016-2020: Action 2016.4: **Theme specific issues of data specifications & exchange of implementation experiences in thematic domain**

INSPIRE Thematic Clusters	Facilitator	MIG-T Liaison
Topographic and Cadastral Reference Data	Anja Hopfstock	Markus Jobst
Elevation, Orthoimagery, CRS, GRIDS	Jordi Escriu	Markus Seifert
Utilities	Angel Lopez	
Biodiversity & Management Areas	Stefania Morrone	Christian Ansorge
Land Use & Land Cover	Lena HALLIN-PIHLATIE	Lars Erik Storgaard
Marine & Atmosphere	Keiran Millard	Anders Ryden
Env. Mon. Facilities, Observation&Measurments	Katharina Schleidt	Jose Miguel Rubio Iglesias
Statistics and Human Health	Mirosław Migacz	Jari Reini
Earth Science	Tim Duffy - Geology	Carlo Cipolloni



Joint
Research
Centre

<https://themes.jrc.ec.europa.eu/>

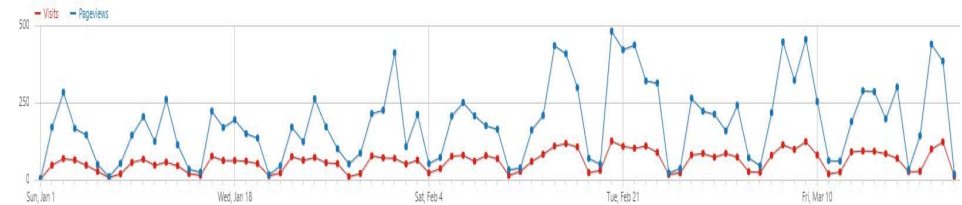
INSPIRE Thematic cluster



Statistics on use

- 815** Registered members
- 50** Groups (groups + sub-groups)
- 581** Discussion topics
- 1488** Responses
- 208** Files uploaded
- 185** Issue/topic dedicated pages created
- 137** News

Visits: from 1-1-2017 until 25-8-2017: **13700**
Pageviews: from 1-1-2017 until 25-8-2017: **38723**



Environmental Monitoring and Observations Cluster

112 members

Statistical and Human Health Cluster

84

Biodiversity and Management Areas Cluster

127

Topographic and Cadastral Reference Data

193

Land Cover and Land Use Cluster

138

Elevation, Orthoimagery, Reference Systems, Geographical Grids

138

Earth Science Cluster

185

Facilities, Utilities and Public Services Cluster

90

Marine and Atmosphere Cluster

97

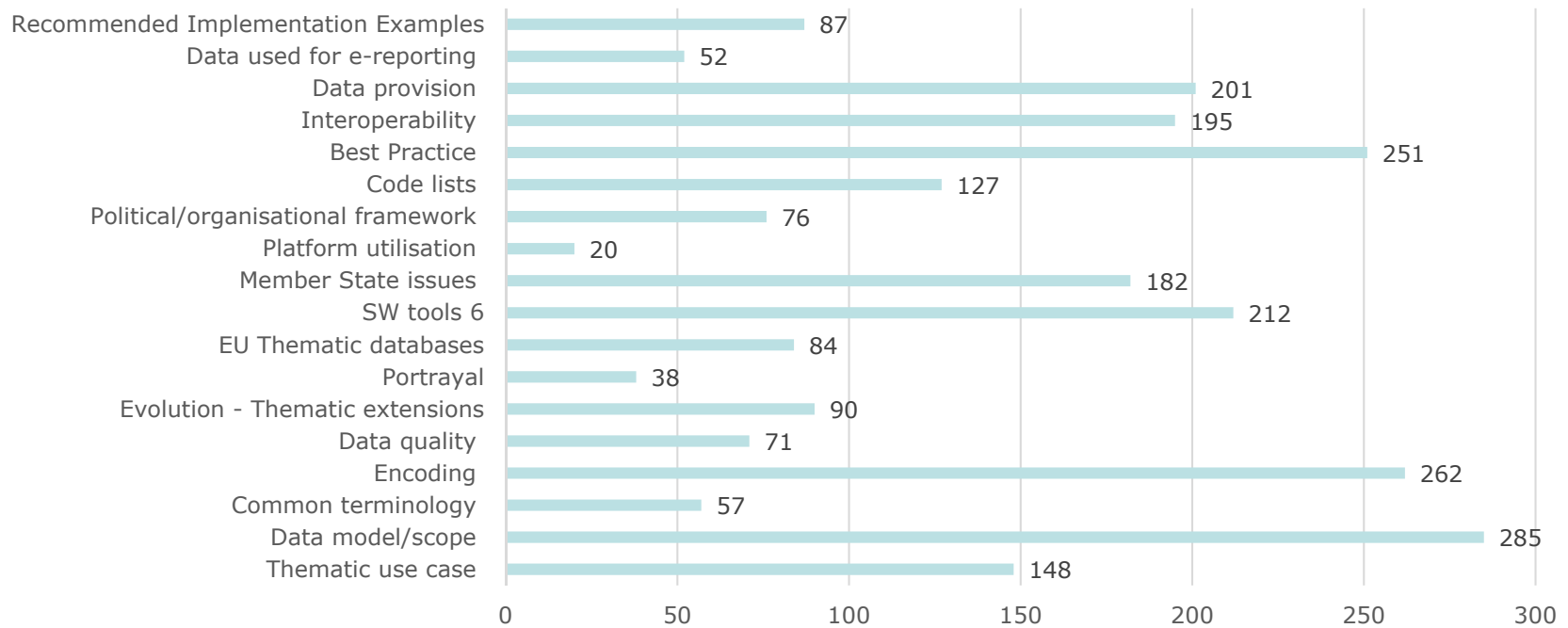
Joint Research Centre

<https://themes.jrc.ec.europa.eu/>





TC Platform-wide content categories - Nr. of assigned items





- Closer **integration with “INSPIRE in Practice” = Reference implementation per each INSPIRE Data Theme** (common description, tools used, links to the end point application /services etc.
- New **system for documenting, status monitoring** of changes/additions proposed.



- Better **involvement = faster response** to published issues from EC&EEA CT, MIG, MIG-T other experts

Joint
Research
Centre



Fear to publish an issue, question,
even a best practice on the EC
managed platform.



Full encouragement to publish
imperfect solutions

**Interoperability is better
achieved**



**...sharing solutions
in a collaborative way**



INSPIRE TC Members meetings during the conference

INSPIRE Thematic Clusters - Meetings with TC Members					
INSPIRE Thematic Clusters	Facilitator	MIG-T Liaison	Meeting date	Meeting time	Room
Topographic and Cadastral Reference Data	Anja Hopfstock	Markus Jobst	Wednesday 6.9.	13.00 - 14.00	
Elevation, Orthoimagery, CRS, GRIDS	Jordi Escriu	Markus Seifert	Wednesday 6.9.	13.00 - 14.00	
Utilities	Angel Lopez		Wednesday 6.9.	15.30 - 16.30	
Biodiversity & Management Areas	Stefania Morrone	Christian Ansorge	Thursday 7.9.	10.30 - 11.30	
Land Use & Land Cover	Lena HALLIN-PIHLATIE	Lars Erik Storgaard	Thursday 7.9.	13.00 - 14.00	
Marine & Atmosphere	Keiran Millard	Anders Ryden	Thursday 7.9.	14.00 - 15.30	
Env. Mon. Facilities, Observation&Measurments	Katharina Schleidt	Jose Miguel Rubio Iglesias	Thursday 7.9.	14.00 - 15.30	
Statistics and Human Health	Mirosław Migacz	Jari Reini	Thursday 7.9.	15.30 - 16.30	
Earth Science	Tim Duffy - Geology	Carlo Cipolloni	Friday 8.9.	13.00 - 14.00	

