



Spatial Information and Land Development

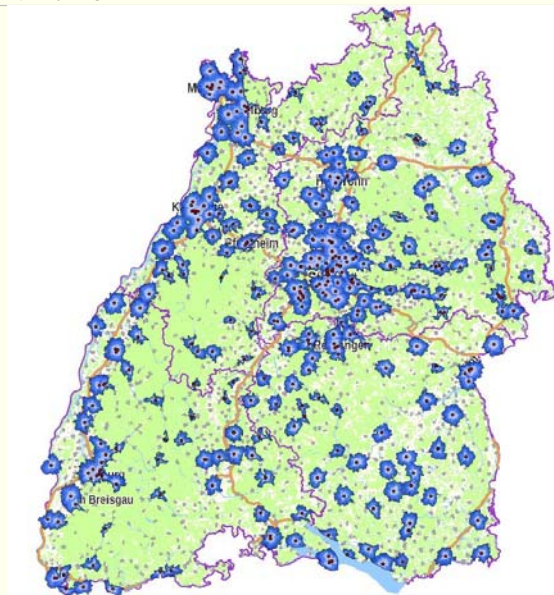
Interdisciplinary usage of INSPIRE

Sonja Haas
State Office for Spatial Information and Land Development Baden-Wuerttemberg
Department 32
2017



Interdisciplinary usage of INSPIRE

“short legs – short ways”
an accessibility analysis



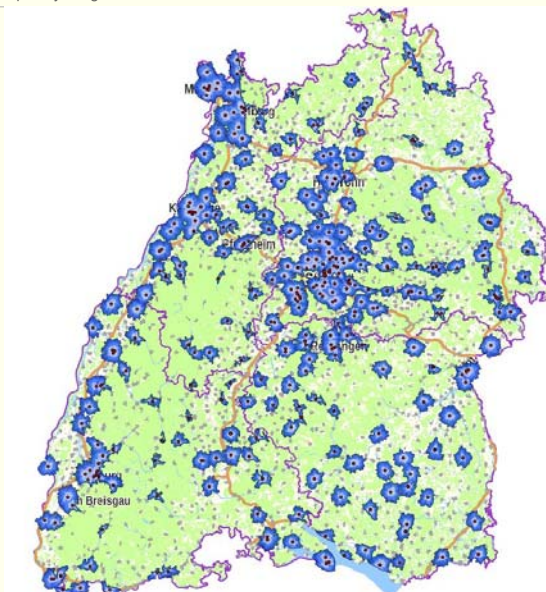
Interdisciplinary usage of INSPIRE

“short legs – short ways”
an accessibility analysis

Any difficulties in particular?



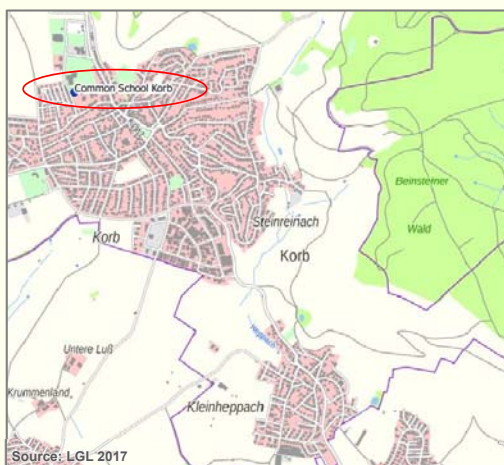
Folie 3.



Baden-Württemberg
LANDESAMT FÜR GEOINFORMATION UND LANDENTWICKLUNG

Interdisciplinary usage of INSPIRE

Data quality - an underestimated factor



Source: LGL 2017



Folie 4.



Baden-Württemberg
LANDESAMT FÜR GEOINFORMATION UND LANDENTWICKLUNG

Interdisciplinary usage of INSPIRE

Data quality - an underestimated factor



Source: LGL 2017



Folie 5.

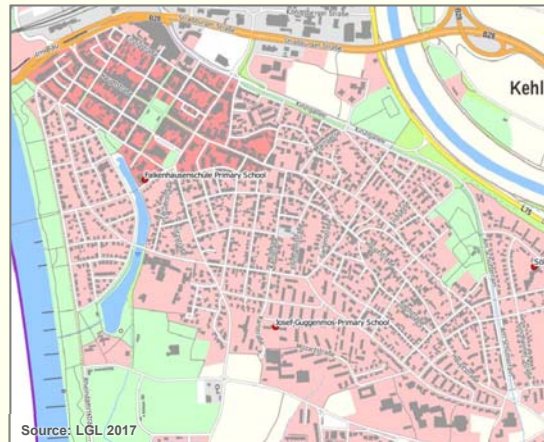


Baden-Württemberg
LANDESAMT FÜR GEOINFORMATION UND LANDENTWICKLUNG

Interdisciplinary usage of INSPIRE

Workflow

- ❖ **Geocoding service**
 - ❖ Quality check
 - ❖ Geocoding API



Source: LGL 2017



Folie 6.



Baden-Württemberg
LANDESAMT FÜR GEOINFORMATION UND LANDENTWICKLUNG

Interdisciplinary usage of INSPIRE

Workflow

- ❖ Geocoding service
 - ❖ Quality check
 - ❖ Geocoding API

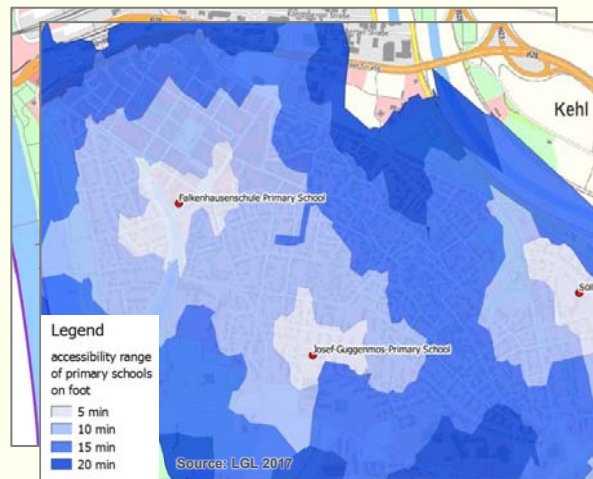
- ❖ **Routing service**

- ❖ Routing API

[https://graphhopper.com/api/
point=48.5708%2C7.81076&
vehicle=foot&time_limit=1200&
buckets=4](https://graphhopper.com/api/?point=48.5708%2C7.81076&vehicle=foot&time_limit=1200&buckets=4)



Folie 7.

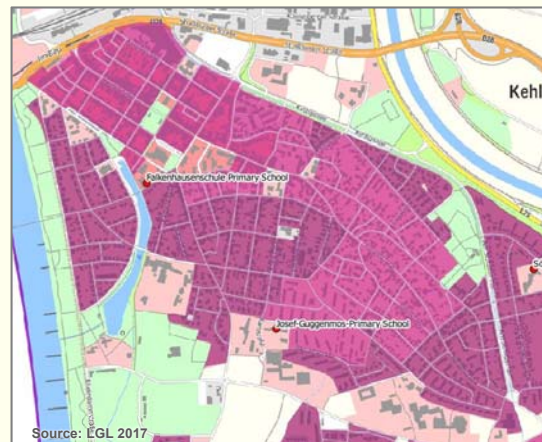


Baden-Württemberg
LANDESAMT FÜR GEOINFORMATION UND LANDENTWICKLUNG

Interdisciplinary usage of INSPIRE

Workflow

- ❖ **Spatial base data service**
 - ❖ WFS
 - ❖ Residential areas



Folie 8.

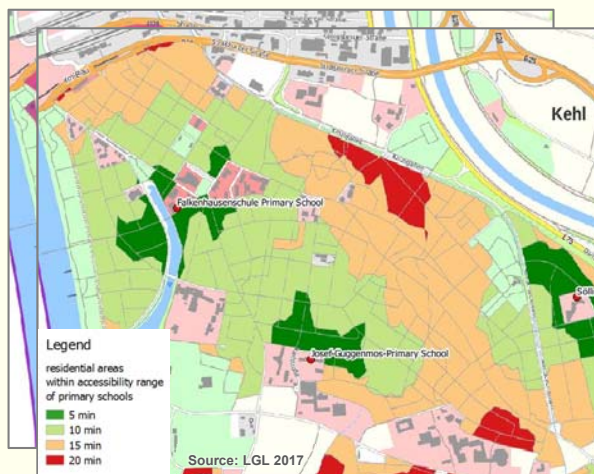


Baden-Württemberg
LANDESAMT FÜR GEOINFORMATION UND LANDENTWICKLUNG

Interdisciplinary usage of INSPIRE

Workflow

- ❖ **Spatial base data service**
- ❖ WFS
- ❖ Residential areas
- ❖ **Data enrichment**



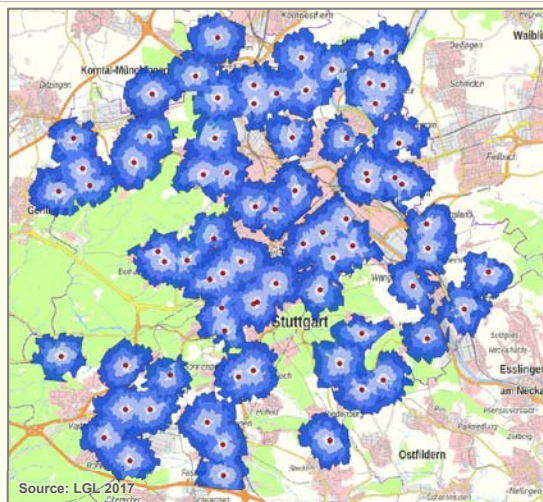
Folie 9,



Interdisciplinary usage of INSPIRE

Results

Accessibility of primary schools on foot in Stuttgart



Folie 10,

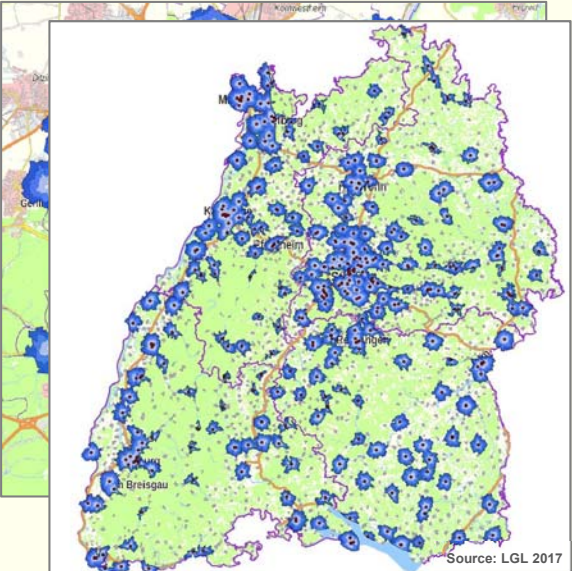


Interdisciplinary usage of INSPIRE


Results

Accessibility of primary schools on foot in Stuttgart

Accessibility of grammar schools by bicycle



Baden-Württemberg
LANDESAMT FÜR GEONFORMATION UND LANDENTWICKLUNG



www.lgl-bw.de


Folie 11.

Interdisciplinary usage of INSPIRE


INSPIRE

“With a view to stimulating the development of added-value services by third parties, for the benefit of both public authorities and the public, it is necessary to facilitate access to spatial data that extend over administrative or national borders.”
(Directive 2007/2/EC (26))

“[...]facilitate public access to spatial information across Europe”
(<https://inspire.ec.europa.eu/about-inspire/563> 10.08.17)



www.lgl-bw.de



Baden-Württemberg
LANDESAMT FÜR GEONFORMATION UND LANDENTWICKLUNG

Folie 12.

Interdisciplinary usage of INSPIRE

Where can I buy groceries?

What about climate, noise ...?

Is there a school nearby?

What is the **shortest route** to ...

...the railway station?

... the hospital?

...?

And on weekends?

Are there any cafes, bars, restaurants?

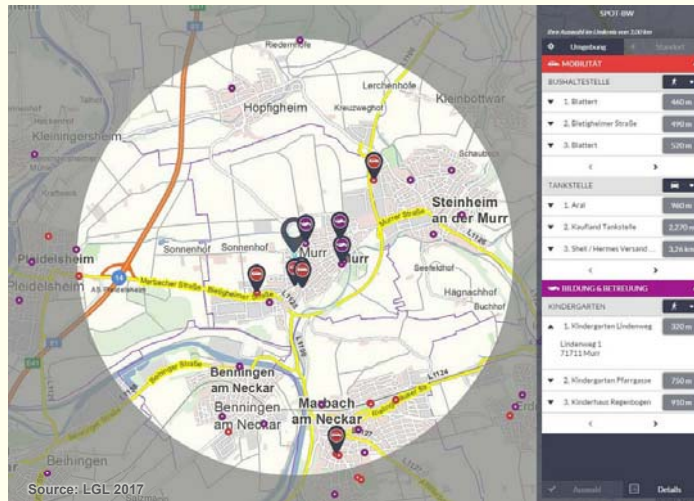


Folie 13.



Interdisciplinary usage of INSPIRE

About Spot-BW

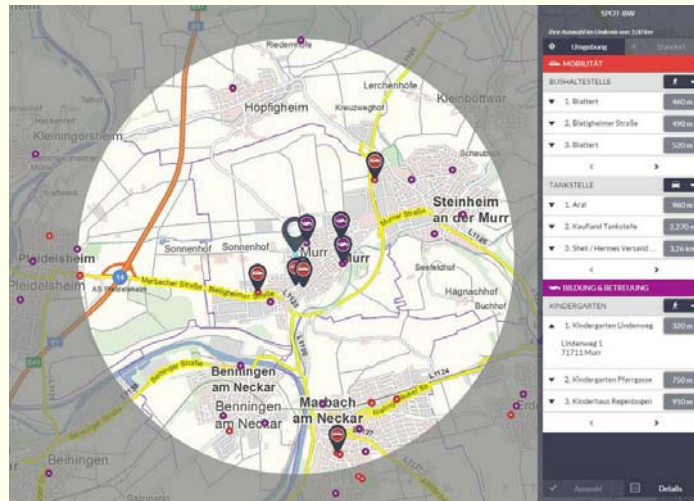


Folie 14.



Interdisciplinary usage of INSPIRE

How does it work ?



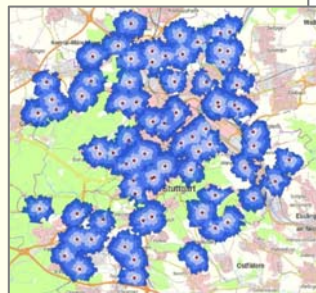
Folie 15.



Interdisciplinary usage of INSPIRE

Conclusion

- ❖ Different data sources
- ❖ Added-value through data enrichment
- ❖ Access via standardised services
- ❖ User-friendly access to the spatial infrastructure



Folie 16.



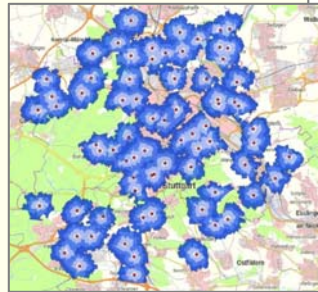
Conclusion

- ❖ Different data sources
- ❖ Added-value through data enrichment
- ❖ Access via standardised services
- ❖ User-friendly access to the spatial infrastructure

Applying INSPIRE is about providing the link between spatial data so they can be put to practical use.



Folie 17.



SPOT-BW


Baden-Württemberg

LANDESAMT FÜR GEOINFORMATION UND LANDENTWICKLUNG

Thank you for your attention!



Folie 18.


Baden-Württemberg

LANDESAMT FÜR GEOINFORMATION UND LANDENTWICKLUNG



Geoinformation und Landentwicklung

