

Digital transformation and the future of SDIs

Developments in ELISE
Francesco Pignatelli
(European Commission, DG JRC)

Interactive Workshop

INSPIRE Conference, Antwerp
21 September 2018, 9.00 – 10.30

Governments have to deal with old and new challenges



N°1 – Cross-border public services are not yet fully available, interoperable and digitised



N°2 – Increased citizens' expectations on public service provision and security of their information



N°3 – Emerging regulatory gaps because legislations can't keep pace with technology evolutions, new services and products



N°4 – New engagement models – increased citizen participation and cooperation with private sector to drive innovation



N°5 – Increased need of information sharing for cross-sector and cross-border public services and with businesses



N°6 – Upskill citizens, businesses and administrations' capabilities on new technologies

What is “Digital Government” in this context?

Digital Government refers to the use of **digital technologies**, as an integrated part of governments’ **modernisation** strategies, to create **public value**.

It relies on a digital government **ecosystem** comprising government actors, non-governmental organisations, businesses, citizens’ associations and individuals which supports the production of and access to **data**, services and content through interactions with the government.

Source: OECD, 2014

Location data and INSPIRE have a key role to play

The European Commission and Digital Government

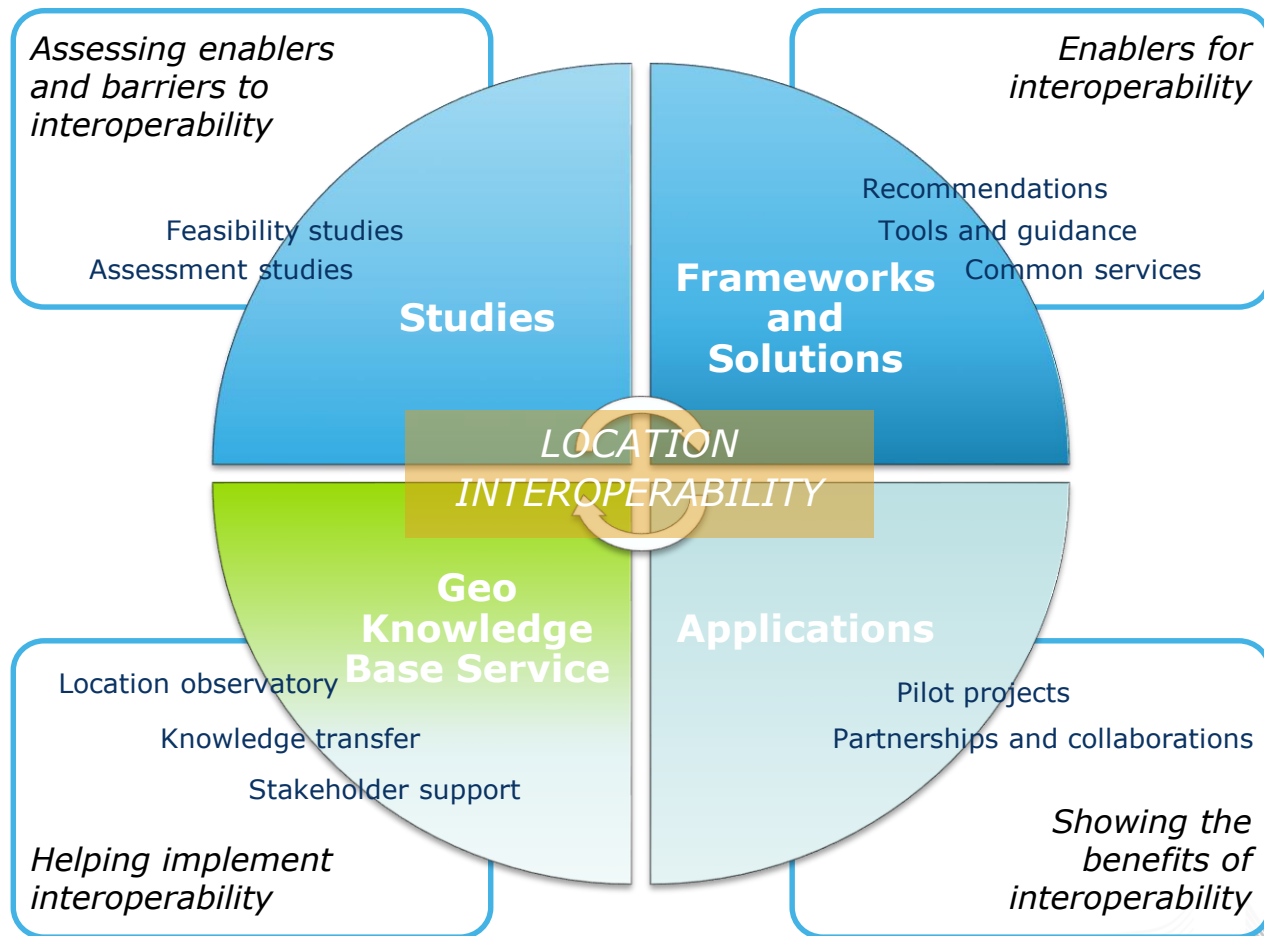
- Digital Single Market Strategy and Mid-term review (2017)228
- EU eGovernment Action Plan 2016-20 “Accelerating digital Transformation of Government” (2016)179
- Interoperability Solutions for Public Administrations, Citizens and Businesses (ISA and ISA² Programmes)
- European Interoperability Framework (2017)134
- Single Digital Gateway (2017)256
- CEF Digital Building Blocks
- Support to MS on monitoring implementation of the Tallinn Declaration (October 2017)
- Digital Europe Programme (2018)3211
- Revision of the PSI Directive (2013/37/EU)
- General Data Protection Regulation (2016)679
- 4 • INSPIRE Directive (2007/2/EC)

The “European Location Interoperability Solutions for e-Government” (ELISE) action is part of the ISA² Programme

It also supports many of these other EC initiatives on Digital Government

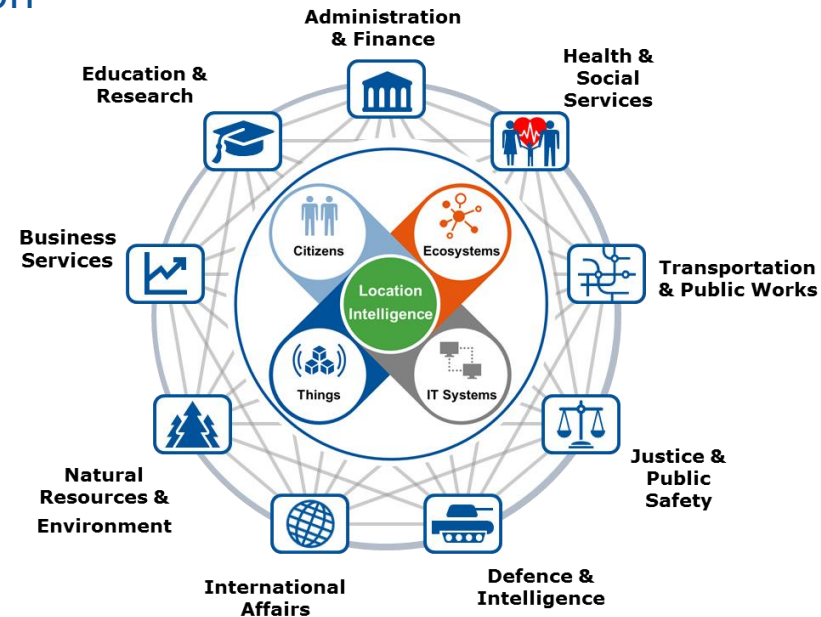
ELISE is enabling
DIGITAL GOVERNMENT
through
LOCATION INTELLIGENCE

What is ELISE doing?



ELISE achievements in Digital Government context

- Better understanding of the role of location information
 - Digital transformation study
 - Digital platforms study
 - Technology studies – APIs, blockchain
 - Data value study
 - INSPIRE data licensing study
 - Gazetteer feasibility study and survey
 - GDPR assessment
- Enabling guidance, tools and support
 - Blueprint and associated guidance
 - ARE³NA platform for INSPIRE
 - Interoperability tools, e.g. Re³gistry, validator
 - Events and webinars on key topics
- Improved digital government ecosystems
 - Transportation pilot – road safety ecosystem
 - Energy pilot – buildings energy efficiency ecosystem
 - Thematic viewer for the INSPIRE geoportal – INSPIRE data ecosystem



ELISE foreseen activities in Digital Government context

- Better understanding of the role of location information
 - Building on the digital platforms study: SDI as a digital platform
 - Building on the data value study: analysis of cross border dataflows and dataflows between public administrations and businesses
 - Evaluation of the impacts of AI: The role of AI in the geospatial domain; applications and potential interoperability issues
 - Location interoperability observatory
- Enabling guidance, tools and support
 - Maintenance of Blueprint and associated guidance, including location data privacy
 - Maintenance of ARE³NA platform and interoperability tools
 - Enhanced knowledge transfer support
 - ICT assessments of new legislation
 - Evaluation of EU gazetteer solutions
- Improved digital government ecosystems
 - Transportation: Standards for multi-modal travel information systems
 - Energy efficiency of buildings: Further use cases on the overall process
 - API ecosystems: Strategies and approaches for successful implementation

Want to know more?

ELISE

European Location
Interoperability Solutions
for e-Government

Get started: [ELISE Action page](#)

Join and collaborate: [ELISE Community](#)

Stay tuned:  [@EULocation](#)



<http://inspire.ec.europa.eu/>

The ELISE action is undertaken with the support of [ISA²](#).

ISA² is a EUR 131 million programme of the European Commission which develops digital solutions that enable interoperable cross-border and cross-sector public services for the benefit of public administrations, businesses and citizens across the EU.

ISA² supports a large range of [actions](#) and [solutions](#). The ISA² solutions can be used free of charge and are open source when related to IT.

[ISA²](#) - IT solutions for less bureaucracy You click, we link. Follow us on [twitter](#).

<http://ec.europa.eu/isa>, ISA@ec.europa.eu