

PDOK Publieke
Dienstverlening
op de Kaart

Actuele geodata op één plek



www.pdok.nl

PDOK Publieke
Dienstverlening
op de Kaart

Dutch National GeoRegistry

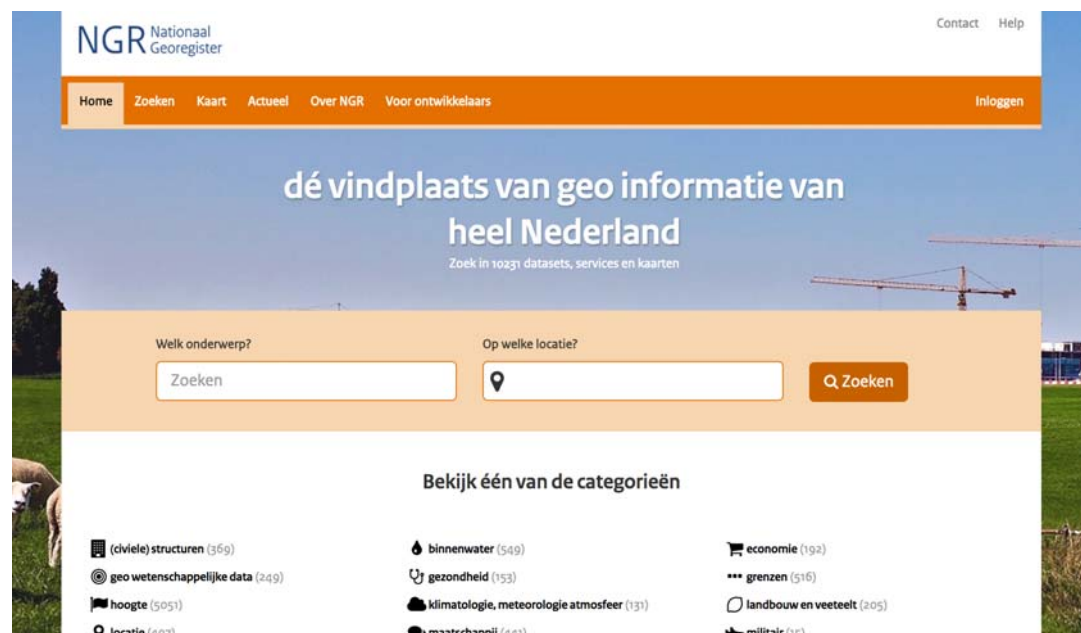
INSPIRE conference
September 2017, Strasbourg

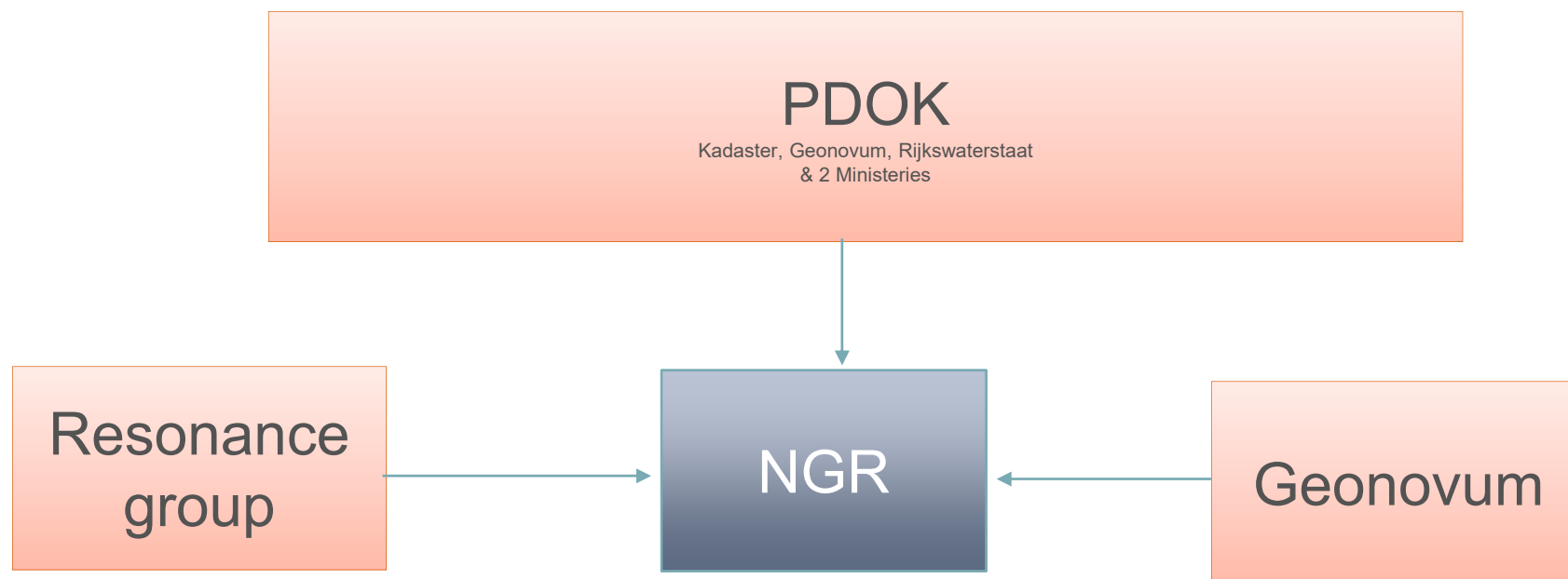
Nicolien Jongerius (Kadaster)
Ine de Visser (Geonovum)
Paul van Genuchten (GeoCat)

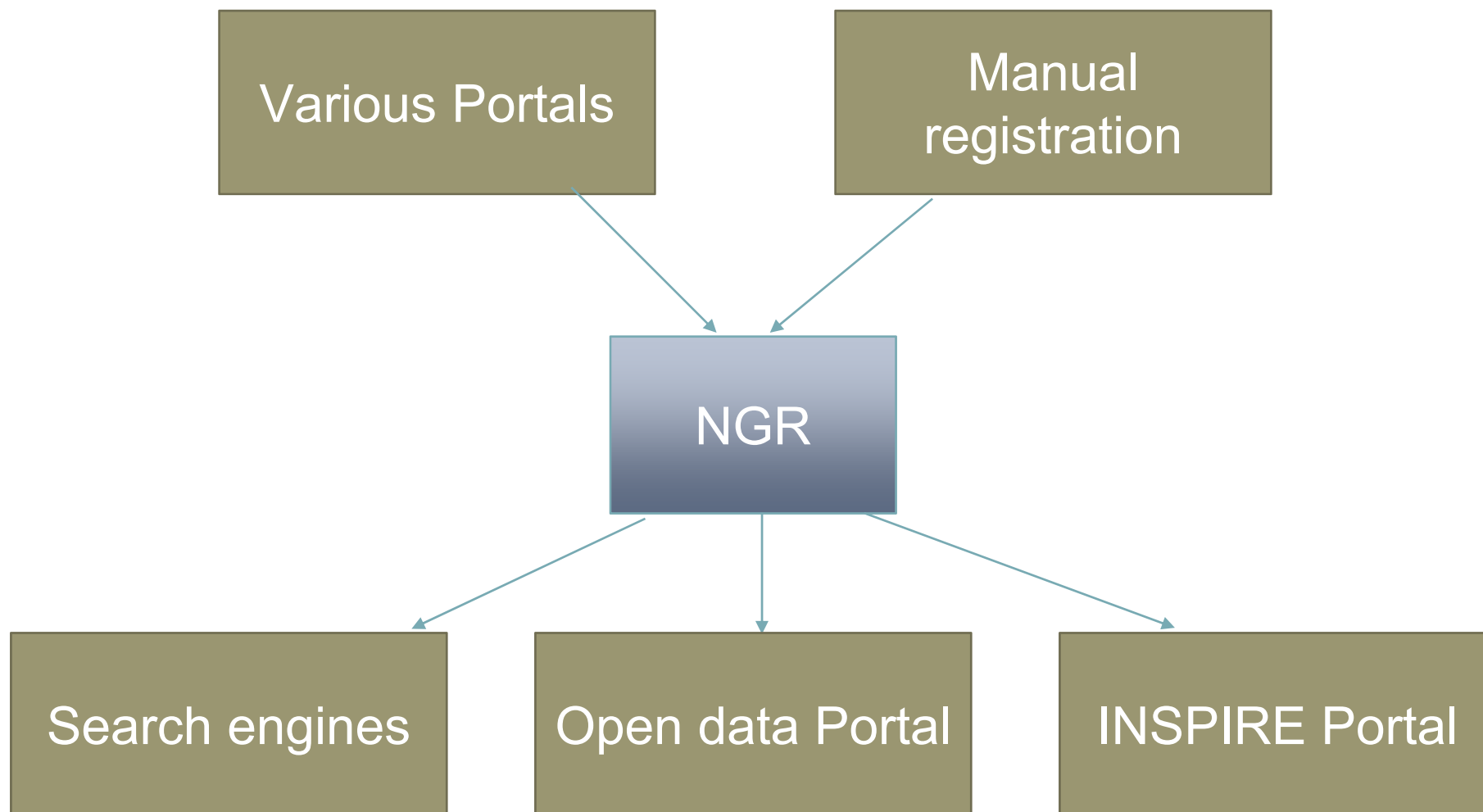
»National registry for geospatial datasets and services

»3rd version released start of 2017

»Based on GeoNetwork Opensource







- Quick Search
- Advanced search
- Editor
- Map viewer
- Metadata transformation
- Harvesting
- Configuration management
- WFS download wizard

CBS Aardgas- en Elek

Brontype: Service

Aardgas- en elektriciteitslevering t.b.v. de Nationale E

Beschrijving

Contact gegevens

Download

Het featuretype ' (aardgas_buurt_bedrijven_2014)' <https://geodata.nationaalgeoregister.nl/cbsenergie> over het [WFS protocol](#).

Kies een data formaat om te downloaden:

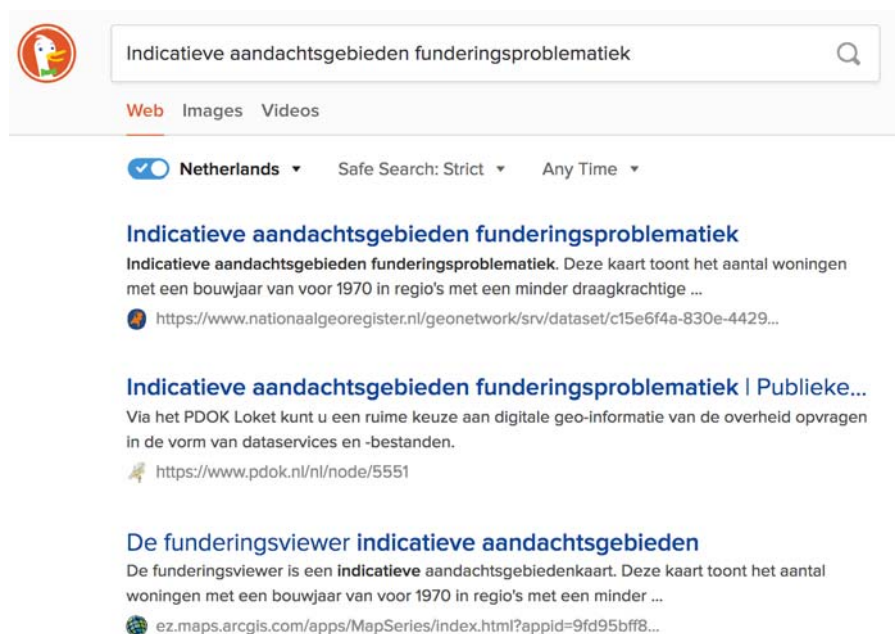
Download data ▾

application/gml+xml; version=3.2
application/json
application/vnd.google-earth.kml+xml
application/vnd.google-earth.kml+xml
csv
gml2
gml3
gml32

4)' is
nergie

- A design company designed a skin
- Early feedback from a resonance group
- Video's with usage instructions
- Basic editor with only required fields
- Extract metadata from linked service capabilities

- » GeoNetwork is not optimised for search engine spidering out of the box (sitemap, formatter)
- » schema.org/Dataset annotation in HTML markup



- » NGR uses the Are3na ISO-to-Geo-dcat-ap conversion to provide DCAT export capabilities
- » Re-use minted URI's at search engine optimisation
- » Looking for use cases, the open data portal currently does not support DCAT yet

- » Opening http services in a https website causes mixed content issue
- » Login over http is unsafe and denied by modern browsers
- » That's why we run the default website on http, but when users login they are redirected to https
- » All parts of Dutch government should implement https by the end of this year...
- » If all data providers are on https, NGR can also move to https

- »In SDI Web Clients like GeoNetwork it is quite common to open services from various domains (wms/wfs/csw/wps)
- »Browsers deny this as unsafe, unless the external domain provides a CORS header
- »A workaround is to proxy the outside traffic via the GeoNetwork server
- »This workaround is resource consuming and unsafe
- »Notify your data providers to activate the CORS header

»A schema profile plugin is a code-plugin for GeoNetwork that enables additional validation and extraction methods related to a certain localised metadata profile

»NGR introduces 2 dutch schema profile plugins, one for iso19115 (datasets) and one for iso19119 (services)

»We now have very specific display, form and validator behaviour for datasets and services

»Schema profile plugins are advertised at metadata101.org

Thank you

<http://nationaalgeoregister.nl>